

W3G630-IM07-H3 ebmpapst Datasheet

sales@fansco.com

www.fansco.com

Nominal data

Type	W3G630-IM07-H3	
Motor	M3G084-GF	
Phase		1~
Nominal voltage	VAC	230
Nominal voltage range	VAC	200 .. 277
Frequency	Hz	50/60
Method of obtaining data		ml
Speed (rpm)	min ⁻¹	900
Power consumption	W	390
Current draw	A	1.7
Max. back pressure	Pa	85
Max. back pressure	in. wg	0.34
Min. ambient temperature	°C	-25
Max. ambient temperature	°C	60

ml = Max. load · me = Max. efficiency · fa = Free air · cs = Customer specification · ce = Customer equipment
Subject to change

Data according to Commission Regulation (EU) 327/2011

		Actual	Req. 2015			
01 Overall efficiency η_{es}	%	43.3	31.1	09 Power consumption P_{ed}	kW	0.39
02 Measurement category		A		09 Air flow q_v	m ³ /h	6680
03 Efficiency category		Static		09 Pressure increase p_{fs}	Pa	83
04 Efficiency grade N		52.2	40	10 Speed (rpm) n	min ⁻¹	900
05 Variable speed drive		Yes		11 Specific ratio*		1.00

Data obtained at optimum efficiency level.

The ErP data is determined using a motor-impeller combination in a standardized measurement setup.

* Specific ratio = $1 + p_s / 100\,000\text{ Pa}$

LU-162268



Technical description

Weight	17.4 kg
Fan size	630 mm
Rotor surface	Painted black
Electronics housing material	Die-cast aluminum, painted black
Blade material	Press-fitted sheet steel blank, sprayed with PP plastic
Fan housing material	Sheet steel, galvanized and coated with black plastic (RAL 9005)
Guard grille material	Steel, coated with black plastic (RAL 9005)
Number of blades	5
Airflow direction	"V"
Direction of rotation	Counterclockwise, viewed toward rotor
Degree of protection	IP55; installation- and position-dependent
Insulation class	"F"
Moisture (F) / Environmental (H) protection class	H2
Max. permitted ambient temp. for motor (transport/storage)	+80 °C
Min. permitted ambient temp. for motor (transport/storage)	-40 °C
Installation position	Shaft horizontal or rotor on bottom; rotor on top on request
Condensation drainage holes	On rotor side
Mode	S1
Motor bearing	Ball bearing; (sealed)
Technical features	<ul style="list-style-type: none"> - Output 10 VDC, max. 10 mA - Operation and alarm display - Alarm relay - Integrated PID controller - Power limiter - Motor current limitation - PFC, active - RS-485 MODBUS-RTU - Soft start - Control input 0-10 VDC / PWM - Control interface with SELV potential safely disconnected from the mains - Thermal overload protection for electronics/motor - Line undervoltage / phase failure detection
EMC immunity to interference	According to EN 61000-6-2 (industrial environment)
EMC circuit feedback	According to EN 61000-3-2/3
EMC interference emission	According to EN 61000-6-3 (household environment)
Touch current according to IEC 60990 (measuring circuit Fig. 4, TN system)	<= 3.5 mA
Motor protection	Thermal overload protector (TOP) internally connected
With cable	Variable
Protection class	I (with customer connection of protective earth)
Conformity with standards	EN 60335-1; EN 61800-5-1; CE
Approval	C22.2 No.77 + CAN/CSA-E60730-1; UL 1004-7 + 60730

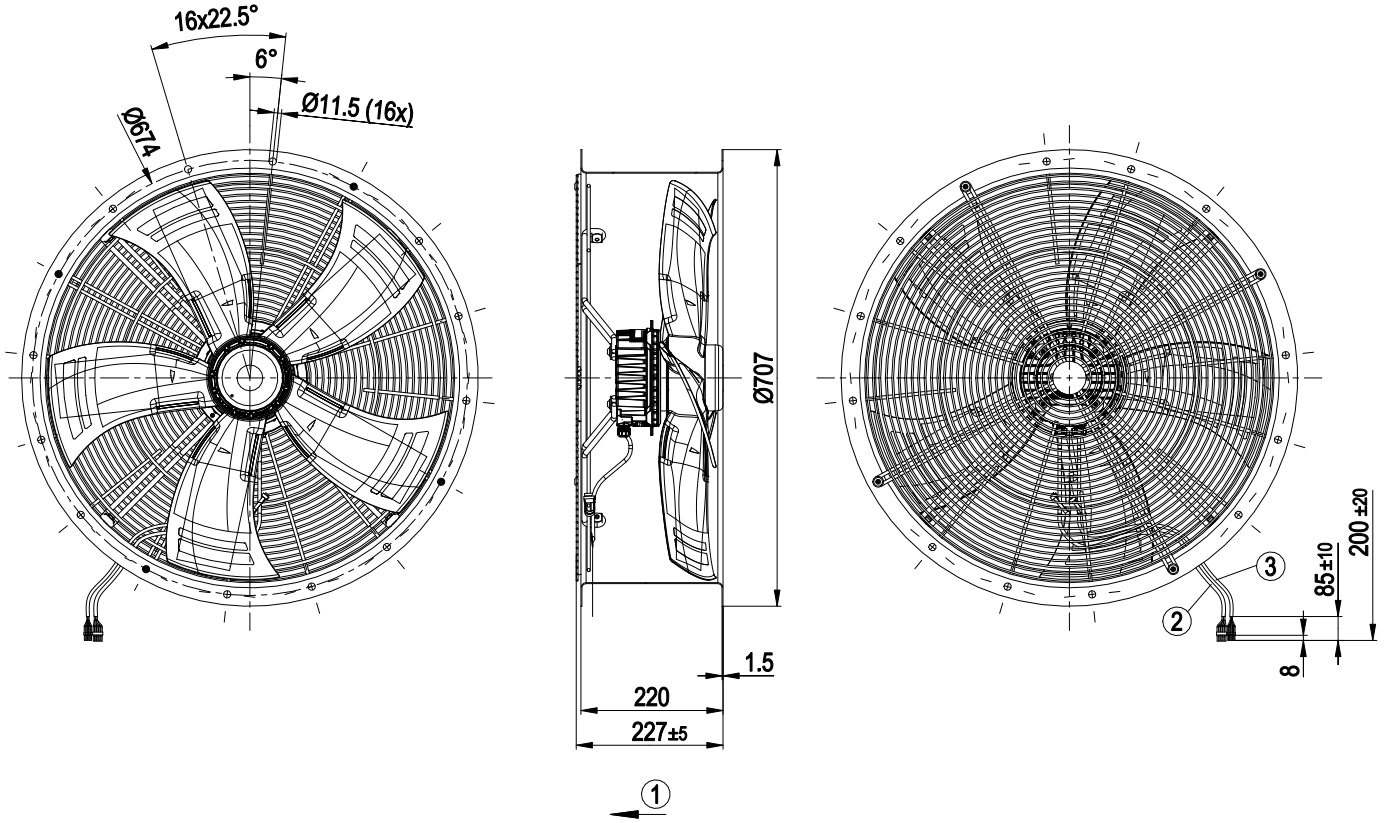
W3G630-IM07-H3

EC axial fan - HyBlade

sickle-shaped blades (S series)

Duct fan, Transformer fan

Product drawing



1	Airflow direction "V"
2	Cable PVC AWG18, 5x crimped ferrules
3	Cable PVC AWG22, 5x crimped ferrules

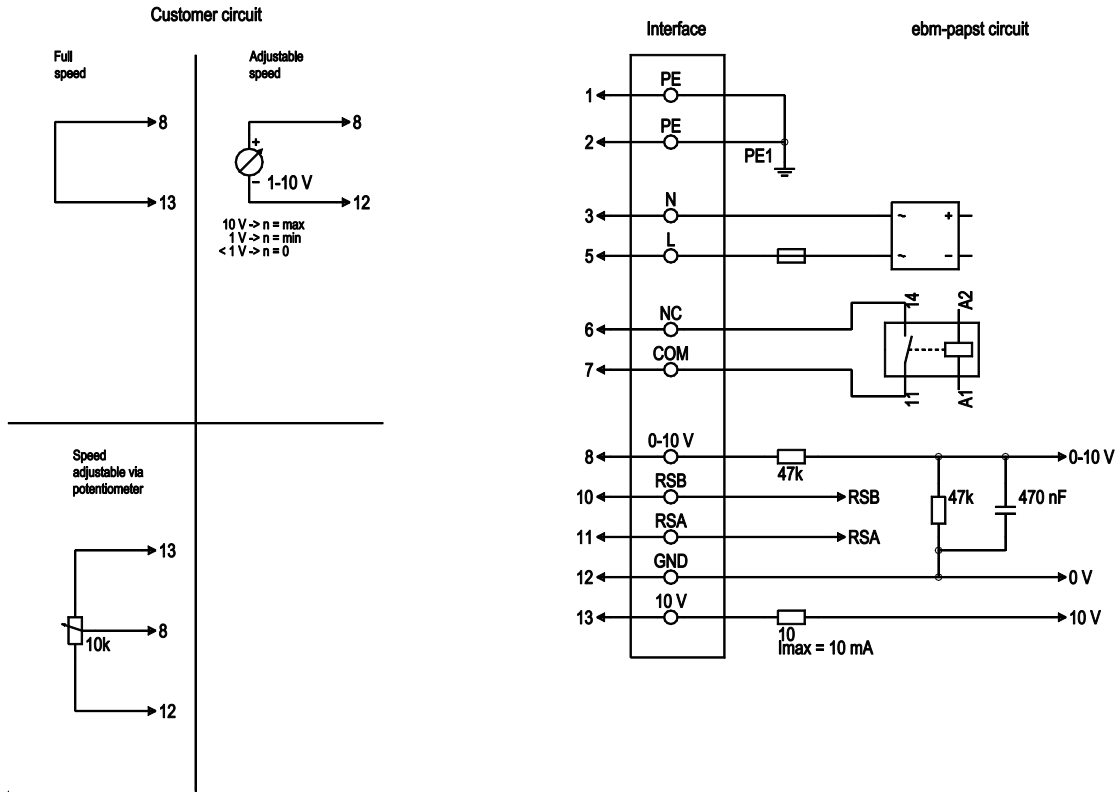


EC axial fan - HyBlade

sickle-shaped blades (S series)

Duct fan, Transformer fan

Connection diagram



No.	Conn.	Designation	Color	Function/assignment
1	1, 2	PE	green/yellow	Protective earth
1	3	N	blue	Power supply, neutral conductor, 50/60 Hz
1	5	L	black	Power supply, phase, 50/60 Hz
1	6	NC	white 1	Status relay, floating status contact; break for failure, contact rating 250 VAC / 2A (AC1) / min. 10 mA, basic insulation on supply side and reinforced insulation on control interface side
1	7	COM	white 2	Status relay, floating status contact; common connection, contact rating 250 VAC / 2A (AC1) / min. 10 mA, basic insulation on supply side and reinforced insulation on control interface side
2	8	0-10V	yellow	Analog input (set value); 0-10 V; Ri = 100 kΩ; adjustable curve
2	10	RSB	brown	RS485 interface for MODBUS, RSB
2	11	RSA	white	RS485 interface for MODBUS, RSA
2	12	GND	blue	Reference ground for control interface, SELV
2	13	+10V	red	Fixed voltage output 10 VDC, +10 V ±3%; max. 10 mA; short-circuit-proof; power supply for external devices (e.g. pot)

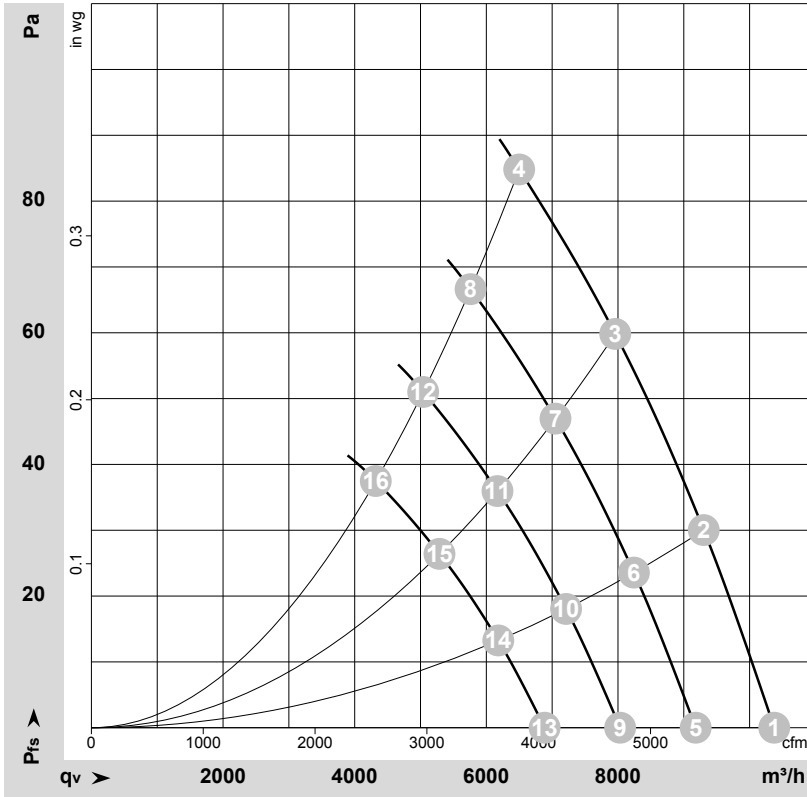


EC axial fan - HyBlade

sickle-shaped blades (S series)

Duct fan, Transformer fan

Curves: Air performance 50 Hz



$\rho = 1.174 \text{ kg/m}^3 \pm 2 \%$

Measurement: LU-162268-1

Air performance measured according to ISO 5801 installation category A. For detailed information on the measurement setup, contact ebmpapst. Intake sound level: Sound power level according to ISO 13347 / sound pressure level measured at 1 m distance from fan axis. The values given are valid under the specified measuring conditions and may vary due to conditions of installation. For deviations from the standard configuration, the parameters have to be checked on the installed unit.

Measured values

	U	f	n	P _{ed}	I	LpA _{in}	LwA _{in}	LwA _{out}	q _v	P _{fs}	q _v	P _{fs}
	V	Hz	min ⁻¹	W	A	dB(A)	dB(A)	dB(A)	m ³ /h	Pa	cfm	in. wg
1	230	50	900	258	1.15	60	66	65	10375	0	6105	0.00
2	230	50	900	311	1.38	60	66	64	9305	30	5475	0.12
3	230	50	900	357	1.57	59	65	64	7960	60	4685	0.24
4	230	50	900	390	1.70	61	68	67	6500	85	3825	0.34
5	230	50	800	178	0.80	57	63	62	9180	0	5405	0.00
6	230	50	800	217	0.96	57	63	61	8240	24	4850	0.10
7	230	50	800	248	1.09	56	62	61	7050	47	4150	0.19
8	230	50	800	276	1.21	58	65	64	5760	67	3390	0.27
9	230	50	700	120	0.54	53	60	59	8035	0	4730	0.00
10	230	50	700	145	0.64	54	59	58	7210	18	4245	0.07
11	230	50	700	166	0.73	52	59	57	6170	36	3630	0.14
12	230	50	700	185	0.81	54	61	60	5040	51	2965	0.20
13	230	50	600	75	0.34	50	56	55	6885	0	4050	0.00
14	230	50	600	91	0.40	50	55	54	6180	13	3640	0.05
15	230	50	600	105	0.46	48	55	53	5290	26	3110	0.10
16	230	50	600	116	0.51	51	57	57	4320	38	2545	0.15

U = Power supply · f = Frequency · n = Speed (rpm) · P_{ed} = Power consumption · I = Current draw · LpA_{in} = Sound pressure level intake side · LwA_{in} = Sound power level intake side
 LwA_{out} = Sound power level outlet side · q_v = Air flow · P_{fs} = Pressure increase

