

AC axial fan

blades with special design (K series)

with guard grille for short nozzle

S4D300-EC28-11 ebmpapst Datasheet

sales@fansco.com

www.fansco.com

Limited partnership · Headquarters Mulfingen

Amtsgericht (court of registration) Stuttgart · HRA 590344

General partner Elektrobau Mulfingen GmbH · Headquarters Mulfingen

Amtsgericht (court of registration) Stuttgart · HRB 590142

Nominal data

Type	S4D300-EC28-11				
Motor	M4D068-DF				
Phase		1~	1~	3~	3~
Nominal voltage	VAC	230	230	400	400
Wiring		Δ	Δ	Y	Y
Frequency	Hz	50	60	50	60
Method of obtaining data		fa	fa	fa	fa
Valid for approval/standard		CE	CE	CE	CE
Speed (rpm)	min ⁻¹	1390	1570	1390	1570
Power consumption	W	70	95	70	95
Current draw	A	0.33	0.33	0.19	0.19
Min. ambient temperature	°C	-25	-25	-25	-25
Max. ambient temperature	°C	65	65	65	65

ml = Max. load · me = Max. efficiency · fa = Free air · cs = Customer specification · ce = Customer equipment
Subject to change



AC axial fan

blades with special design (K series)
with guard grille for short nozzle

Technical description

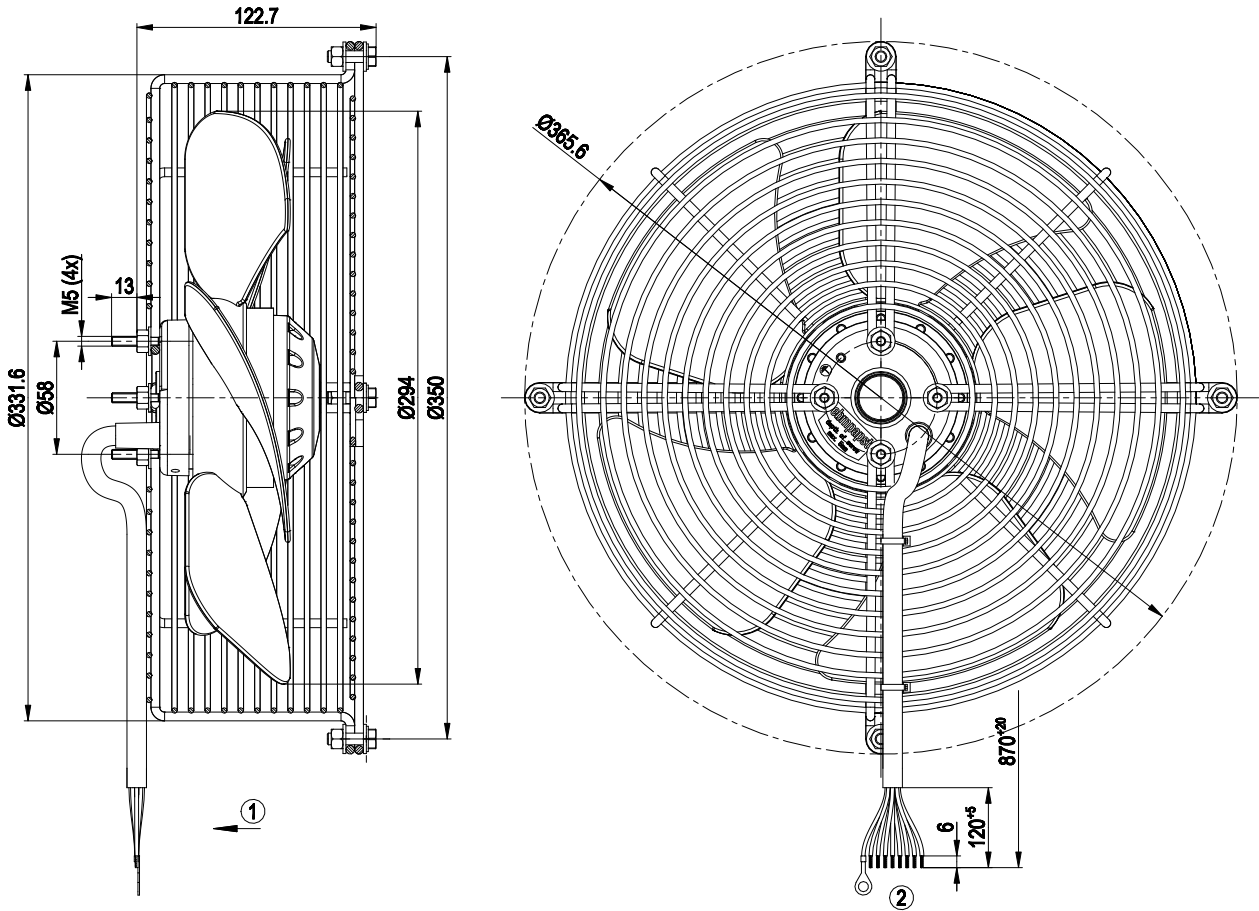
Weight	3.6 kg
Fan size	300 mm
Rotor surface	Painted black
Impeller material	PA plastic
Guard grille material	Steel, coated with black plastic (RAL 9005)
Number of blades	5
Airflow direction	"V"
Direction of rotation	Counterclockwise, viewed toward rotor
Degree of protection	IP44; installation- and position-dependent
Insulation class	"B"
Moisture (F) / Environmental (H) protection class	F2-2
Max. permitted ambient temp. for motor (transport/storage)	+ 80 °C
Min. permitted ambient temp. for motor (transport/storage)	- 40 °C
Installation position	Any
Condensation drainage holes	None
Mode	S1
Motor bearing	Ball bearing
Touch current according to IEC 60990 (measuring circuit Fig. 4, TN system)	< 0.75 mA
Motor protection	Thermal overload protector (TOP) with basic insulation
With cable	Axial
Protection class	I (with customer connection of protective earth)
Conformity with standards	EN 60335-1; CE



AC axial fan

blades with special design (K series)
with guard grille for short nozzle

Product drawing



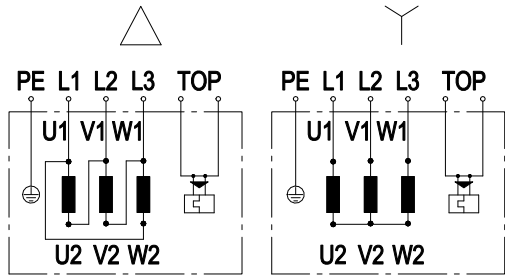
1	Direction of air flow "V"
2	Cable PVC 9x0.5 mm ² heat-stabilized, 8x splice and 1x ring terminal dia. 5.2 crimped



AC axial fan

blades with special design (K series)
with guard grille for short nozzle

Connection diagram



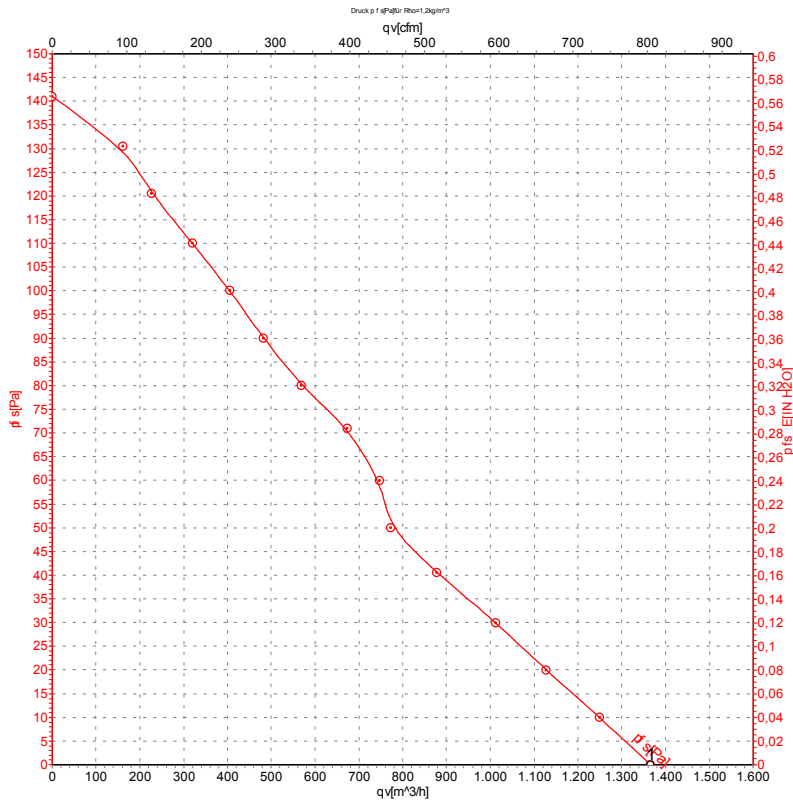
Δ	Delta connection	Y	Star connection	L1	black
L2	brown	L3	blue	U1	black
V1	brown	W1	blue	U2	orange
V2	red	W2	gray	TOP	2x white
PE	green/yellow				



AC axial fan

blades with special design (K series)
with guard grille for short nozzle

Curves: Air performance 50 Hz Δ



Measurement: LU-48663-1

Air performance measured according to ISO 5801 installation category A. For detailed information on the measurement setup, contact ebm-papst. Intake sound level: Sound power level according to ISO 13347 / sound pressure level measured at 1 m distance from fan axis. The values given are valid under the specified measuring conditions and may vary due to conditions of installation. For deviations from the standard configuration, the parameters have to be checked on the installed unit.

Measured values

	Wired	U	f	n	P _e	I	qv	qv	p _{fs}
		V	Hz	min ⁻¹	W	A	m ³ /h	CFM	inH2O
1	Y	400	50	1390	70	0.19	1365	805	0.00

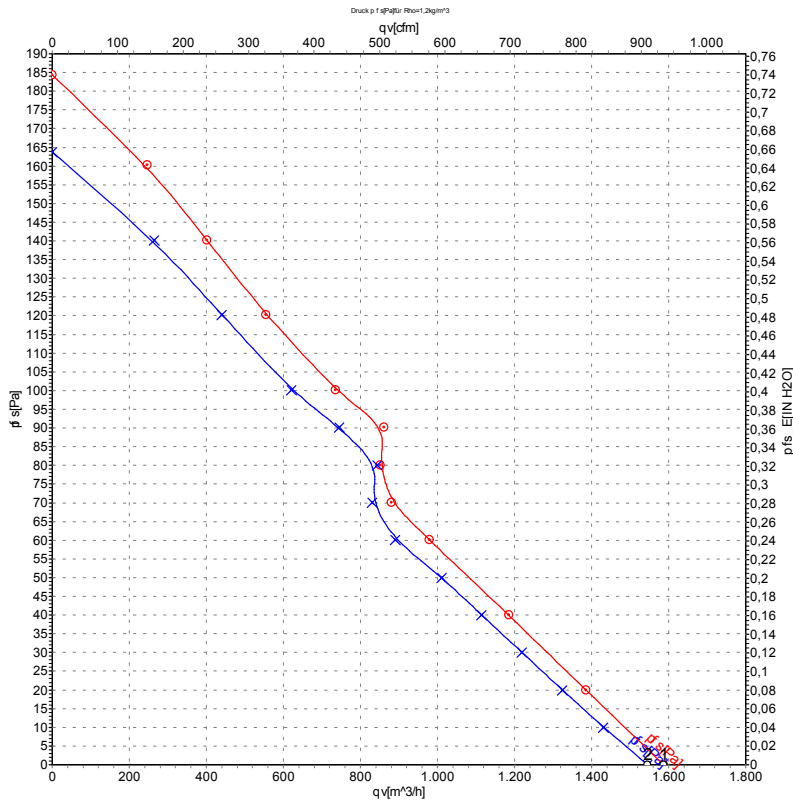
Wired = Wiring · U = Power supply · f = Frequency · n = Speed (rpm) · P_e = Power consumption · I = Current draw · qv = Air flow



AC axial fan

blades with special design (K series)
with guard grille for short nozzle

Curves: Air performance 60 Hz



Measurement: LU-48666-1
Measurement: LU-48665-1

Air performance measured according to ISO 5801 installation category A. For detailed information on the measurement setup, contact ebmpapst. Intake sound level: Sound power level according to ISO 13347 / sound pressure level measured at 1 m distance from fan axis. The values given are valid under the specified measuring conditions and may vary due to conditions of installation. For deviations from the standard configuration, the parameters have to be checked on the installed unit.

Measured values

	U	f	n	P _e	I	qv	qv	p _{fs}
	V	Hz	min ⁻¹	W	A	m ³ /h	CFM	inH ₂ O
1	460	60	1630	105	0.20	1590	935	0.00
2	400	60	1570	95	0.19	1545	910	0.00

U = Power supply · f = Frequency · n = Speed (rpm) · P_e = Power consumption · I = Current draw · qv = Air flow

