

R3G560-AG21-07

Emerson

# EC centrifugal fan

backward-curved, single-intake

R3G560-AG21-07 ebmpapst Datasheet

sales@fansco.com

www.fansco.com

Limited partnership · Headquarters Muldingen

Amtsgericht (court of registration) Stuttgart · HRA 590344

General partner Elektrobau Muldingen GmbH · Headquarters Muldingen

Amtsgericht (court of registration) Stuttgart · HRB 590142



## Nominal data

Type	R3G560-AG21-07	
Motor	M3G150-FF	
Phase		3~
Nominal voltage	VAC	400
Nominal voltage range	VAC	380 .. 480
Frequency	Hz	50/60
Method of obtaining data		ml
Speed (rpm)	min <sup>-1</sup>	1350
Power consumption	W	2160
Current draw	A	3.3
Min. ambient temperature	°C	-25
Max. ambient temperature	°C	65

ml = Max. load · me = Max. efficiency · fa = Free air · cs = Customer specification · ce = Customer equipment  
Subject to change

## Data according to ErP Directive

		Actual	Req. 2015			
01 Overall efficiency $\eta_{es}$	%	61	55	09 Power consumption $P_{ed}$	kW	2.17
02 Measurement category		A		09 Air flow $q_v$	m <sup>3</sup> /h	7805
03 Efficiency category		Static		09 Pressure increase $p_{fs}$	Pa	574
04 Efficiency grade N		68	62	10 Speed (rpm) n	min <sup>-1</sup>	1345
05 Variable speed drive		Yes		11 Specific ratio*		1.01

Data obtained at optimum efficiency level.

The ErP data is determined using a motor-impeller combination in a standardized measurement setup.

\* Specific ratio =  $1 + p_{fs} / 100\,000\text{ Pa}$

LU-121119



R3G560-AG21-07

Emerson

# EC centrifugal fan

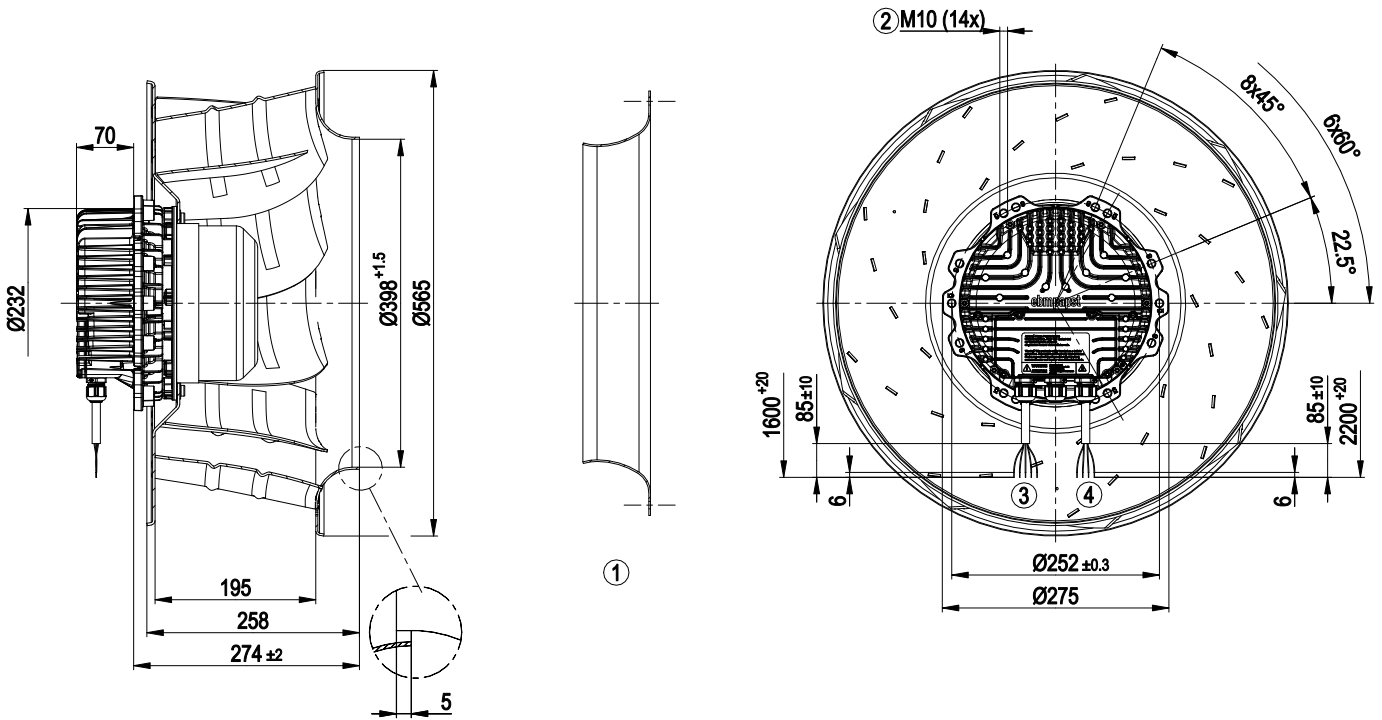
backward-curved, single-intake

## Technical description

<b>Weight</b>	24.6 kg
<b>Fan size</b>	560 mm
<b>Rotor surface</b>	Painted black
<b>Electronics housing material</b>	Die-cast aluminum
<b>Impeller material</b>	Sheet aluminum
<b>Number of blades</b>	9
<b>Direction of rotation</b>	Clockwise, viewed toward rotor
<b>Degree of protection</b>	IP55
<b>Insulation class</b>	"F"
<b>Moisture (F) / Environmental (H) protection class</b>	F4-1
<b>Max. permitted ambient temp. for motor (transport/storage)</b>	+80 °C
<b>Min. permitted ambient temp. for motor (transport/storage)</b>	-40 °C
<b>Installation position</b>	Shaft horizontal or rotor on bottom
<b>Condensation drainage holes</b>	On rotor side
<b>Mode</b>	S1
<b>Motor bearing</b>	Ball bearing
<b>Technical features</b>	<ul style="list-style-type: none"> <li>- Output 10 VDC, max. 10 mA</li> <li>- Output 20 VDC, max. 50 mA</li> <li>- Output for slave 0-10 V</li> <li>- Input for sensor 0-10 V or 4-20 mA</li> <li>- External 24 V input (parameter setting)</li> <li>- External release input</li> <li>- Alarm relay</li> <li>- Integrated PID controller</li> <li>- Power limiter</li> <li>- Motor current limitation</li> <li>- PFC, passive</li> <li>- RS-485 MODBUS-RTU</li> <li>- Soft start</li> <li>- EEPROM write cycles: 100,000 maximum</li> <li>- Control input 0-10 VDC / PWM</li> <li>- Control interface with SELV potential safely disconnected from the mains</li> <li>- Thermal overload protection for electronics/motor</li> <li>- Line undervoltage / phase failure detection</li> </ul>
<b>EMC immunity to interference</b>	According to EN 61000-6-2 (industrial environment)
<b>EMC interference emission</b>	According to EN 61000-6-3 (household environment)
<b>Touch current according to IEC 60990 (measuring circuit Fig. 4, TN system)</b>	<= 3.5 mA
<b>Motor protection</b>	Reverse polarity and locked-rotor protection
<b>With cable</b>	Lateral
<b>Protection class</b>	I (with customer connection of protective earth)
<b>Conformity with standards</b>	EN 61800-5-1; CE
<b>Approval</b>	C22.2 No.77 + CAN/CSA-E60730-1; EAC; UL 1004-7 + 60730



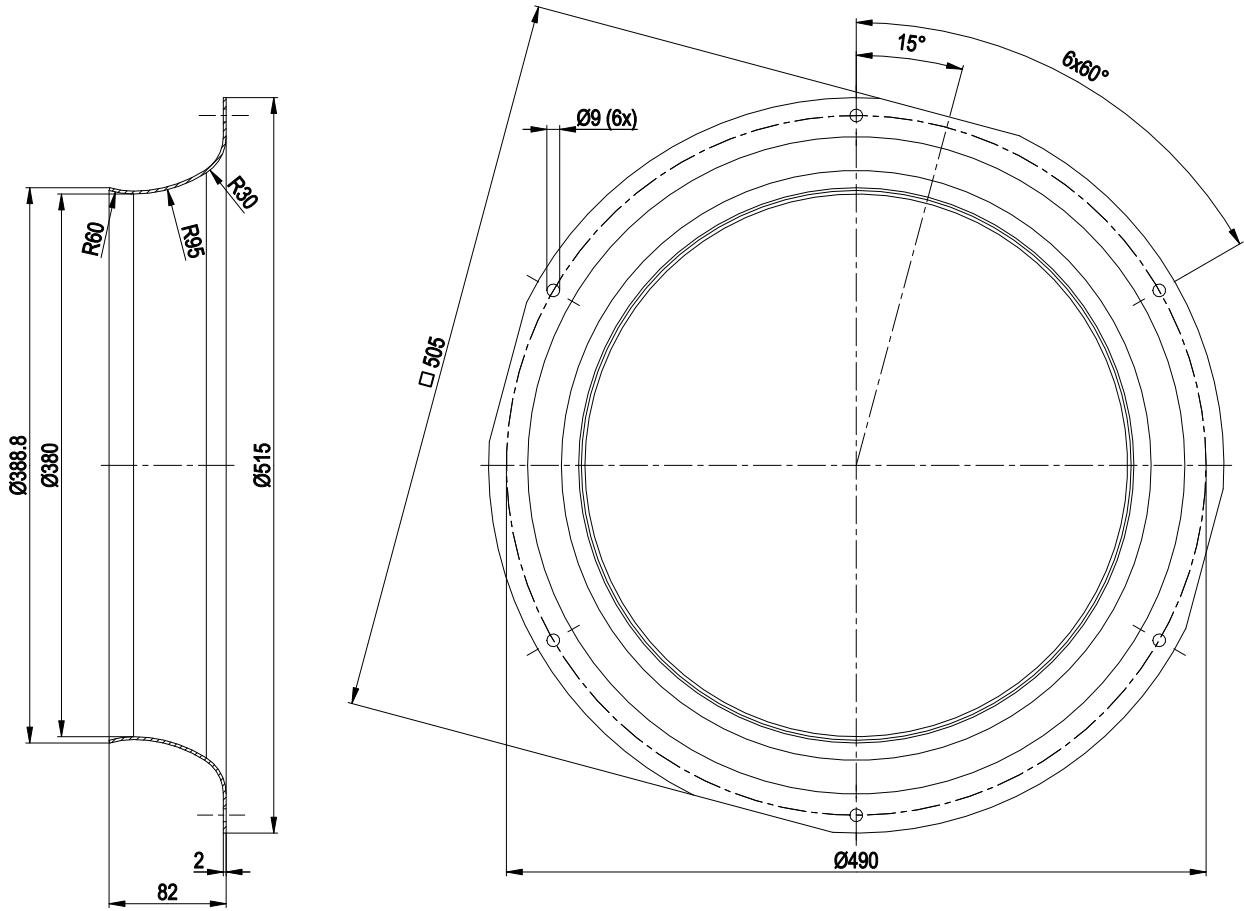
Product drawing



1	Accessory part: inlet ring 63071-2-4013 not included in scope of delivery.
2	Max. clearance for screw 25 mm
3	Cable PVC AWG18, 5x crimped ferrules
4	Cable PVC AWG20, 4x crimped ferrules

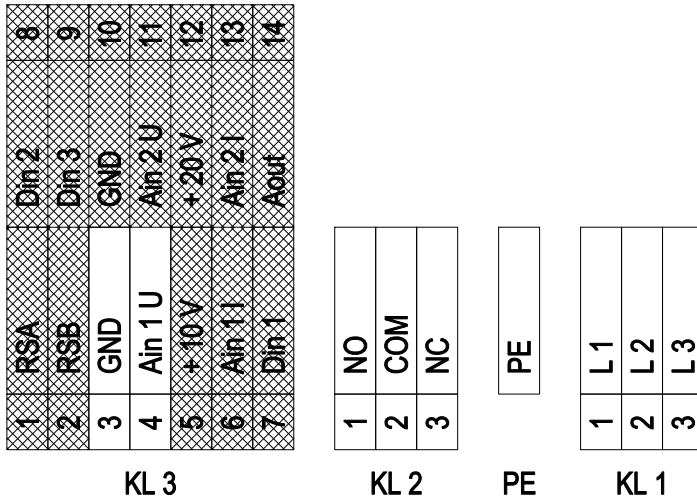


## Accessory part



- inlet ring 63071-2-4013 not included in scope of delivery

## Connection diagram



shaded gray => not brought out via leads

No.	Conn.	Designation	Color	Function/assignment
1	KL1	L1	black	Supply connection, power supply 3-phase 380-480 VAC, 50/60 Hz
1	KL1	L2	black	Supply connection, power supply 3-phase 380-480 VAC, 50/60 Hz
1	KL1	L3	black	Supply connection, power supply 3-phase 380-480 VAC, 50/60 Hz
1	PE	PE	green/yellow	Ground connection, PE connection
2	KL2	NO	orange	Status relay, floating status contact, make for failure
2	KL2	COM	black	Status relay, floating status contact; changeover contact; common connection; contact rating 250 VAC / max. 2 A (AC1) / min. 10 mA
2	KL2	NC	yellow	Status relay, floating status contact, break for failure
	KL3	RSA		Bus connection RS485, RSA, MODBUS RTU
	KL3	RSB		Bus connection RS485, RSB, MODBUS RTU
2	KL3	GND	blue	Reference ground for control interface
2	KL3	Ain1 U	red	Analog input 1 (set value), 0-10 V, Ri = 100 kΩ, adjustable curves, only usable as alternative to input Ain1I
	KL3	+ 10 V		Fixed voltage output 10 VDC, +10 V ±3%; max. 10 mA; short-circuit-proof; power supply for external devices (e.g. pot)
	KL3	Ain1 I		Analog input 1 (set value), 4-20 mA, Ri = 100 Ω, adjustable curves, only usable as alternative to input Ain1U
	KL3	Din1		Digital input 1: enable electronics, enable: pin open or applied voltage 5...50 VDC; disable: bridge to GND or applied voltage < 1 VDC; reset function: triggers software reset after a level change to < 1 V
	KL3	Din2		Digital input 2: Switching parameter sets 1/2; according to EEPROM setting, the valid or used parameter set can be selected via bus or via digital input DIN2. Parameter set 1: pin open or applied voltage 5-50 VDC; parameter set 2: bridge to GND or applied voltage < 1 VDC
	KL3	Din3		Digital input 3: according to EEPROM setting, the integrated controller's direction of action can be selected as normal/inverse via bus or digital input; normal: pin open or applied voltage 5-50 VDC inverse: bridge to GND or applied voltage < 1 VDC
	KL3	Ain2 U		Analog input 2, measured value 0-10 V, Ri = 100 kΩ, adjustable curve, only usable as alternative to input Ain2I
	KL3	+ 20 V		Fixed voltage output 20 VDC, 20 V +25/-10%, max. 50 mA, short-circuit-proof power supply for external devices (e.g. sensors)
	KL3	Ain2 I		Analog input 2, measured value: 4-20 mA, Ri = 100 Ω, adjustable curve, only usable as alternative to input Ain2U



R3G560-AG21-07

Emerson

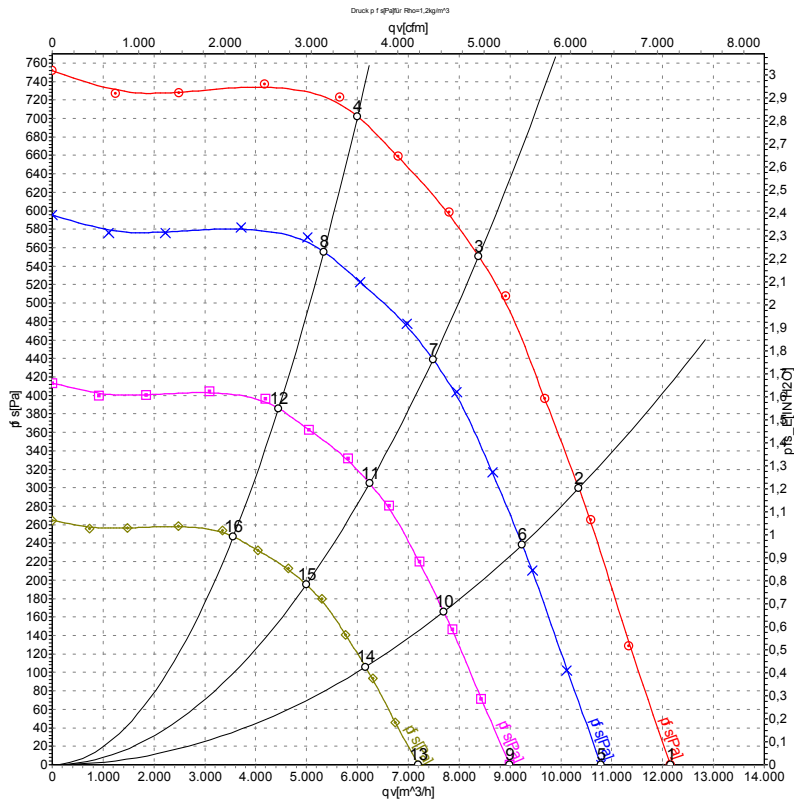
# EC centrifugal fan

backward-curved, single-intake

No.	Conn.	Designation	Color	Function/assignment
	KL3	Aout		Analog output 0-10 V, max. 5 mA, output of current motor modulation level / of the current motor speed. Adjustable curve.



## Curves: Air performance 50 Hz



Measurement: LU-121119-1

Air performance measured according to ISO 5801 installation category A. For detailed information on the measurement setup, contact ebmpapst. Intake sound level: Sound power level according to ISO 13347 / sound pressure level measured at 1 m distance from fan axis. The values given are valid under the specified measuring conditions and may vary due to conditions of installation. For deviations from the standard configuration, the parameters have to be checked on the installed unit.

## Measured values

	U	f	n	P <sub>ed</sub>	I	Lp <sub>Ain</sub>	Lw <sub>Ain</sub>	Lw <sub>Aout</sub>	qv	P <sub>fs</sub>	qv	P <sub>fs</sub>
	V	Hz	min <sup>-1</sup>	W	A	dB(A)	dB(A)	dB(A)	m <sup>3</sup> /h	Pa	CFM	inH2O
1	400	50	1350	1389	2.13	76	83	90	12150	0	7150	0.00
2	400	50	1350	1863	2.84	73	80	87	10350	300	6090	1.20
3	400	50	1350	2160	3.30	72	79	85	8385	550	4935	2.21
4	400	50	1350	2050	3.13	72	80	86	6000	700	3535	2.81
5	400	50	1200	974	1.49	73	80	87	10790	0	6350	0.00
6	400	50	1200	1323	2.02	71	78	85	9240	239	5435	0.96
7	400	50	1200	1536	2.35	69	77	83	7485	439	4405	1.76
8	400	50	1200	1443	2.20	70	78	83	5340	556	3140	2.23
9	400	50	1000	563	0.86	69	76	83	8995	0	5295	0.00
10	400	50	1000	766	1.17	67	74	81	7700	166	4530	0.67
11	400	50	1000	889	1.36	65	73	79	6240	305	3670	1.22
12	400	50	1000	835	1.27	66	74	79	4450	386	2620	1.55
13	400	50	800	288	0.44	64	71	78	7195	0	4235	0.00
14	400	50	800	392	0.60	62	69	76	6160	106	3625	0.43
15	400	50	800	455	0.70	60	68	74	4990	195	2940	0.78
16	400	50	800	427	0.65	61	69	75	3560	247	2095	0.99

U = Power supply · f = Frequency · n = Speed (rpm) · P<sub>ed</sub> = Power consumption · I = Current draw · Lp<sub>Ain</sub> = Sound pressure level intake side · Lw<sub>Ain</sub> = Sound power level intake side  
 Lw<sub>Aout</sub> = Sound power level outlet side · qv = Air flow · p<sub>fs</sub> = Pressure increase

