

R3G500-AH32-01 ebmpapst Datasheet

sales@fansco.com

www.fansco.com

## Nominal data

Type	R3G500-AH32-01	
Motor	M3G112-GA	
Phase		3~
Nominal voltage	VAC	400
Nominal voltage range	VAC	380 .. 480
Frequency	Hz	50/60
Method of obtaining data		ml
Speed (rpm)	min <sup>-1</sup>	1330
Power consumption	W	1050
Current draw	A	1.7
Min. ambient temperature	°C	-25
Max. ambient temperature	°C	50

ml = Max. load · me = Max. efficiency · fa = Free air · cs = Customer specification · ce = Customer equipment  
Subject to change

## Data according to ErP Directive

		Actual	Req. 2015			
01 Overall efficiency $\eta_{es}$	%	60.4	51.7	09 Power consumption $P_{ed}$	kW	1.04
02 Measurement category		A		09 Air flow $q_v$	m <sup>3</sup> /h	4805
03 Efficiency category		Static		09 Pressure increase $p_{fs}$	Pa	434
04 Efficiency grade N		70.7	62	10 Speed (rpm) n	min <sup>-1</sup>	1340
05 Variable speed drive		Yes		11 Specific ratio*		1.00

Data obtained at optimum efficiency level.

The ErP data is determined using a motor-impeller combination in a standardized measurement setup.

\* Specific ratio =  $1 + p_{fs} / 100\,000\text{ Pa}$

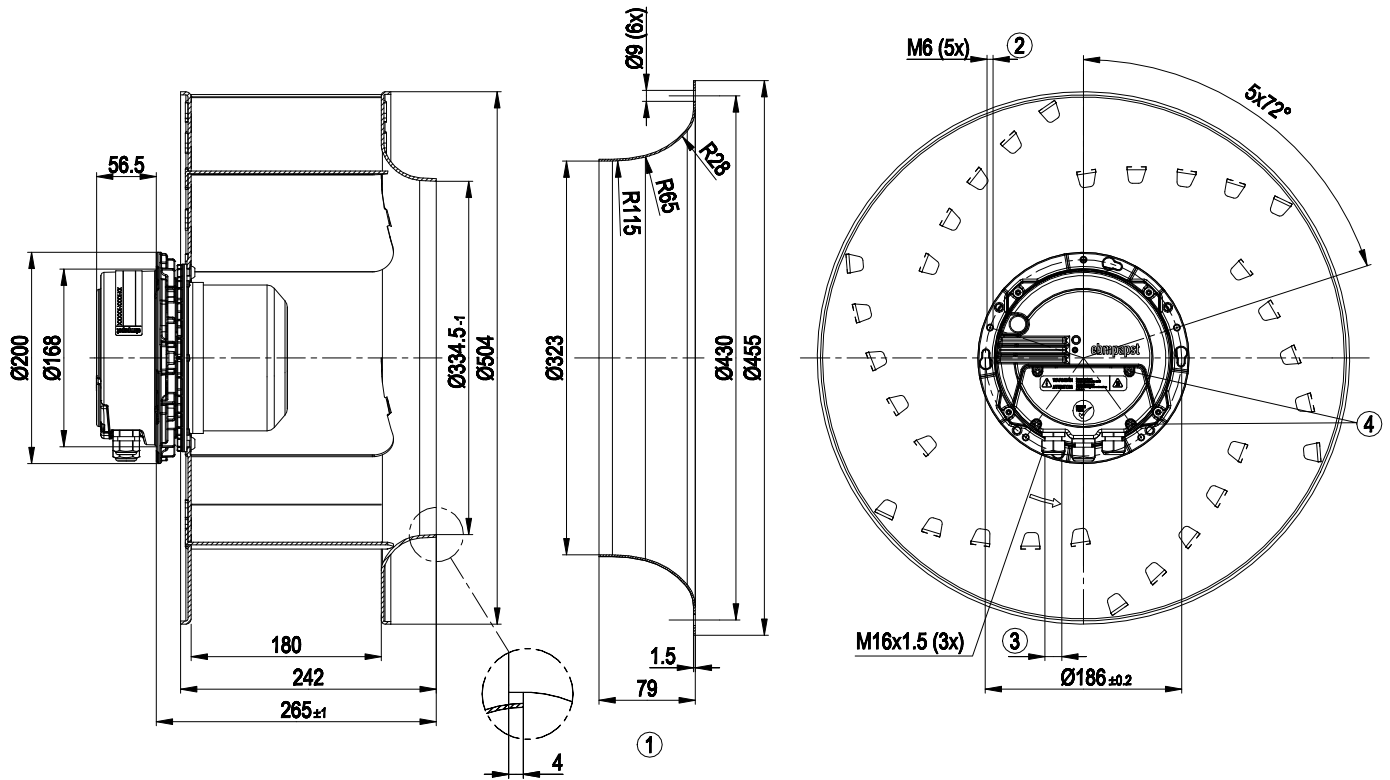
LU-107822



## Technical description

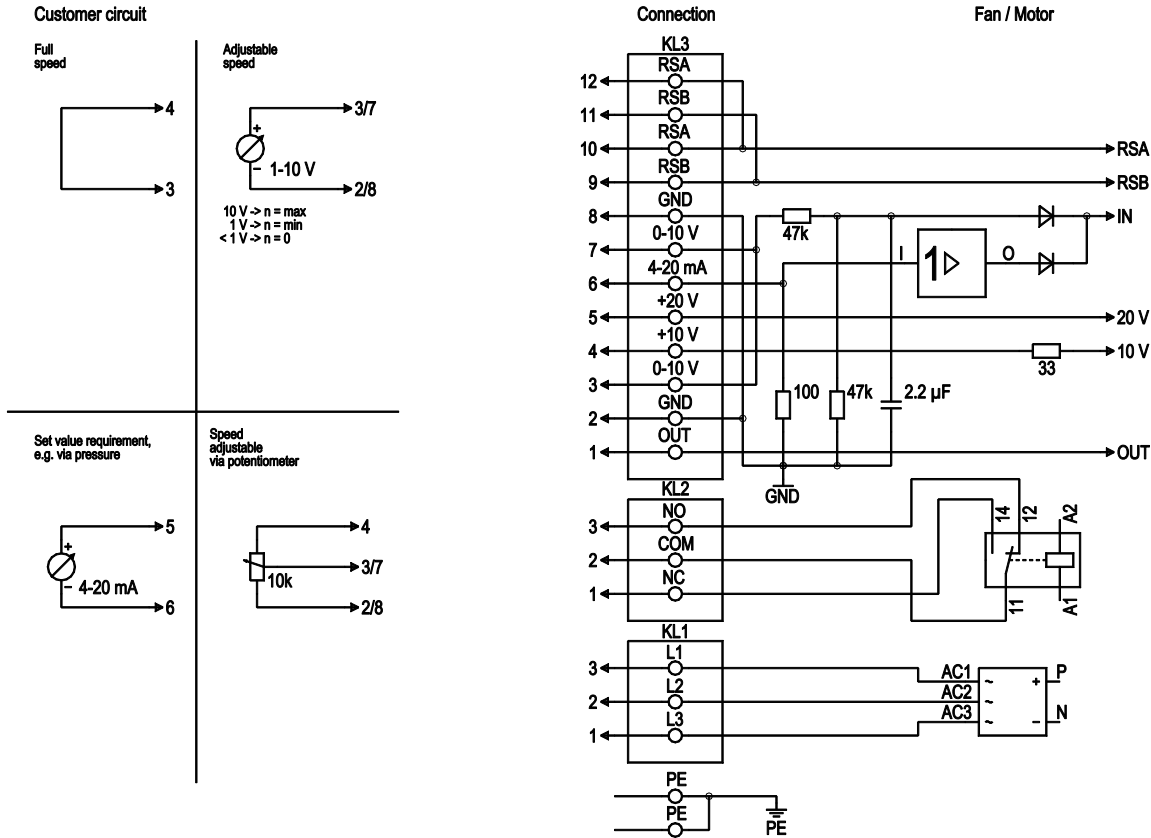
Weight	12.5 kg
Fan size	500 mm
Rotor surface	Painted black
Electronics housing material	Die-cast aluminum
Impeller material	Sheet aluminum
Number of blades	6
Direction of rotation	Clockwise, viewed toward rotor
Degree of protection	IP54
Insulation class	"B"
Moisture (F) / Environmental (H) protection class	F4-1
Max. permitted ambient temp. for motor (transport/storage)	+ 80 °C
Min. permitted ambient temp. for motor (transport/storage)	- 40 °C
Installation position	Shaft horizontal
Condensation drainage holes	None
Mode	S1
Motor bearing	Ball bearing
Technical features	<ul style="list-style-type: none"> <li>- Output 10 VDC, max. 10 mA</li> <li>- Output 20 VDC, max. 50 mA</li> <li>- Output for slave 0-10 V</li> <li>- Input for sensor 0-10 V or 4-20 mA</li> <li>- Alarm relay</li> <li>- Integrated PID controller</li> <li>- Motor current limitation</li> <li>- PFC, passive</li> <li>- RS-485 ebmBUS</li> <li>- Soft start</li> <li>- Control input 0-10 VDC / PWM</li> <li>- Control interface with SELV potential safely disconnected from the mains</li> <li>- Thermal overload protection for electronics/motor</li> <li>- Line undervoltage / phase failure detection</li> </ul>
EMC immunity to interference	According to EN 61000-6-2 (industrial environment)
EMC circuit feedback	According to EN 61000-3-2/3
EMC interference emission	According to EN 61000-6-3 (household environment)
Touch current according to IEC 60990 (measuring circuit Fig. 4, TN system)	<= 3.5 mA
Electrical hookup	Via terminal box
Motor protection	Thermal overload protector (TOP) internally connected
With cable	Variable
Protection class	I (with customer connection of protective earth)
Conformity with standards	EN 61800-5-1; CE
Approval	EAC; UL 2111; CSA C22.2 No. 77

Product drawing



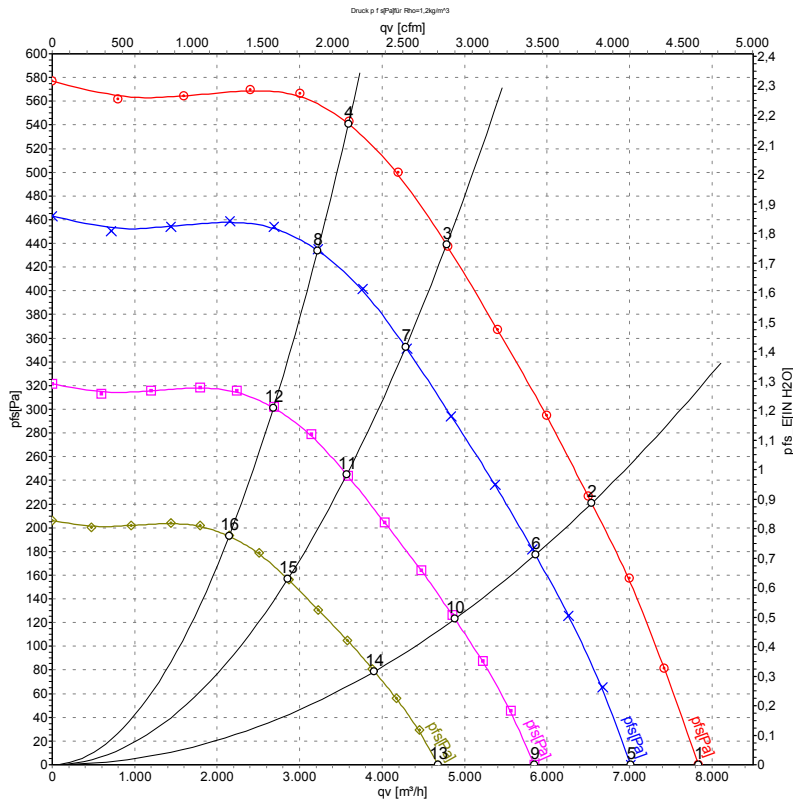
- |   |   |
|---|---|
| 1 | Accessory part: Inlet ring 54480-2-4013, not included in scope of delivery. |
| 2 | Max. clearance for screw 16 mm  |
| 3 | Cable diameter: min. 4 mm, max. 10 mm; tightening torque 2.5±0.4 Nm         |
| 4 | Tightening torque 3.5 ± 0.5 Nm  |

## Connection diagram



No.	Conn.	Designation	Function/assignment
PE		PE	Protective earth terminal
KL1	1, 2, 3	L1, L2, L3	Power supply 50/60 Hz
KL2	1	NC	Floating status contact, break for failure
KL2	2	COM	floating status contact, changeover contact, common connection (2 A, max. 250 VAC, min. 10 mA, AC1)
KL2	3	NO	Floating status contact, make for failure
KL3	1	OUT	Analog output, 0-10 VDC, max. 3 mA, SELV, output of current motor modulation level: 1 V corresponds to 10% modulation level. 10 V corresponds to 100% modulation level.
KL3	2, 8	GND	Reference ground for control interface, SELV
KL3	3, 7	0-10 V	Use control / current sensor value input 0-10 VDC, impedance 100 kΩ only as alternative to 4-20 mA input, SELV
KL3	4	+10 V	Voltage output 10 VDC (±3%), max. 10 mA, power supply for external devices (e.g. potentiometer), SELV
KL3	5	+20 V	Voltage output 20 VDC (+25%/-10%), max. 50 mA, power supply for external devices (e.g. sensors), SELV
KL3	6	4-20 mA	Use control / current sensor value input 4-20 mA, impedance 100 Ω only as alternative to 0-10 V input, SELV
KL3	9, 11	RSB	RS485 interface for ebmBUS, RSB, SELV
KL3	10, 12	RSA	RS485 interface for ebmBUS, RSA, SELV

## Curves: Air performance 50 Hz



Measurement: LU-107822-1

Air performance measured according to ISO 5801 installation category A. For detailed information on the measurement setup, contact ebmpapst. Intake sound level: Sound power level according to ISO 13347 / sound pressure level measured at 1 m distance from fan axis. The values given are valid under the specified measuring conditions and may vary due to conditions of installation. For deviations from the standard configuration, the parameters have to be checked on the installed unit.

## Measured values

	U	f	n	P <sub>ed</sub>	I	LpA <sub>in</sub>	LwA <sub>in</sub>	LwA <sub>out</sub>	qv	P <sub>fs</sub>	qv	P <sub>fs</sub>
	V	Hz	min <sup>-1</sup>	W	A	dB(A)	dB(A)	dB(A)	m <sup>3</sup> /h	Pa	CFM	inH2O
1	400	50	1330	718	1.22	74	82	87	7840	0	4615	0.00
2	400	50	1330	862	1.39	69	78	83	6540	220	3850	0.88
3	400	50	1330	1050	1.70	65	73	79	4780	440	2815	1.77
4	400	50	1330	1013	1.62	67	75	80	3595	540	2115	2.17
5	400	50	1200	514	0.87	72	79	84	7015	0	4130	0.00
6	400	50	1200	620	1.00	67	75	81	5860	177	3450	0.71
7	400	50	1200	750	1.21	63	71	76	4285	353	2525	1.42
8	400	50	1200	728	1.17	65	72	77	3220	436	1895	1.75
9	400	50	1000	298	0.50	68	76	80	5845	0	3440	0.00
10	400	50	1000	359	0.58	63	71	77	4885	123	2875	0.49
11	400	50	1000	434	0.70	59	67	73	3570	245	2100	0.98
12	400	50	1000	421	0.67	61	68	73	2680	302	1580	1.21
13	400	50	800	152	0.26	63	71	75	4675	0	2755	0.00
14	400	50	800	184	0.30	58	67	72	3905	79	2300	0.32
15	400	50	800	222	0.36	54	62	68	2855	157	1680	0.63
16	400	50	800	216	0.35	56	64	69	2145	194	1260	0.78

U = Power supply · f = Frequency · n = Speed (rpm) · P<sub>ed</sub> = Power consumption · I = Current draw · LpA<sub>in</sub> = Sound pressure level intake side · LwA<sub>in</sub> = Sound power level intake side  
 LwA<sub>out</sub> = Sound power level outlet side · qv = Air flow · p<sub>fs</sub> = Pressure increase

