

R3G355-RJ76-N1

EC centrifugal fan - RadiCal

backward curved, single inlet

for railway applications



R3G355-RJ76-N1 ebmpapst Datasheet

sales@fansco.com

www.fansco.com

Limited partnership · Headquarters Muldingen
County court Stuttgart · HRA 590344

General partner Elektrobau Muldingen GmbH · Headquarters Muldingen
County court Stuttgart · HRB 590142

Nominal data

Type	R3G355-RJ76-N1	
Motor	M3G112-EA	
Phase		3~
Nominal voltage	VAC	400
Nominal voltage range	VAC	380 .. 480
Frequency	Hz	50/60
Type of data definition		ml
Speed (rpm)	min ⁻¹	2400
Power input	W	1100
Current draw	A	1.7
Min. ambient temperature	°C	-40
Max. ambient temperature	°C	60

ml = Max. load · me = Max. efficiency · fa = Running at free air · cs = Customer specs · cu = Customer unit
Subject to alterations



Technical features

Mass	9.2 kg
Size	355 mm
Motor size	112
Surface of rotor	Coated in black
Material of electronics housing	Die-cast aluminium
Material of impeller	PA UL94 V0 plastic
Number of blades	6
Direction of rotation	Clockwise, seen on rotor
Type of protection	IP55
Insulation class	"F"
Humidity (F) / environmental protection class (H)	H3
Max. permissible ambient motor temp. (transp./ storage)	+80 °C
Min. permissible ambient motor temp. (transp./storage)	-40 °C
Mounting position	Shaft horizontal or rotor on bottom; rotor on top on request
Condensation drainage holes	Rotor-side
Operation mode	S1
Motor bearing	Ball bearing; (sealed)
Technical features	<ul style="list-style-type: none"> - Output 10 VDC, max. 10 mA - Alarm relay - Integrated PID controller - Run monitoring - Output limit - Motor current limit - Emergency operation - PFC, passive - RS485 MODBUS RTU - Soft start -Maximum EEPROM write cycles 100,000 - Control input 0-10 VDC / PWM - Control interface with SELV potential safely disconnected from the mains - Overvoltage detection - Over-temperature protected electronics / motor - Line undervoltage / phase failure detection
EMC directives	According to EN 50121-3-2
Touch current acc. IEC 60990 (measuring network Fig. 4, TN system)	<= 3.5 mA
Motor protection	Thermal overload protector (TOP) wired internally
Cable exit	Variable
Protection class	I (if protective earth is connected by customer)
Product conforming to standard	EN 15085-1, CPC3; EN 45545-2, HL3; EN 50155; EN 61373, Cat. 1B
Approval	EAC

EC centrifugal fan - RadiCal

backward curved, single inlet

for railway applications

Remark

A prerequisite for operation is a Class 1 vehicle electrical system architecture according to EN 50533; if voltage (e.g. 230 VAC) is passed through the alarm relay, the reinforced insulation property of the SELV signal wires will be lost and they will then have only basic insulation

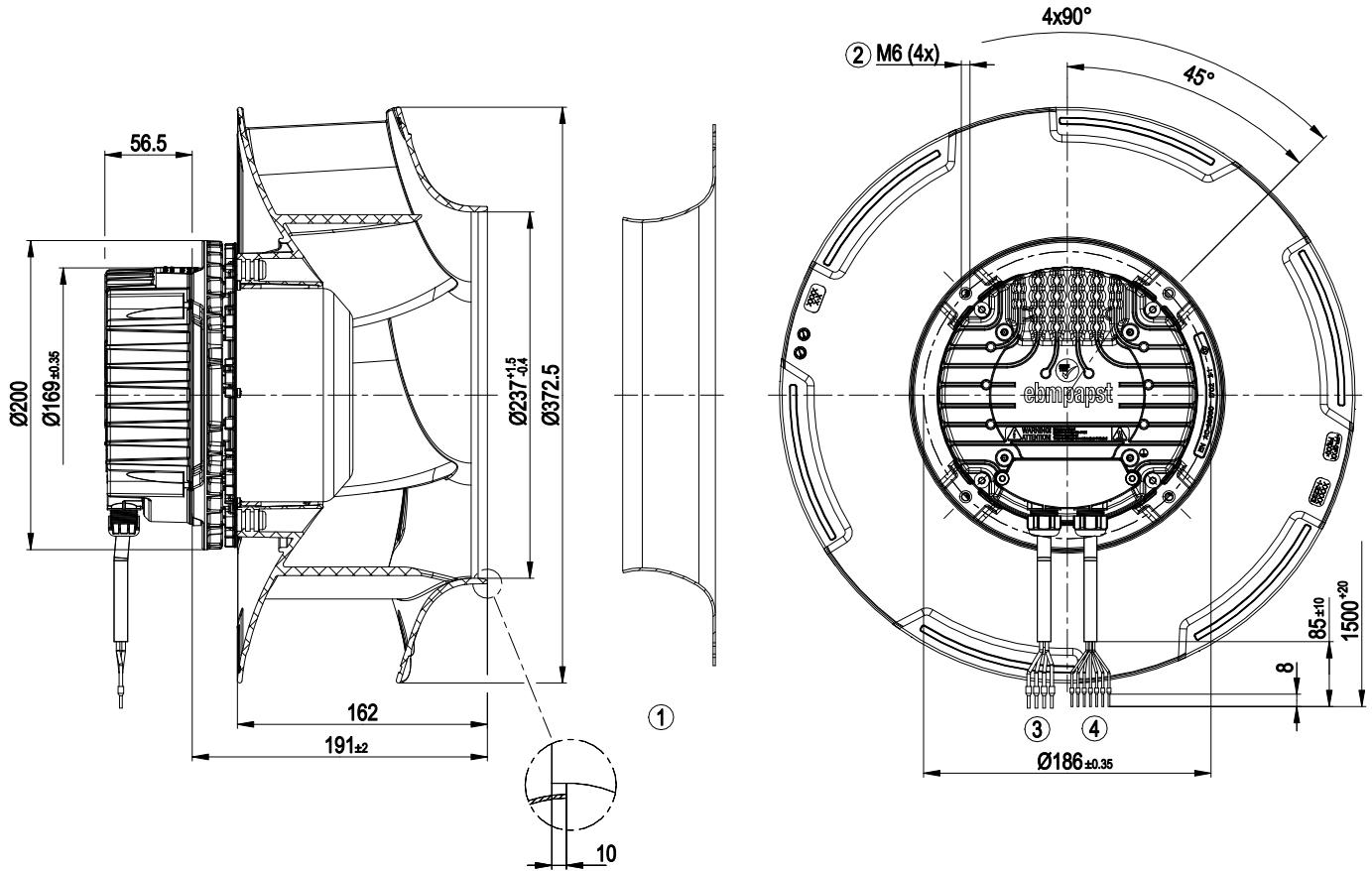
The SELV property (reinforced insulation) is not lost when voltages of up to 110 VDC are passed through the alarm relay; EN 50121-3-2: 2015 in preparation



EC centrifugal fan - RadiCal

backward curved, single inlet
for railway applications

Product drawing



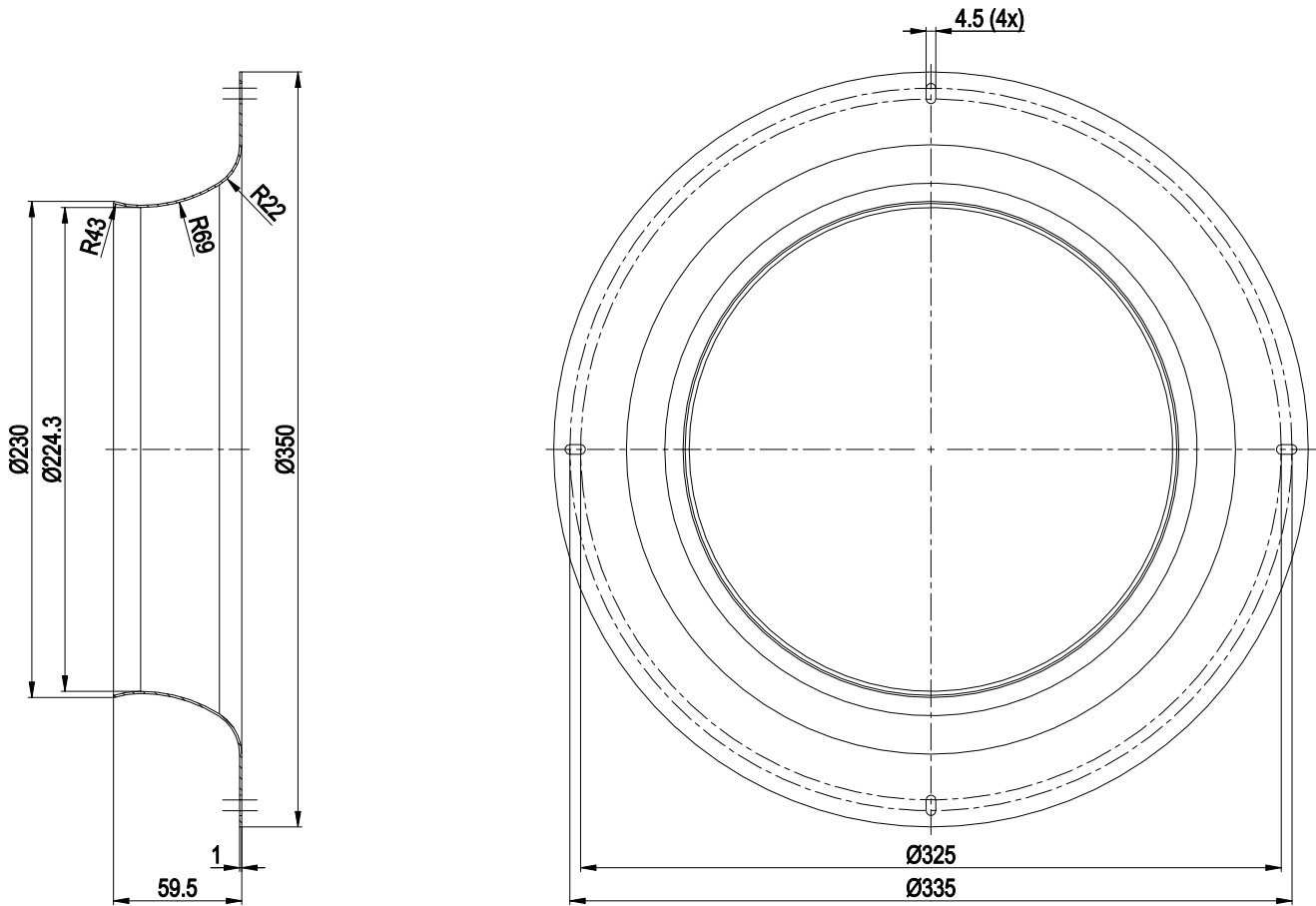
1	Accessory part: Inlet nozzle 35500-2-4013 not included in scope of delivery
2	Thread reach max. 16 mm
3	Connection line, halogen-free, railway application EN 45545, 4G 1.5 mm ² 4x core-end sleeve
4	Connection line, halogen-free, railway application EN 45545, 7x 0.5 mm ² 7x core-end sleeve

EC centrifugal fan - RadiCal

backward curved, single inlet

for railway applications

Accessory part



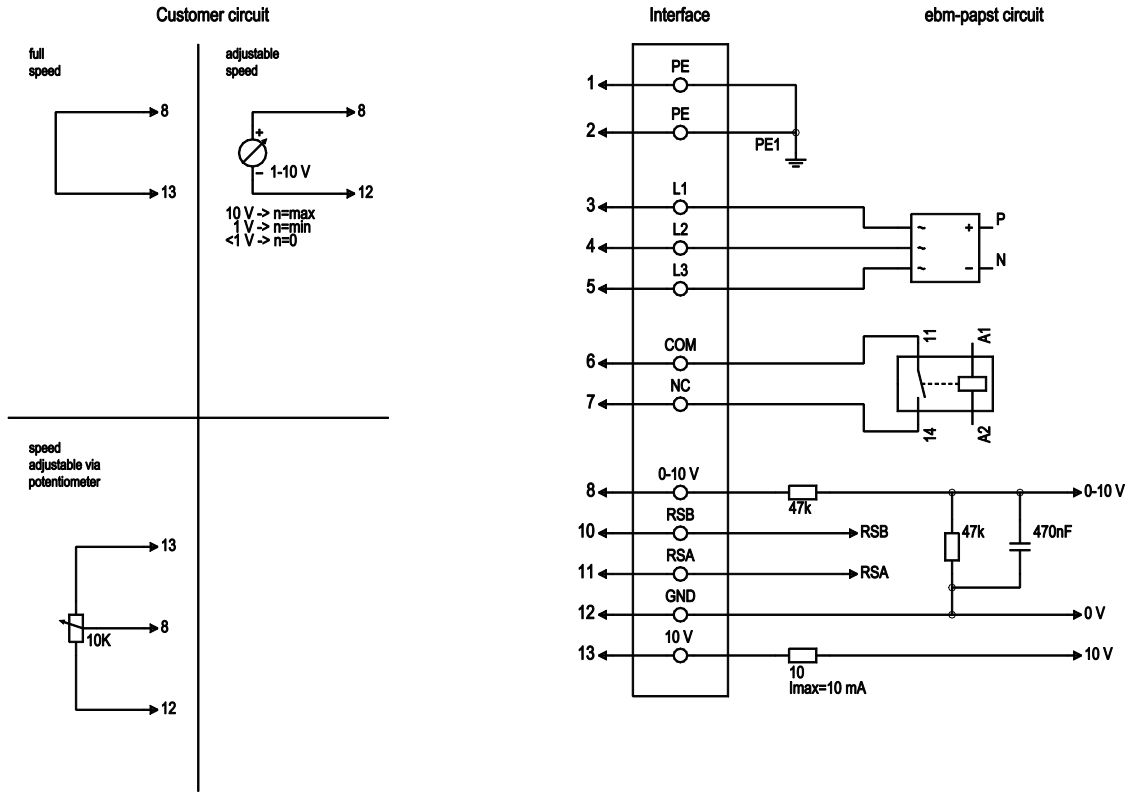
Inlet nozzle 35500-2-4013



EC centrifugal fan - RadiCal

backward curved, single inlet
for railway applications

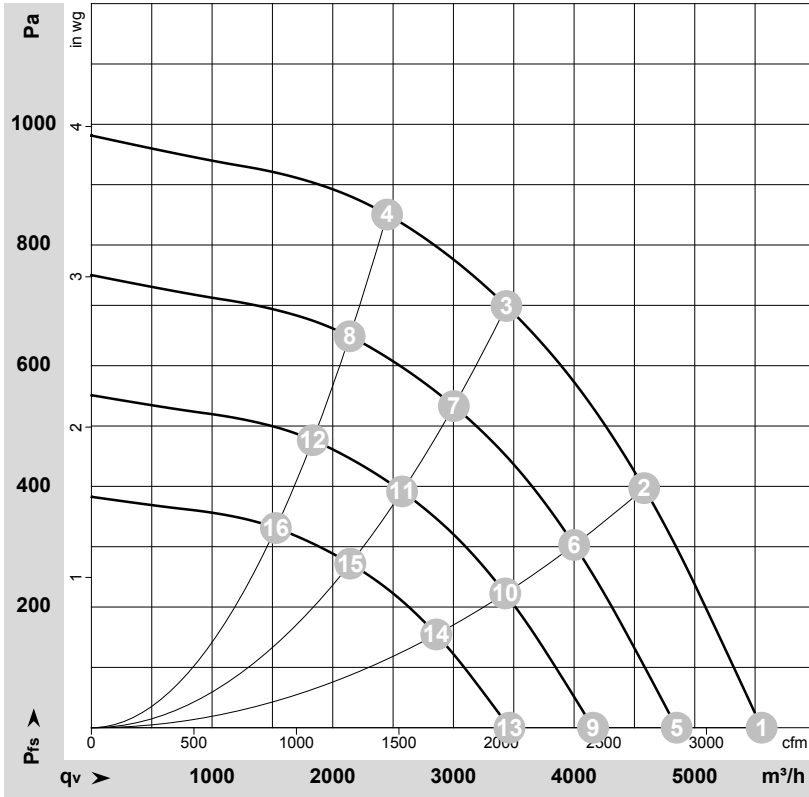
Connection screen



No.	Conn.	Designation	Colour	Function / assignment
1	1	PE	green/yellow	Protective earth
1	2	PE	-	not brought out via lead
1	3	L1	black	Power supply, phase, 50/60 Hz
1	4	L2	blue	Power supply, phase, 50/60 Hz
1	5	L3	brown	Power supply, phase, 50/60 Hz
2	6	COM	grey	Status relay, floating status contact, common connection, contact rating, 250 VAC / max. 2 A (AC1), min. 1 mA / 5 VDC, reinforced insulation with respect to control interface, basic insulation on mains side according to EN 50124-1
2	7	NC	orange	Status relay, floating status contact, break for failure, contact rating 250 VAC / max. 2 A (AC1), min. 1 mA / 5 VDC, reinforced insulation on control interface side, basic insulation on supply side according to EN 50124-1
2	8	0-10V	yellow	Analogue input (set value) SELV, 0-10 V, Ri=100kΩ, parametrisable curve
2	10	RSB	brown	RS485 interface for MODBUS, RSB; SELV
2	11	RSA	white	RS485 interface for MODBUS, RSA; SELV
2	12	GND	blue	Signal ground for control interface, SELV
2	13	+10V	red	Fixed voltage output 10 VDC, +10 V +/-3 %, max. 10 mA, short-circuit-proof, power supply for ext. devices (e.g. potentiometer); SELV



Charts: Air flow 50 Hz



$\rho = 1.15 \text{ kg/m}^3 \pm 2 \%$

Measurement: LU-180052-1

Air performance measured as per ISO 5801 Installation category A. For detailed information on the measuring set-up, please contact ebmpapst. Suction-side noise levels: LwA measured as per ISO 13347 / LpA measured with 1m distance to fan axis. The values given are valid under the measuring conditions mentioned above and may vary according to the actual installation situation. With any deviation from the standard set-up, the specific values have to be checked and reviewed with the unit installed.

Measured values

	U	f	n	P _{ed}	I	LpA _{in}	LwA _{in}	LwA _{out}	q _v	P _{fs}	q _v	P _{fs}
	V	Hz	min ⁻¹	W	A	dB(A)	dB(A)	dB(A)	m ³ /h	Pa	cfm	in. wg
1	400	50	2400	777	1.20	83	90	93	5555	0	3270	0.00
2	400	50	2400	1037	1.59	75	83	88	4580	400	2695	1.61
3	400	50	2400	1100	1.70	70	75	82	3440	700	2025	2.81
4	400	50	2400	1056	1.62	71	77	83	2450	850	1445	3.41
5	400	50	2100	518	0.80	79	87	90	4850	0	2855	0.00
6	400	50	2100	691	1.06	71	80	84	4000	304	2355	1.22
7	400	50	2100	738	1.13	67	72	79	3005	534	1765	2.14
8	400	50	2100	704	1.08	68	74	79	2140	650	1260	2.61
9	400	50	1800	326	0.51	76	83	86	4155	0	2445	0.00
10	400	50	1800	435	0.67	68	76	80	3430	223	2020	0.90
11	400	50	1800	465	0.71	63	68	75	2575	392	1515	1.57
12	400	50	1800	443	0.68	64	70	75	1835	478	1080	1.92
13	400	50	1500	189	0.29	71	79	81	3465	0	2040	0.00
14	400	50	1500	252	0.39	63	71	76	2860	155	1680	0.62
15	400	50	1500	269	0.41	58	63	70	2145	272	1260	1.09
16	400	50	1500	256	0.39	59	65	71	1530	332	900	1.33

U = Supply voltage · f = Frequency · n = Speed (rpm) · P_{ed} = Power input · I = Current draw · LpA_{in} = Sound pressure level inlet side · LwA_{in} = Sound power level inlet side · LwA_{out} = Sound power level outlet side
 q_v = Air flow · p_{fs} = Pressure increase

