

R3G310-AO52-01 ebmpapst Datasheet  
 sales@fansco.com  
 www.fansco.com

Limited partnership · Headquarters Muldingen  
 Amtsgericht (court of registration) Stuttgart · HRA 590344  
 General partner Elektrobau Muldingen GmbH · Headquarters Muldingen  
 Amtsgericht (court of registration) Stuttgart · HRB 590142

## Nominal data

Type	R3G310-AO52-01	
Motor	M3G074-CF	
Phase		1~
Nominal voltage	VAC	230
Nominal voltage range	VAC	200 .. 277
Frequency	Hz	50/60
Method of obtaining data		fa
Speed (rpm)	min <sup>-1</sup>	1925
Power consumption	W	150
Current draw	A	1.1
Min. ambient temperature	°C	-25
Max. ambient temperature	°C	60

ml = Max. load · me = Max. efficiency · fa = Free air · cs = Customer specification · ce = Customer equipment  
 Subject to change

## Data according to ErP Directive

		Actual	Req. 2015			
01 Overall efficiency $\eta_{es}$	%	59.8	43.4	09 Power consumption $P_{ed}$	kW	0.17
02 Measurement category		A		09 Air flow $q_v$	m <sup>3</sup> /h	1300
03 Efficiency category		Static		09 Pressure increase $p_{fs}$	Pa	250
04 Efficiency grade N		78.4	62	10 Speed (rpm) $n$	min <sup>-1</sup>	1705
05 Variable speed drive		Yes		11 Specific ratio <sup>*</sup>		1.00

Data obtained at optimum efficiency level.

The ErP data is determined using a motor-impeller combination in a standardized measurement setup.

<sup>\*</sup> Specific ratio =  $1 + p_{fs} / 100\,000\text{ Pa}$

LU-69203

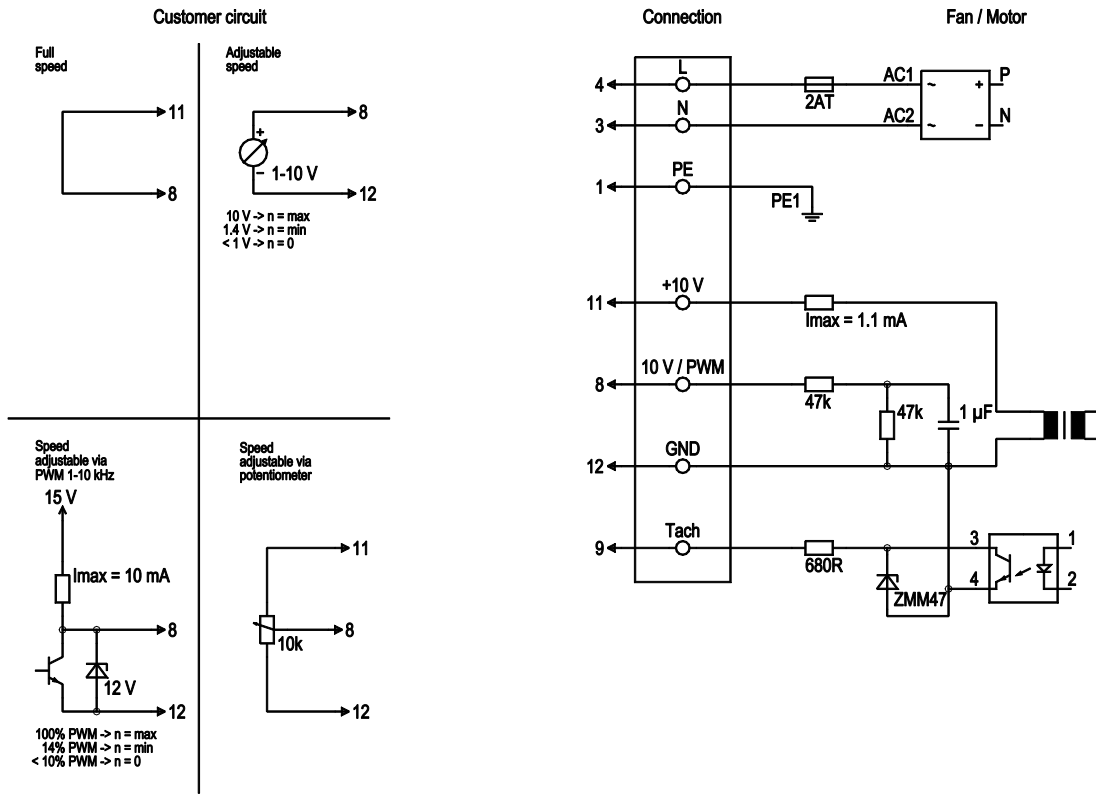


## Technical description

Weight	3.1 kg
Fan size	310 mm
Rotor surface	Galvanized
Electronics housing material	Die-cast aluminum
Impeller material	Sheet aluminum, laser-welded
Number of blades	6
Direction of rotation	Clockwise, viewed toward rotor
Degree of protection	IP44
Insulation class	"B"
Moisture (F) / Environmental (H) protection class	F3-1
Max. permitted ambient temp. for motor (transport/storage)	+ 80 °C
Min. permitted ambient temp. for motor (transport/storage)	- 40 °C
Installation position	Shaft horizontal or rotor on top; rotor on bottom on request
Condensation drainage holes	None
Mode	S1
Motor bearing	Ball bearing
Technical features	<ul style="list-style-type: none"> <li>- Output 10 VDC, max. 1.1 mA</li> <li>- Tach output</li> <li>- Motor current limitation</li> <li>- Soft start</li> <li>- Control input 0-10 VDC / PWM</li> <li>- Thermal overload protection for electronics/motor</li> </ul>
EMC immunity to interference	According to EN 61000-6-1
EMC circuit feedback	According to EN 61000-3-2/3
EMC interference emission	According to EN 61000-6-3 (household environment)
Touch current according to IEC 60990 (measuring circuit Fig. 4, TN system)	<= 3.5 mA
Motor protection	Thermal overload protector (TOP) internally connected
With cable	Variable
Protection class	I (with customer connection of protective earth)
Conformity with standards	EN 60335-1; CE
Approval	UL 2111; CSA C22.2 No. 77; EAC



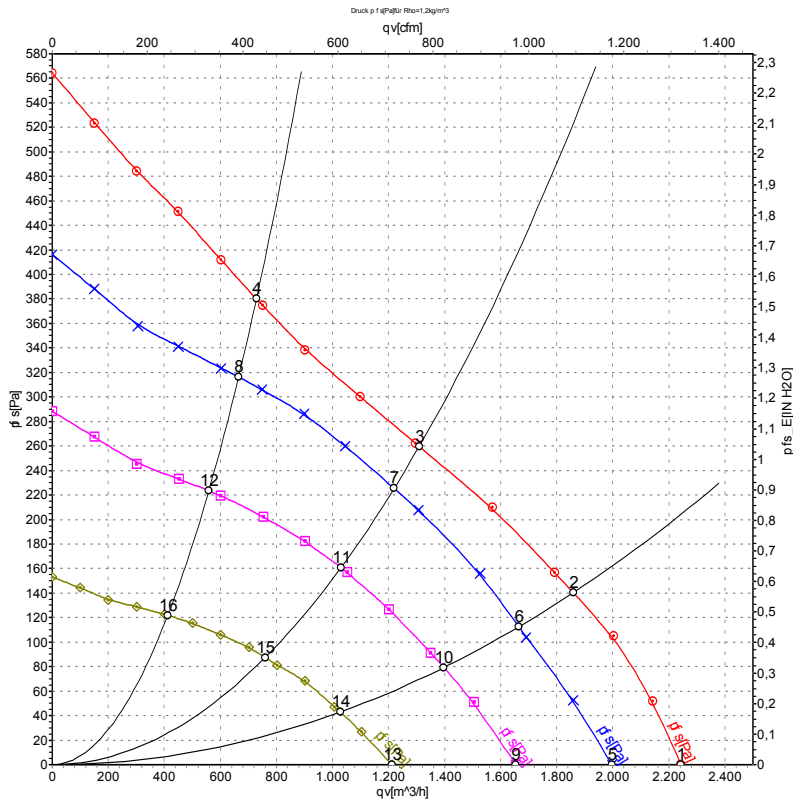
## Connection diagram



No.	Conn.	Designation	Color	Function/assignment
	4	L	black	Power supply 230 VAC, 50-60 Hz, see nameplate for voltage range
	3	N	blue	Neutral conductor
	1	PE	green/yellow	Protective earth
	8	0-10 V PWM	yellow	Control input 0-10 V or PWM, electrically isolated
	9	Tach	white	Tach output: open collector, 1 pulse per revolution, electrically isolated
	11	10V / max 1.1 mA	red	Voltage output 10 V/max. 1.1 mA, electrically isolated
	12	GND	blue	GND connection for control interface



## Curves: Air performance 50 Hz



Measurement: LU-69203-1  
 Measurement: LU-67778-1  
 Measurement: LU-67779-1  
 Measurement: LU-67780-1

Air performance measured according to ISO 5801 installation category A. For detailed information on the measurement setup, contact ebmpapst. Intake sound level: Sound power level according to ISO 13347 / sound pressure level measured at 1 m distance from fan axis. The values given are valid under the specified measuring conditions and may vary due to conditions of installation. For deviations from the standard configuration, the parameters have to be checked on the installed unit.

## Measured values

	U	f	n	P <sub>ed</sub>	I	q <sub>v</sub>	p <sub>is</sub>	q <sub>v</sub>	p <sub>is</sub>
	V	Hz	min <sup>-1</sup>	W	A	m <sup>3</sup> /h	Pa	cfm	inH <sub>2</sub> O
1	230	50	1925	150	1.10	2245	0	1320	0.00
2	230	50	1815	174	1.29	1860	140	1095	0.56
3	230	50	1705	172	1.27	1310	260	770	1.04
4	230	50	1775	175	1.29	730	380	430	1.53
5	230	50	1670	100	0.75	1995	0	1175	0.00
6	230	50	1610	131	0.96	1665	112	980	0.45
7	230	50	1585	140	1.01	1220	226	720	0.91
8	230	50	1610	135	0.99	665	316	390	1.27
9	230	50	1395	60	0.47	1655	0	975	0.00
10	230	50	1355	78	0.59	1395	79	820	0.32
11	230	50	1340	85	0.64	1030	161	605	0.65
12	230	50	1350	82	0.61	560	224	330	0.90
13	230	50	1025	28	0.23	1210	0	715	0.00
14	230	50	1005	36	0.28	1030	43	605	0.17
15	230	50	990	40	0.31	760	87	445	0.35
16	230	50	1000	38	0.30	410	122	240	0.49

U = Power supply · f = Frequency · n = Speed (rpm) · P<sub>ed</sub> = Power consumption · I = Current draw · q<sub>v</sub> = Air flow · p<sub>is</sub> = Pressure increase

