

EC centrifugal fan - RadiCal

backward curved, single inlet



R3G280-RO18-A3 ebmpapst Datasheet

sales@fansco.com

www.fansco.com

Limited partnership · Headquarters Muldingen
County court Stuttgart · HRA 590344

General partner Elektrobau Muldingen GmbH · Headquarters Muldingen
County court Stuttgart · HRB 590142

Nominal data

Type	R3G280-RO18-A3	
Motor	M3G084-DF	
Phase		1~
Nominal voltage	VAC	230
Nominal voltage range	VAC	200 .. 277
Frequency	Hz	50/60
Type of data definition		ml
Speed (rpm)	min ⁻¹	2550
Power input	W	460
Current draw	A	2.0
Min. ambient temperature	°C	-25
Max. ambient temperature	°C	40

ml = Max. load · me = Max. efficiency · fa = Running at free air · cs = Customer specs · cu = Customer unit
Subject to alterations

Data according to ErP directive

		Actual	Request 2015		
01 Overall efficiency η_{es}	%	64.7	47.9	09 Power input P_{ed}	kW 0.45
02 Measurement category		A		09 Air flow q_v	m ³ /h 2000
03 Efficiency category		Static		09 Pressure increase p_{fs}	Pa 480
04 Efficiency grade N		78.8	62	10 Speed (rpm) n	min ⁻¹ 2535
05 Variable speed drive		Yes		11 Specific ratio*	1.01

Data definition with optimum efficiency.
The ErP data is determined using a motor-impeller combination in a standardised measurement configuration.

* Specific ratio = $1 + p_{fs} / 100\,000\text{ Pa}$

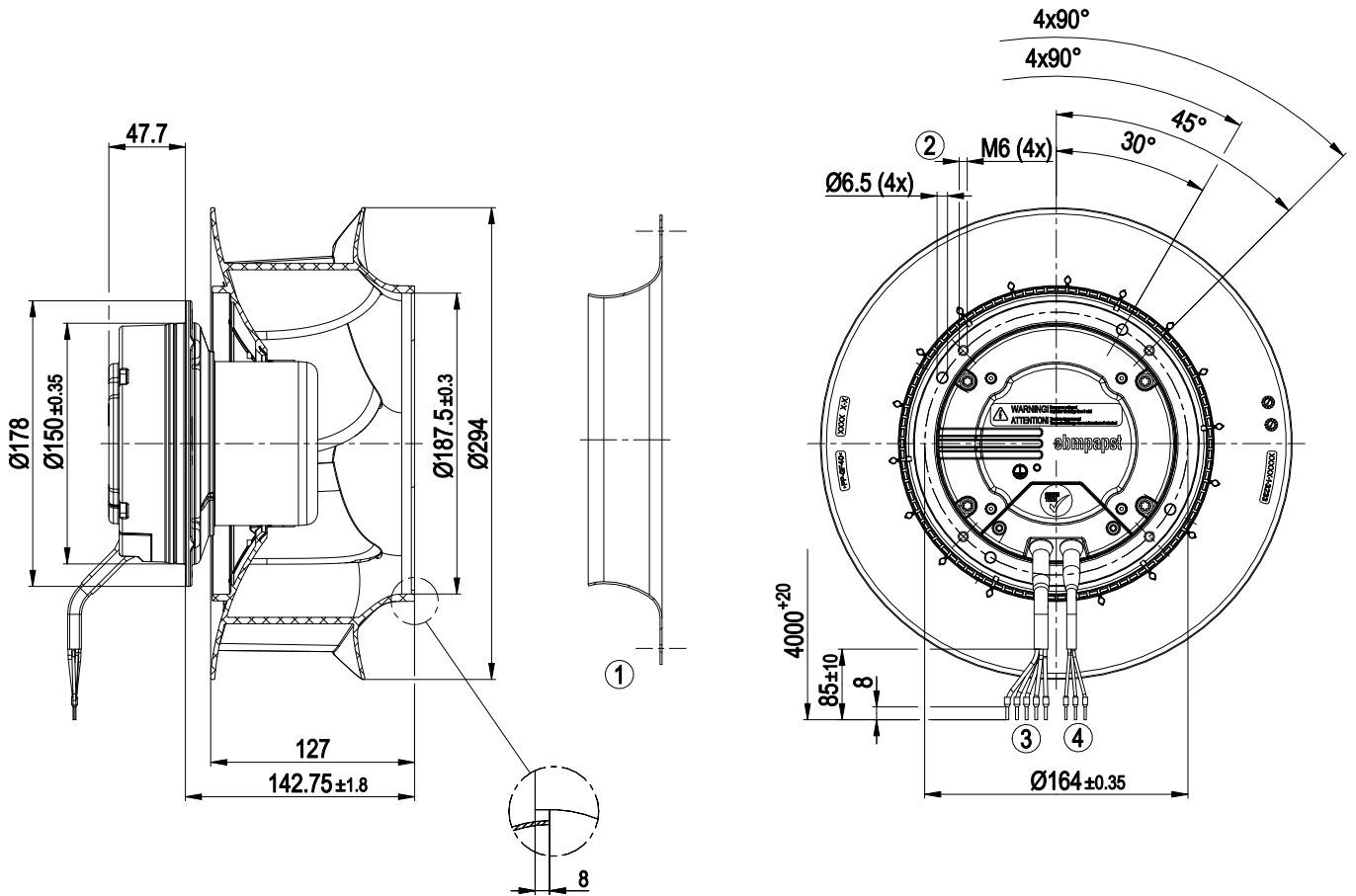
LU-136485



Technical features

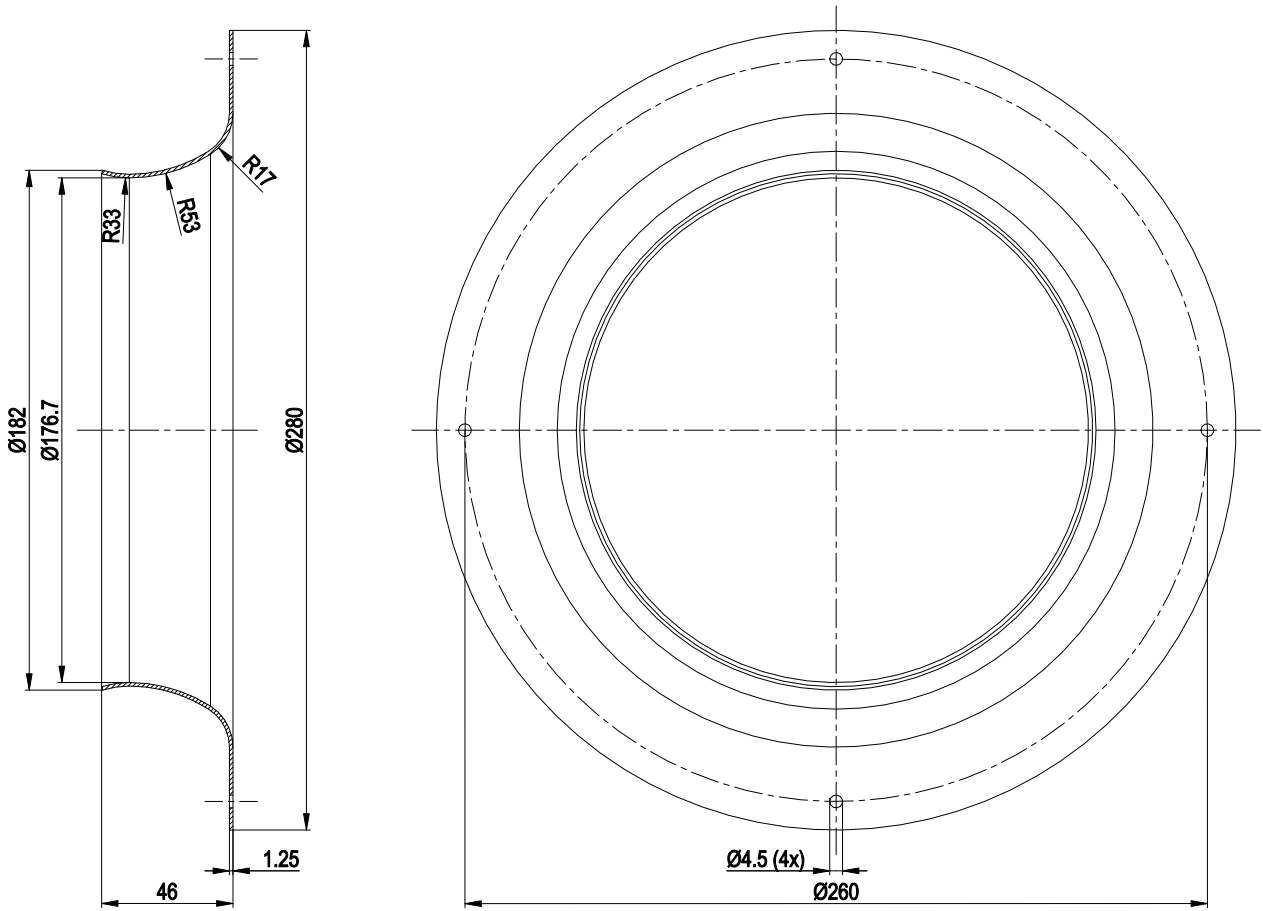
Mass	4.8 kg
Size	280 mm
Surface of rotor	Coated in black
Material of electronics housing	Die-cast aluminium
Material of impeller	PA UL94 V0 plastic
Number of blades	6
Direction of rotation	Clockwise, seen on rotor
Type of protection	IP 54
Insulation class	"B"
Humidity (F)/environmental protection class (H)	H1
Max. permissible ambient motor temp. (transp./ storage)	+ 80 °C
Min. permissible ambient motor temp. (transp./storage)	- 40 °C
Mounting position	Any
Condensate discharge holes	None
Operation mode	S1
Motor bearing	Ball bearing
Technical features	<ul style="list-style-type: none"> - Output 10 VDC, max. 10 mA - Alarm relay - Motor current limit - PFC, active - Soft start - Control input 0-10 VDC / PWM - Control interface with SELV potential safely disconnected from the mains - Over-temperature protected electronics / motor - Line undervoltage / phase failure detection
Touch current acc. IEC 60990 (measuring network Fig. 4, TN system)	<= 3.5 mA
Motor protection	Thermal overload protector (TOP) wired internally
Cable exit	Variable
Protection class	I (if protective earth is connected by customer)
Product conforming to standard	EN 61800-5-1
Approval	UL1004-3 +60730; C22.2 Nr.77 + CAN/CSA-E60730-1

Product drawing



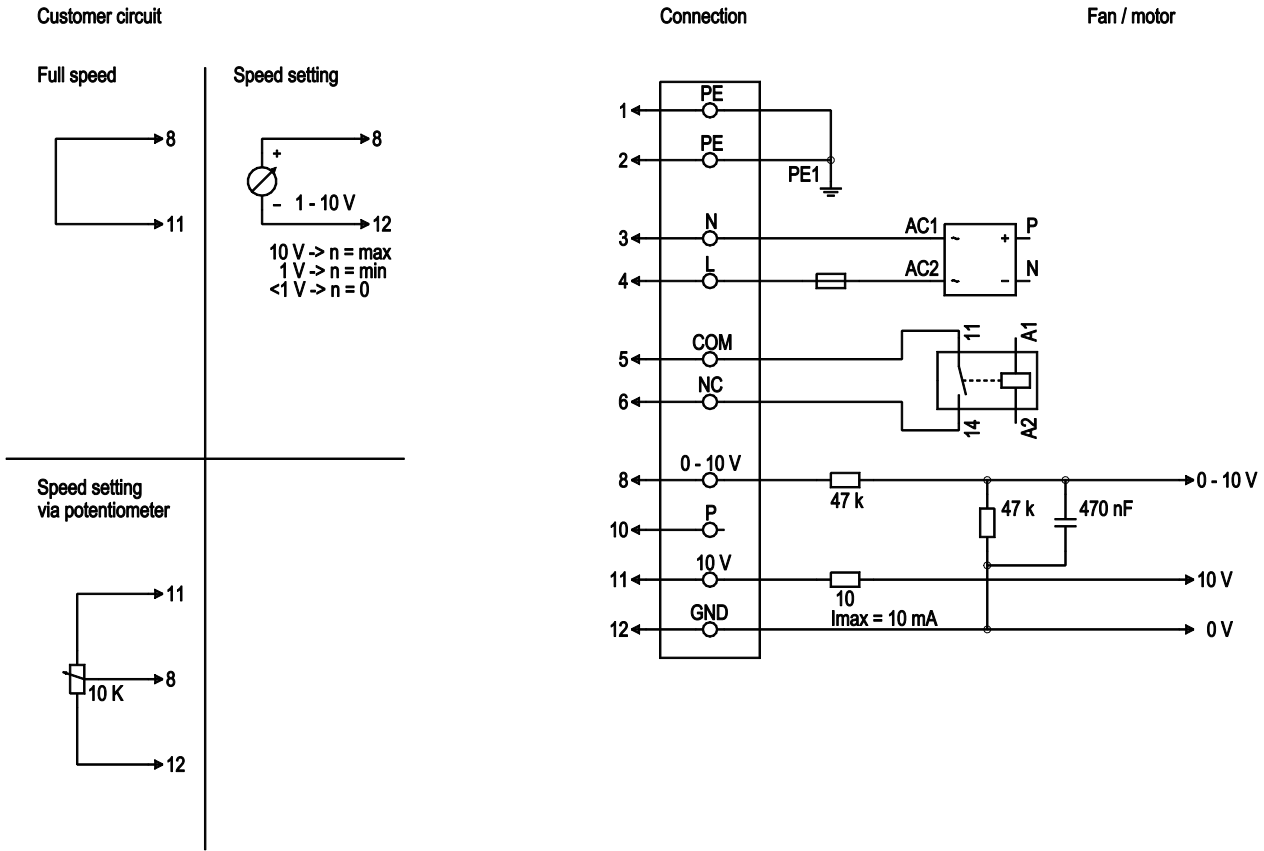
1	Accessory part: Inlet nozzle 28000-2-4013 not included in scope of delivery
2	Thread reach max. 10 mm
3	Connection line PVC AWG18, 5x crimped core-end sleeves
4	Connection line PVC AWG22, 3x crimped core-end sleeves

Accessory part



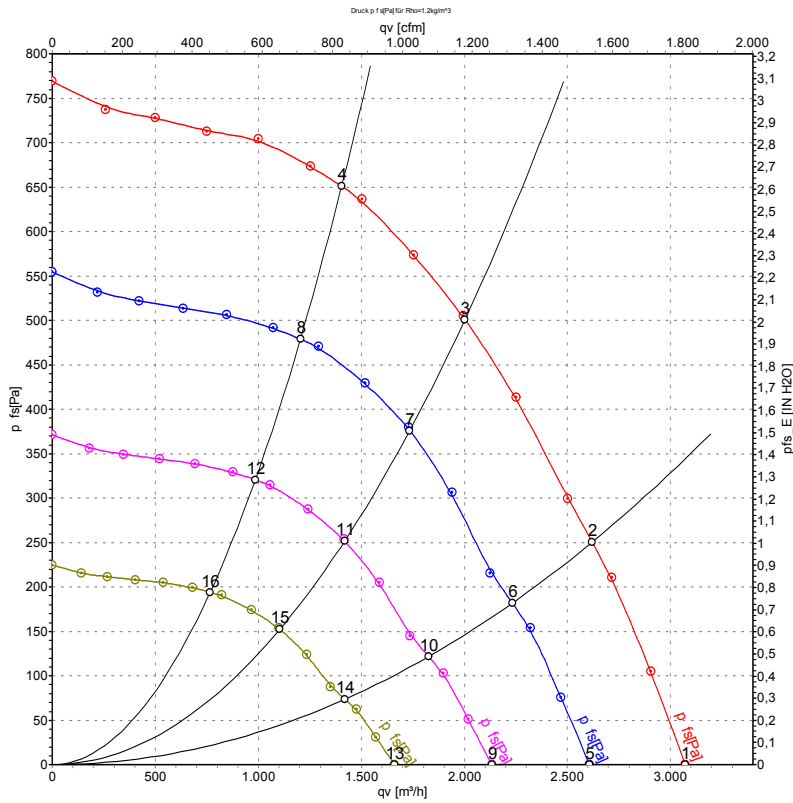
Accessory part: Inlet nozzle 28000-2-4013 not included in scope of delivery

Connection screen



No.	Conn.	Designation	Colour	Function / assignment
1	1, 2	PE	green/yellow	Protective earth
1	3	N	blue	Supply voltage, neutral conductor, voltage range see rating plate, 50 / 60 Hz
1	4	L	black	Supply voltage, phase, voltage range see rating plate, 50 / 60 Hz
1	5	COM	white 1	Floating status message contact, normally closed connection (2 A, max. 250 VAC, min. 10 mA)
1	6	NC	white 2	Floating status message contact, normally closed connection
2	8	0 - 10 V	yellow	Control input, set value 0 - 10 VDC, impedance 100 kOhm, SELV
2	10	P	orange	Not assigned
2	11	10 VDC	red	Voltage output 10 VDC (+/-3%), max. 10 mA, supply voltage for ext. devices (e.g. potentiometer), SELV
2	12	GND	blue	Reference mass for control interface, SELV

Charts: Air flow 50 Hz



Measurement: LU-136485-1

Air performance measured as per ISO 5801 Installation category A. For detailed information on the measuring set-up, please contact ebm-papst. Suction-side noise levels: L_{wA} measured as per ISO 13347 / L_{pA} measured with 1m distance to fan axis. The values given are valid under the measuring conditions mentioned above and may vary according to the actual installation situation. With any deviation from the standard set-up, the specific values have to be checked and reviewed with the unit installed.

Measured values

	U	f	n	P _{ed}	I	q _v	P _{fs}	q _v	P _{fs}
	V	Hz	min ⁻¹	W	A	m³/h	Pa	cfm	inH ₂ O
1	230	50	2570	353	1.56	3070	0	1810	0.00
2	230	50	2570	424	1.86	2620	250	1540	1.00
3	230	50	2550	460	2.00	2000	500	1180	2.01
4	230	50	2570	437	1.91	1405	650	825	2.61
5	230	50	2200	216	0.95	2610	0	1535	0.00
6	230	50	2200	262	1.15	2235	182	1315	0.73
7	230	50	2200	298	1.30	1735	378	1020	1.52
8	230	50	2200	276	1.21	1205	479	710	1.92
9	230	50	1800	118	0.52	2135	0	1255	0.00
10	230	50	1800	144	0.63	1825	122	1075	0.49
11	230	50	1800	163	0.71	1420	253	835	1.02
12	230	50	1800	151	0.66	985	321	580	1.29
13	230	50	1400	56	0.25	1660	0	975	0.00
14	230	50	1400	68	0.30	1420	74	835	0.30
15	230	50	1400	77	0.34	1105	153	650	0.61
16	230	50	1400	71	0.31	765	194	450	0.78

U = Supply voltage · f = Frequency · n = Speed (rpm) · P_{ed} = Power input · I = Current draw · q_v = Air flow · P_{fs} = Pressure increase

