

R3G250-RV83-01

# EC centrifugal fan - RadiCal

backward-curved, single-intake

for rail applications



R3G250-RV83-01 ebmpapst Datasheet

[sales@fansco.com](mailto:sales@fansco.com)

[www.fansco.com](http://www.fansco.com)

Limited partnership · Headquarters Mulfingen

Amtsgericht (court of registration) Stuttgart · HRA 590344

General partner Elektrobau Mulfingen GmbH · Headquarters Mulfingen

Amtsgericht (court of registration) Stuttgart · HRB 590142

## Nominal data

Type	R3G250-RV83-01	
Motor	M3G074-CF	
Nominal voltage	VDC	110
Method of obtaining data		ml
Speed (rpm)	min <sup>-1</sup>	2485
Power consumption	W	160
Current draw	A	1.5
Min. ambient temperature	°C	-40
Max. ambient temperature	°C	60

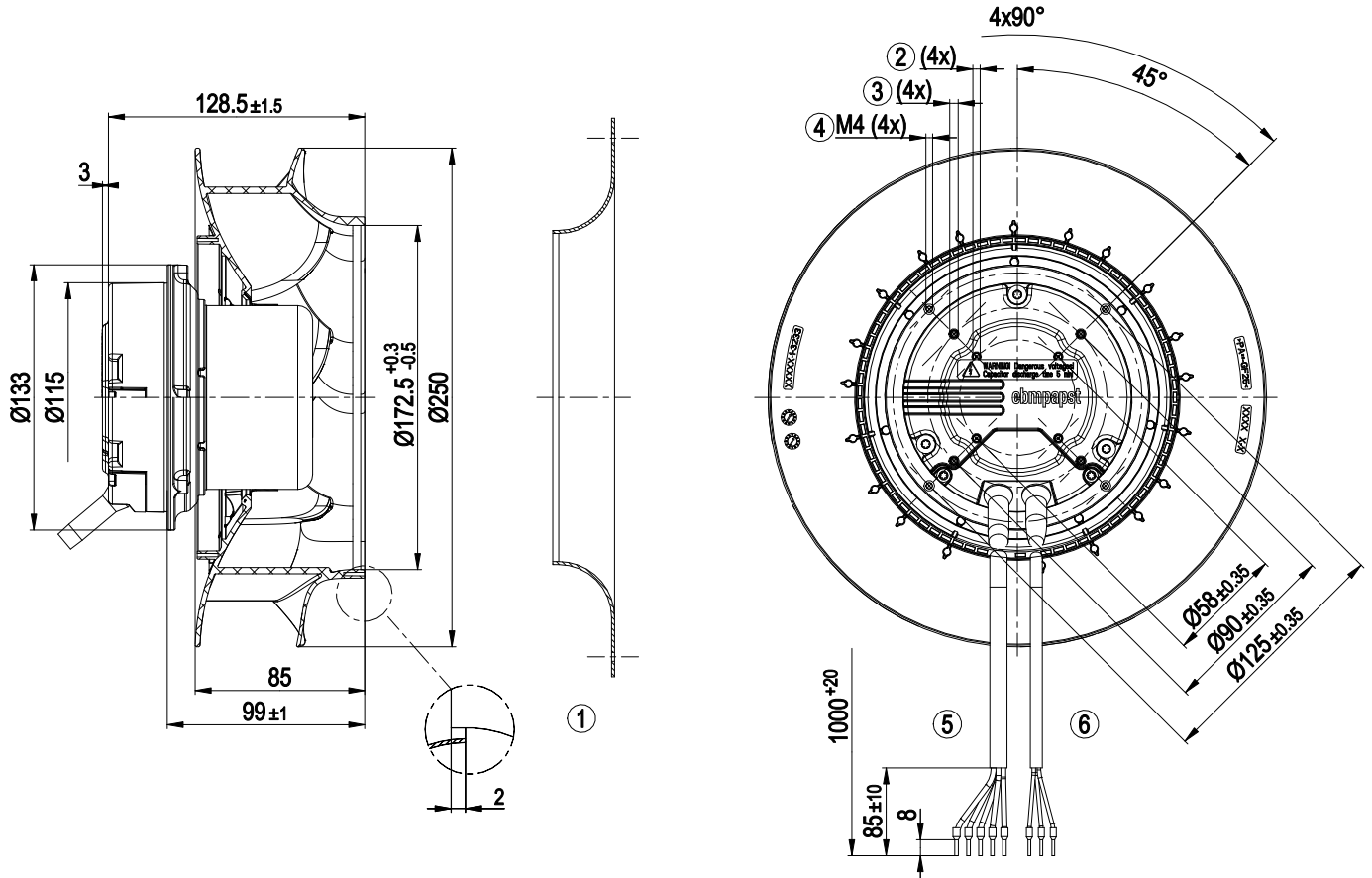
ml = Max. load · me = Max. efficiency · fa = Free air · cs = Customer specification · ce = Customer equipment  
Subject to change



## Technical description

<b>Weight</b>	2.47 kg
<b>Size</b>	250 mm
<b>Motor size</b>	74
<b>Rotor surface</b>	Painted black
<b>Electronics housing material</b>	Die-cast aluminum
<b>Impeller material</b>	PA plastic UL94 V0
<b>Number of blades</b>	7
<b>Direction of rotation</b>	Clockwise, viewed toward rotor
<b>Degree of protection</b>	IP44; installation- and position-dependent as per EN 60034-5
<b>Insulation class</b>	"B"
<b>Moisture (F) / Environmental (H) protection class</b>	H3
<b>Max. permitted ambient temp. for motor (transport/storage)</b>	+80 °C
<b>Min. permitted ambient temp. for motor (transport/storage)</b>	-40 °C
<b>Installation position</b>	Shaft horizontal or rotor on bottom; rotor on top on request
<b>Condensation drainage holes</b>	On rotor side
<b>Mode</b>	S1
<b>Motor bearing</b>	Ball bearing
<b>Technical features</b>	<ul style="list-style-type: none"> <li>- Output 10 VDC, max. 10 mA</li> <li>- Alarm relay</li> <li>- Run monitoring</li> <li>- Power limiter</li> <li>- Motor current limitation</li> <li>- Soft start</li> <li>- Control input 0-10 VDC / PWM</li> <li>- Thermal overload protection for electronics/motor</li> <li>- Reverse polarity protection</li> </ul>
<b>EMC regulations</b>	According to EN 50121-3-2
<b>Motor protection</b>	Thermal overload protector (TOP) internally connected
<b>With cable</b>	Variable
<b>Protection class assignment</b>	<p>I; If a protective earth is connected by the customer</p> <p>This component for installation may have several local protection classes. This information relates to this component's basic design.</p> <p>The final protection class is based on the component's intended installation and connection.</p>
<b>Conformity with standards</b>	EN 15085-1, CPC3: 2007; EN 45545-2, HL3: 2013; EN 50155: 2008; EN 61373, Cat. 1B: 2010
<b>Approval</b>	EAC
<b>Comment</b>	<p>Only suitable for indoor use; if supply potential (e.g. 230 VAC) is passed through the alarm relay, the SELV signal wires lose their property of reinforced insulation and they then have only basic insulation</p> <p>The SELV property (reinforced insulation) is not lost when voltages of up to 110 VDC are passed through the alarm relay.</p>

Product drawing



1	Accessory part: Inlet ring 96420-2-4013 (not included in scope of delivery)
2	Tapping hole prepared for self-tapping M4 screw, max. screw-in depth 8 mm
3	Tapping hole prepared for self-tapping M4 screw, max. screw-in depth 6 mm
4	Max. clearance for screw 10 mm
5	Cable, halogen-free, railway application EN 45545, 5G 1.0 mm <sup>2</sup> 5x wire-end ferrule
6	Cable, halogen-free, railway application EN 45545, 3x 0.33 mm <sup>2</sup> 3x wire-end ferrule

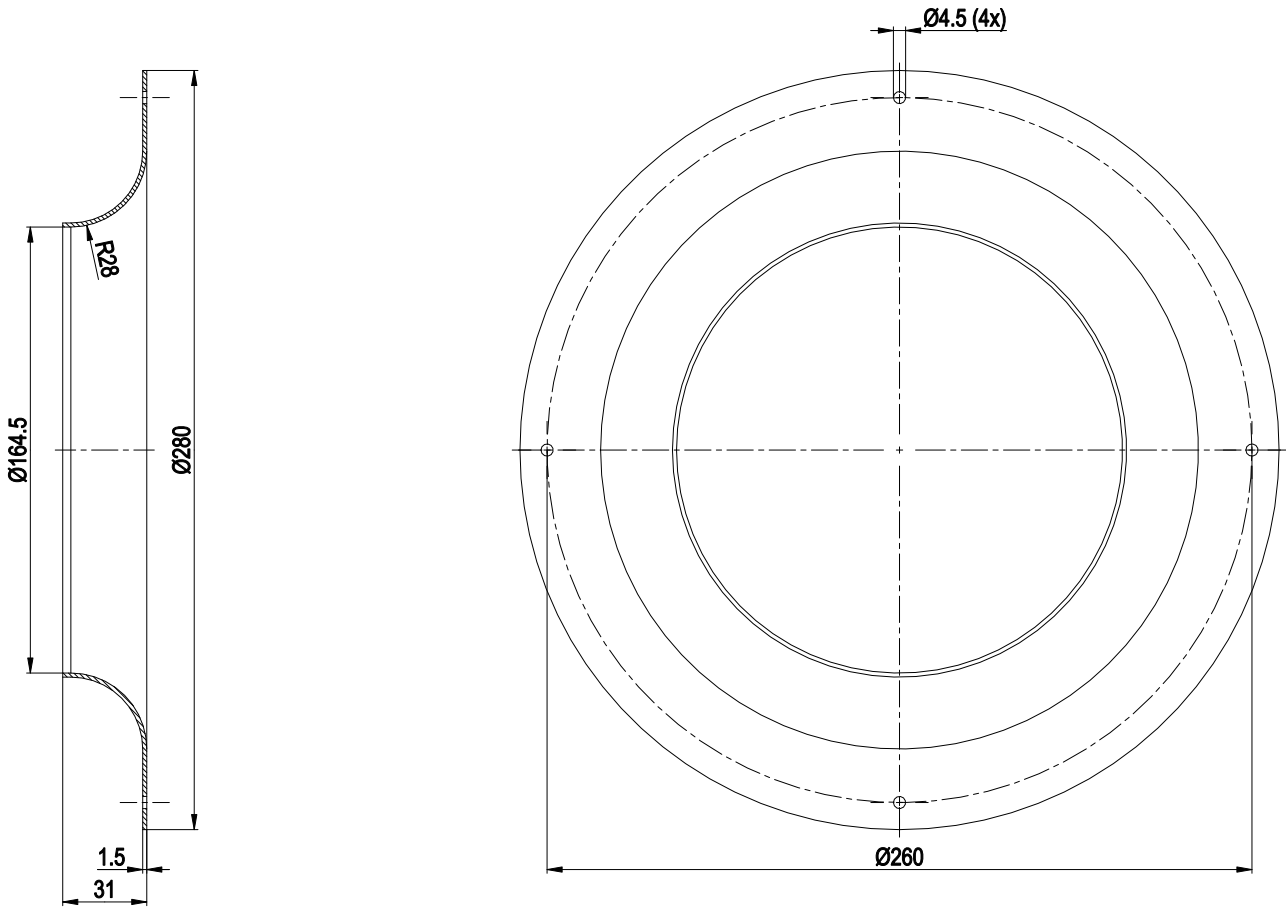


# EC centrifugal fan - RadiCal

backward-curved, single-intake

for rail applications

## Accessory part



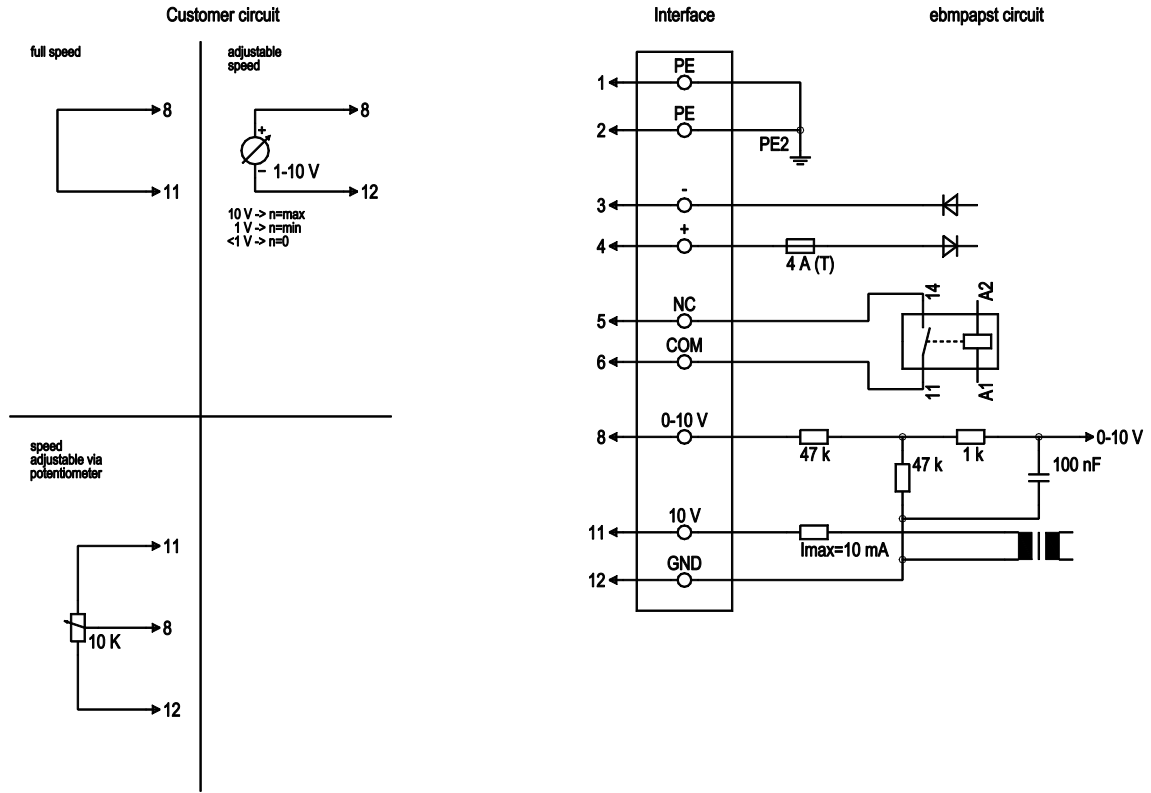
Inlet ring 96420-2-4013



# EC centrifugal fan - RadiCal

backward-curved, single-intake  
for rail applications

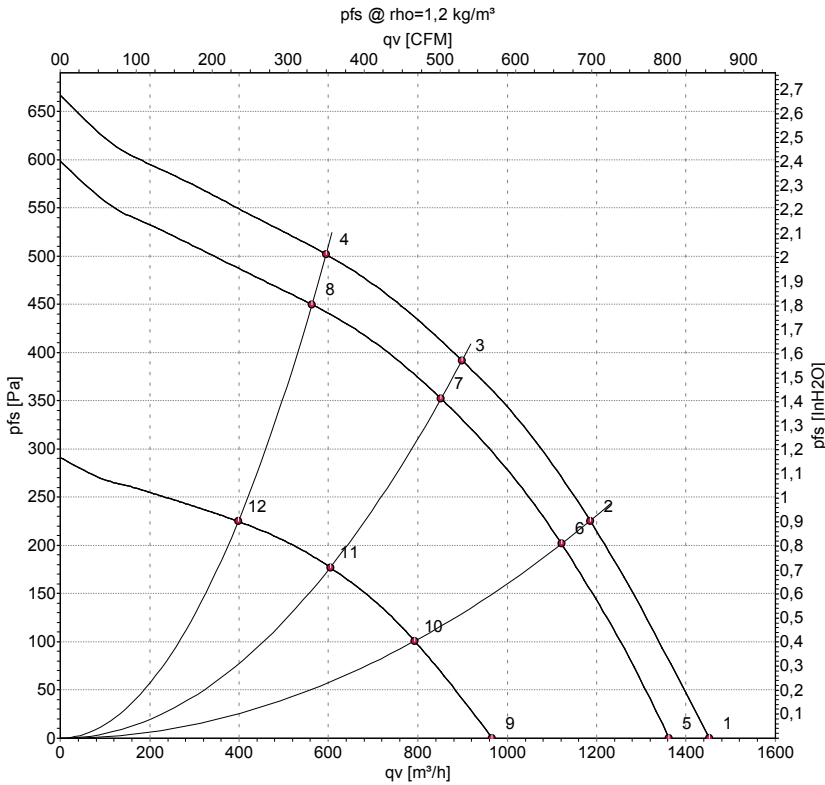
## Connection diagram



No.	Conn.	Designation	Color	Function/assignment
1	1, 2	PE	green/yellow	Protective earth
1	3	-	blue	Power supply, GND (110 VDC)
1	4	+	red	Power supply, 110 VDC
1	5	NC	white 2	Floating status contact (0.3 A - 110 VDC, 1 A - 60 VDC, 3 A - 30 VDC), closed at $n \geq 100$ rpm, break for failure
1	6	COM	white 1	Floating status contact, closed at $n \geq 100$ rpm, break for failure
2	8	0-10 V	yellow	Control input, set value 0-10 VDC, impedance 100 k $\Omega$ , SELV
2	11	10 VDC	red	Voltage output 10 VDC ( $\pm 3\%$ ), max. 10 mA, power supply for external devices (e.g. potentiometer), SELV
2	12	GND	blue	Reference ground for control interface (SELV)



## Curves: Air performance



Measurement: LU-158399-1  
 Measurement: LU-158263-1  
 Measurement: LU-158396-1

Air performance measured according to ISO 5801 installation category A. For detailed information on the measurement setup, contact ebmpapst. Intake sound level: Sound power level according to ISO 13347 / sound pressure level measured at 1 m distance from fan axis. The values given are valid under the specified measuring conditions and may vary due to conditions of installation. For deviations from the standard configuration, the parameters have to be checked on the installed unit.

## Measured values

	U	n	P <sub>ed</sub>	I	LpA <sub>in</sub>	LwA <sub>in</sub>	q <sub>v</sub>	P <sub>fs</sub>	q <sub>v</sub>	P <sub>fs</sub>
	V	min <sup>-1</sup>	W	A	dB(A)	dB(A)	m <sup>3</sup> /h	Pa	cfm	in. wg
1	138	2690	155	1.12			1450	0	855	0.00
2	138	2640	181	1.31			1185	226	700	0.91
3	138	2620	189	1.37			900	392	530	1.57
4	138	2650	175	1.27			595	502	350	2.02
5	110	2525	131	1.19	66	74	1360	0	800	0.00
6	110	2490	155	1.41	62	70	1120	200	660	0.80
7	110	2485	160	1.50	60	67	850	350	500	1.41
8	110	2505	152	1.38	64	71	565	450	330	1.81
9	77	1790	52	0.68			965	0	570	0.00
10	77	1770	60	0.78			795	101	465	0.41
11	77	1765	62	0.81			605	177	355	0.71
12	77	1775	59	0.77			400	225	235	0.90

U = Voltage · n = Speed (rpm) · P<sub>ed</sub> = Power consumption · I = Current draw · LpA<sub>in</sub> = Sound pressure level intake side · LwA<sub>in</sub> = Sound power level intake side · q<sub>v</sub> = Air flow  
 p<sub>fs</sub> = Pressure increase

