

R3G140-AW17-19

EC centrifugal fan

forward curved



R3G140-AW17-19 ebmpapst Datasheet

sales@fansco.com

www.fansco.com

Limited partnership · Headquarters Muldingen
County court Stuttgart · HRA 590344

General partner Elektrobau Muldingen GmbH · Headquarters Muldingen
County court Stuttgart · HRB 590142

Nominal data

Type	R3G140-AW17-19	
Motor	M3G055-CF	
Phase		1~
Nominal voltage	VAC	230
Frequency	Hz	50/60
Type of data definition		ml
Speed	min ⁻¹	2750
Power input	W	100
Current draw	A	0.75
Max. ambient temperature	°C	40

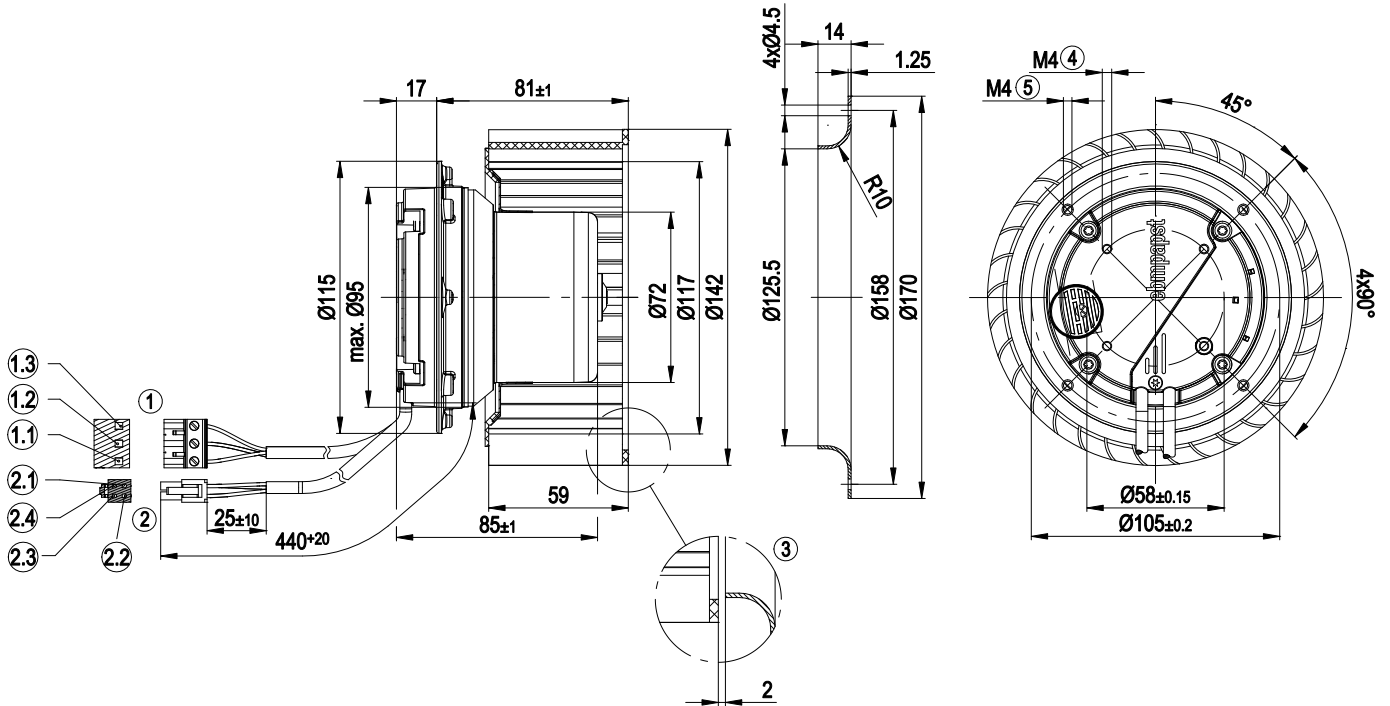
ml = max. load · me = max. efficiency · fa = running at free air · cs = customer specs · cu = customer unit
Subject to alterations



Technical features

Mass	1.21 kg
Size	140 mm
Surface of rotor	Thick layer passivated
Material of impeller	Plastic PA66, fibreglass-reinforced, round sheet-metal plate coated in black
Number of blades	33
Direction of rotation	Clockwise, seen on rotor
Type of protection	IP 44
Insulation class	"B"
Humidity class	F3-1
Max. permissible ambient motor temp. (transp./ storage)	+80 °C
Min. permissible ambient motor temp. (transp./storage)	-40 °C
Mounting position	Any
Condensate discharge holes	Rotor-side
Operation mode	S1
Motor bearing	Ball bearing
Technical features	<ul style="list-style-type: none"> - Control input 0-10 VDC / PWM - Output 10 VDC, max. 1.1 mA - Tach output - Motor current limit - Soft start
EMC interference immunity	Acc. to EN 61000-6-2
EMC harmonics	Acc. to EN 61000-3-2/3
EMC interference emission	Acc. to EN 61000-6-3
Touch current acc. IEC 60990 (measuring network Fig. 4, TN system)	<= 3.5 mA
Electrical leads	With plug
Motor protection	Locked-rotor protection
Cable exit	Variable
Protection class	I (if protective earth is connected by customer)
Approval	GOST

Product drawing



1	Phoenix connector housing GMSTB 2.5 / 3 ST green, connection line H03VV - F 3G 0.5 with 3x brass lead tips
PIN1	green/yellow
PIN2	brown
PIN3	blue
2	Molex Mini-Fit 5557 connector housing Dual Row 39-01-2045, connection line A03VV - F 4x0.25 with 3x Molex Mini-Fit 5556 39-00-0038
PIN1	Control input (yellow)
PIN2	Tach output (white)
PIN3	GND (light blue)
PIN4	n.c. (not assigned)
3	Accessory part: Inlet nozzle 09576-2-4013, not included in the standard scope of delivery
4	Depth of screw max. 6 mm
5	Depth of screw max. 6 mm

Connection screen

Customer circuit

Connection

Fan / motor

Notes on various control possibilities and their applications

