

## AC centrifugal fan

backward curved

Automotive

R2D250-AF24-14 ebmpapst Datasheet

sales@fansco.com

www.fansco.com

## Nominal data

Type	R2D250-AF24-14		
Motor	M2D068-EC		
Phase		3~	3~
Nominal voltage	VAC	400	400
Connection		Y	Y
Frequency	Hz	50	60
Type of data definition		fa	fa
Valid for approval / standard		-	-
Speed (rpm)	min <sup>-1</sup>	2550	2700
Power input	W	150	215
Current draw	A	0.24	0.33
Min. back pressure	Pa	0	0
Min. ambient temperature	°C	-25	-25
Max. ambient temperature	°C	50	35

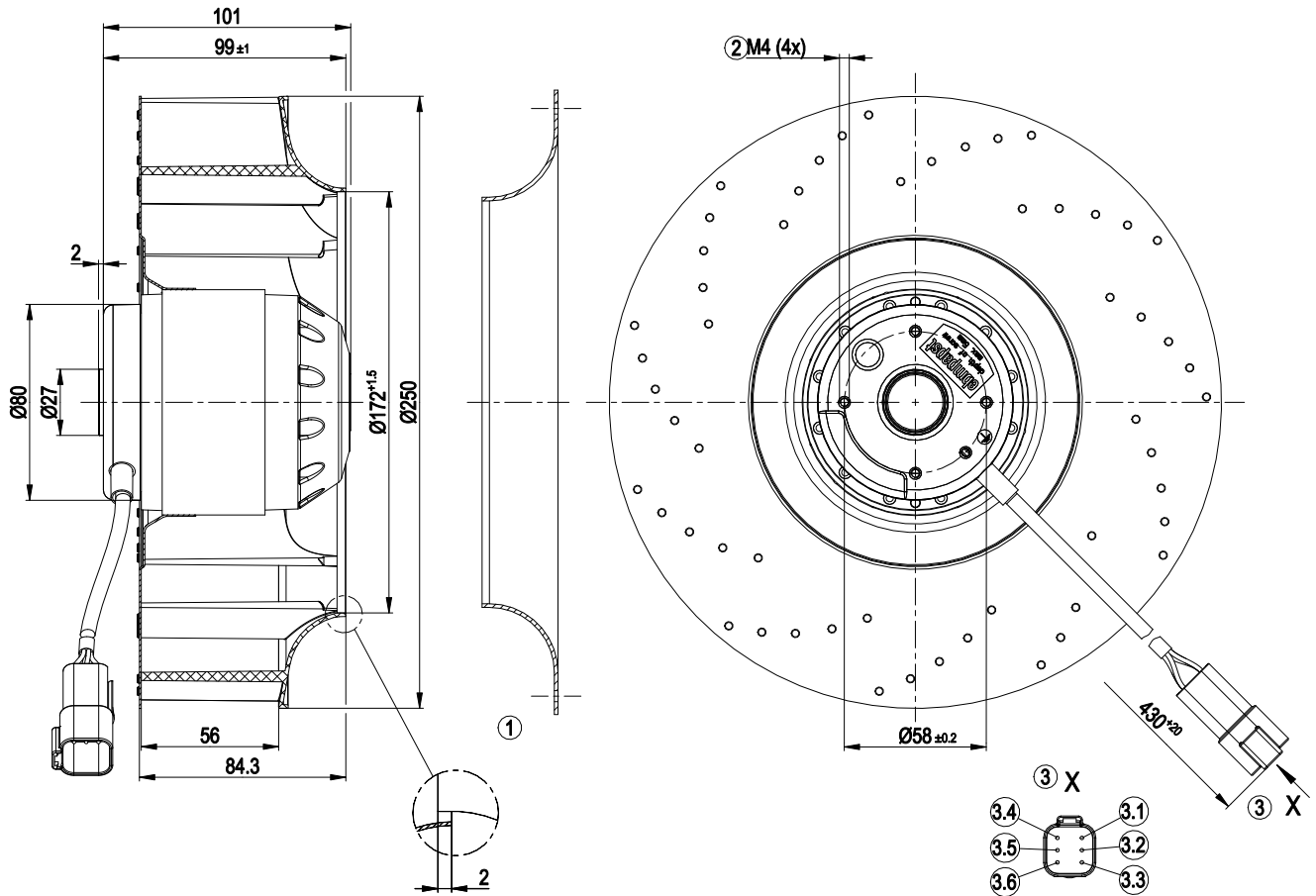
ml = Max. load · me = Max. efficiency · fa = Running at free air · cs = Customer specs · cu = Customer unit  
Subject to alterations



### Technical features

Mass	2.9 kg
Size	250 mm
Surface of rotor	Coated in black
Material of impeller	PA plastic
Number of blades	11
Direction of rotation	Clockwise, seen on rotor
Type of protection	IP 44; Depending on installation and position as per EN 60034-5
Insulation class	"F"
Humidity (F)/environmental protection class (H)	F2-1
Max. permissible ambient motor temp. (transp./ storage)	+ 80 °C
Min. permissible ambient motor temp. (transp./storage)	- 40 °C
Mounting position	Shaft horizontal or rotor on bottom; rotor on top on request
Condensate discharge holes	Rotor-side
Operation mode	S1
Motor bearing	Ball bearing
Touch current acc. IEC 60990 (measuring network Fig. 4, TN system)	< 0.75 mA
Motor protection	Thermal overload protector (TOP) brought out, basic insulation
Cable exit	Lateral
Protection class	I (if protective earth is connected by customer)

## Product drawing



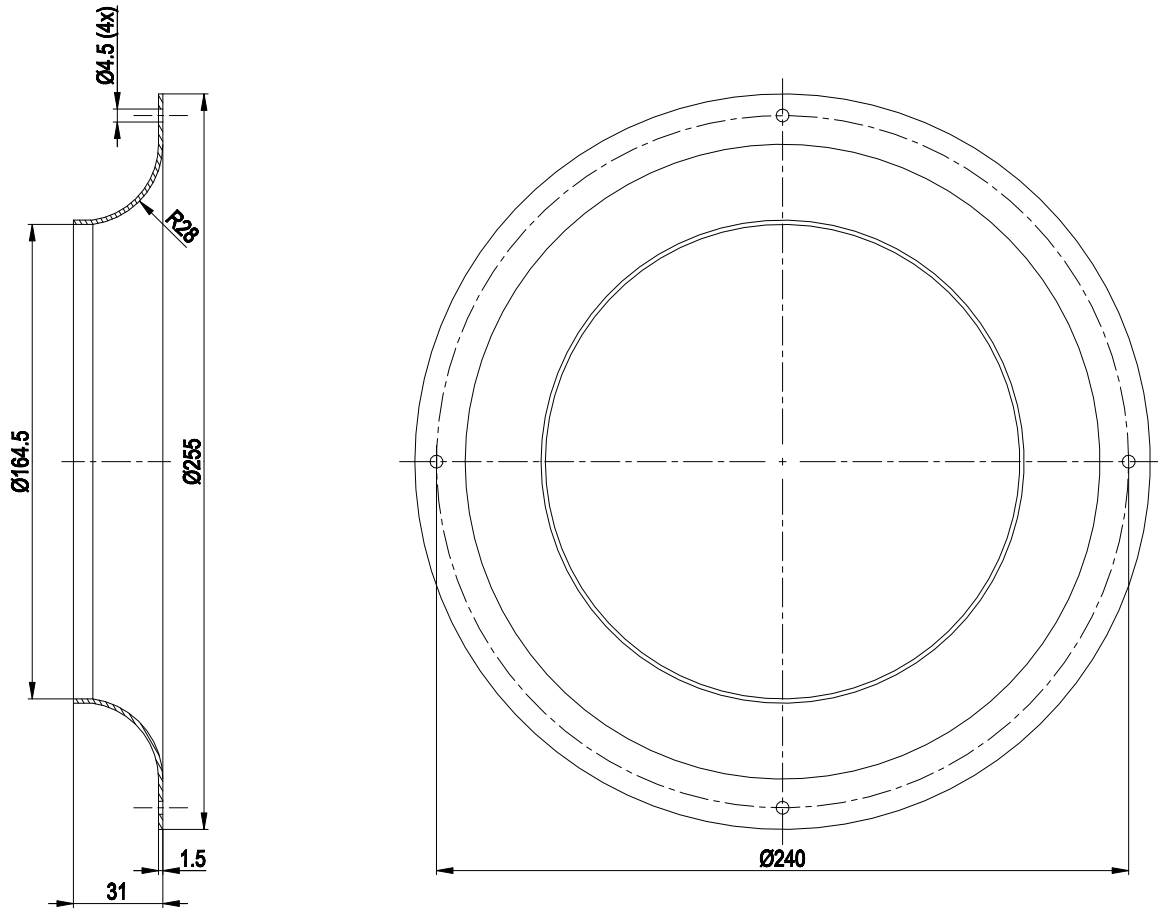
1	Accessory part: Inlet nozzle 96359-2-4013, not included in scope of delivery
2	Thread reach max. 5 mm
3	Connection line silicone 6G 0.5 mm <sup>2</sup> , 1x connector housing 6-pole DEUTSCH DT 04-6P, 5x plug pin DEUTSCH 1060-16-0622, 1x plug pin DEUTSCH 0460-264-16141
3.1	W1 (brown)
3.2	PE (green/yellow)
3.3	U1 (black)
3.4	TOP (grey)
3.5	V1 (blue)
3.6	TOP (grey)

# AC centrifugal fan

backward curved

Automotive

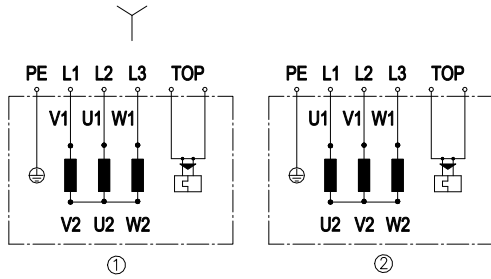
## Accessory part



Accessory part: Inlet nozzle 96359-2-4013 not included in scope of delivery



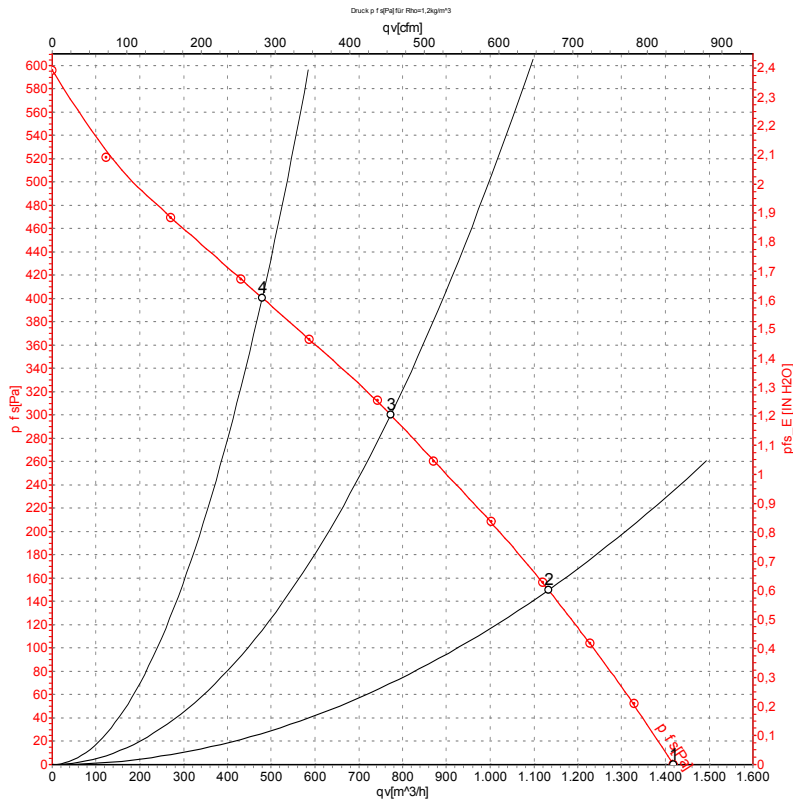
## Connection screen



Change direction of rotation by reversing two phases

	Three-phase motor
Y	Star connection
1	Anti-clockwise operation
L1	= V1 = blue
L2	= U1 = black
L3	= W1 = brown
2	Clockwise operation
L1	= U1 = black
L2	= V1 = blue
L3	= W1 = brown
PE	green/yellow
TOP	2x grey

## Charts: Air flow 50 Hz



Measurement: LU-44430-1

Air performance measured as per ISO 5801 Installation category A. For detailed information on the measuring set-up, please contact ebmpapst. Suction-side noise levels: LwA measured as per ISO 13347 / LpA measured with 1m distance to fan axis. The values given are valid under the measuring conditions mentioned above and may vary according to the actual installation situation. With any deviation from the standard set-up, the specific values have to be checked and reviewed with the unit installed.

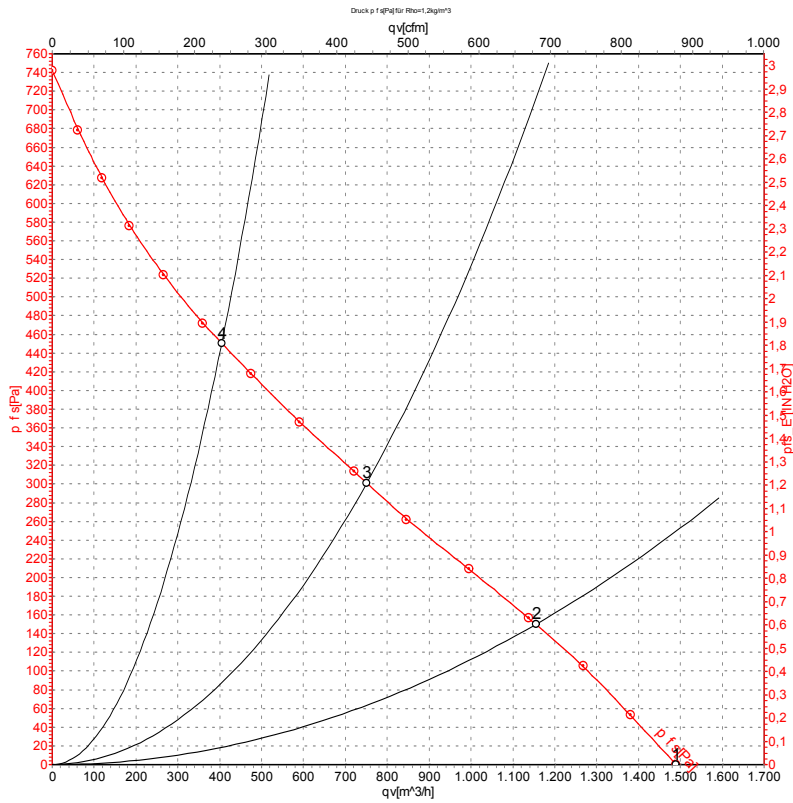
## Measured values

	U	f	n	P <sub>e</sub>	I	q <sub>v</sub>	P <sub>fs</sub>	q <sub>v</sub>	P <sub>fs</sub>
	V	Hz	min <sup>-1</sup>	W	A	m <sup>3</sup> /h	Pa	cfm	inH2O
1	400	50	2550	150	0.24	1420	0	835	0.00
2	400	50	2445	180	0.29	1135	150	665	0.60
3	400	50	2365	198	0.32	775	300	455	1.20
4	400	50	2440	178	0.28	480	400	285	1.61

U = Supply voltage · f = Frequency · n = Speed (rpm) · P<sub>e</sub> = Power input · I = Current draw · q<sub>v</sub> = Air flow · P<sub>fs</sub> = Pressure increase



## Charts: Air flow 60 Hz



Measurement: LU-44431-1

Air performance measured as per ISO 5801 Installation category A. For detailed information on the measuring set-up, please contact ebmpapst. Suction-side noise levels: L<sub>wA</sub> measured as per ISO 13347 / L<sub>pA</sub> measured with 1m distance to fan axis. The values given are valid under the measuring conditions mentioned above and may vary according to the actual installation situation. With any deviation from the standard set-up, the specific values have to be checked and reviewed with the unit installed.

## Measured values

	U	f	n	P <sub>e</sub>	I	q <sub>v</sub>	p <sub>fs</sub>	q <sub>v</sub>	p <sub>fs</sub>
	V	Hz	min <sup>-1</sup>	W	A	m <sup>3</sup> /h	Pa	cfm	inH <sub>2</sub> O
1	400	60	2700	215	0.33	1490	0	875	0.00
2	400	60	2485	248	0.39	1155	150	680	0.60
3	400	60	2350	265	0.41	750	300	440	1.20
4	400	60	2545	234	0.36	405	450	240	1.81

U = Supply voltage · f = Frequency · n = Speed (rpm) · P<sub>e</sub> = Power input · I = Current draw · q<sub>v</sub> = Air flow · p<sub>fs</sub> = Pressure increase

