

# AC centrifugal fan - RadiCal

backward curved, single inlet

for railway applications

R2D190-RA08-14 ebmpapst Datasheet

sales@fansco.com

www.fansco.com

Limited partnership · Headquarters Mulfingen  
County court Stuttgart · HRA 590344

General partner Elektrobau Mulfingen GmbH · Headquarters Mulfingen  
County court Stuttgart · HRB 590142

## Nominal data

Type	R2D190-RA08-14				
Motor	M2D068-BF				
Phase		3~	3~	3~	3~
Nominal voltage	VAC	230	230	400	400
Connection		Δ	Δ	Y	Y
Frequency	Hz	50	60	50	60
Type of data definition		ml	ml	ml	ml
Valid for approval / standard		CE	CE	CE	CE
Speed (rpm)	min <sup>-1</sup>	2340	2420	2340	2420
Power input	W	50	60	50	60
Current draw	A	0.18	0.18	0.1	0.1
Min. back pressure	Pa	0	0	0	0
Min. ambient temperature	°C	-25	-25	-25	-25
Max. ambient temperature	°C	80	80	80	80
Starting current	A	0.19	0.17	0.19	0.17

ml = Max. load · me = Max. efficiency · fa = Running at free air · cs = Customer specs · cu = Customer unit  
Subject to alterations



# AC centrifugal fan - RadiCal

backward curved, single inlet

for railway applications

## Technical features

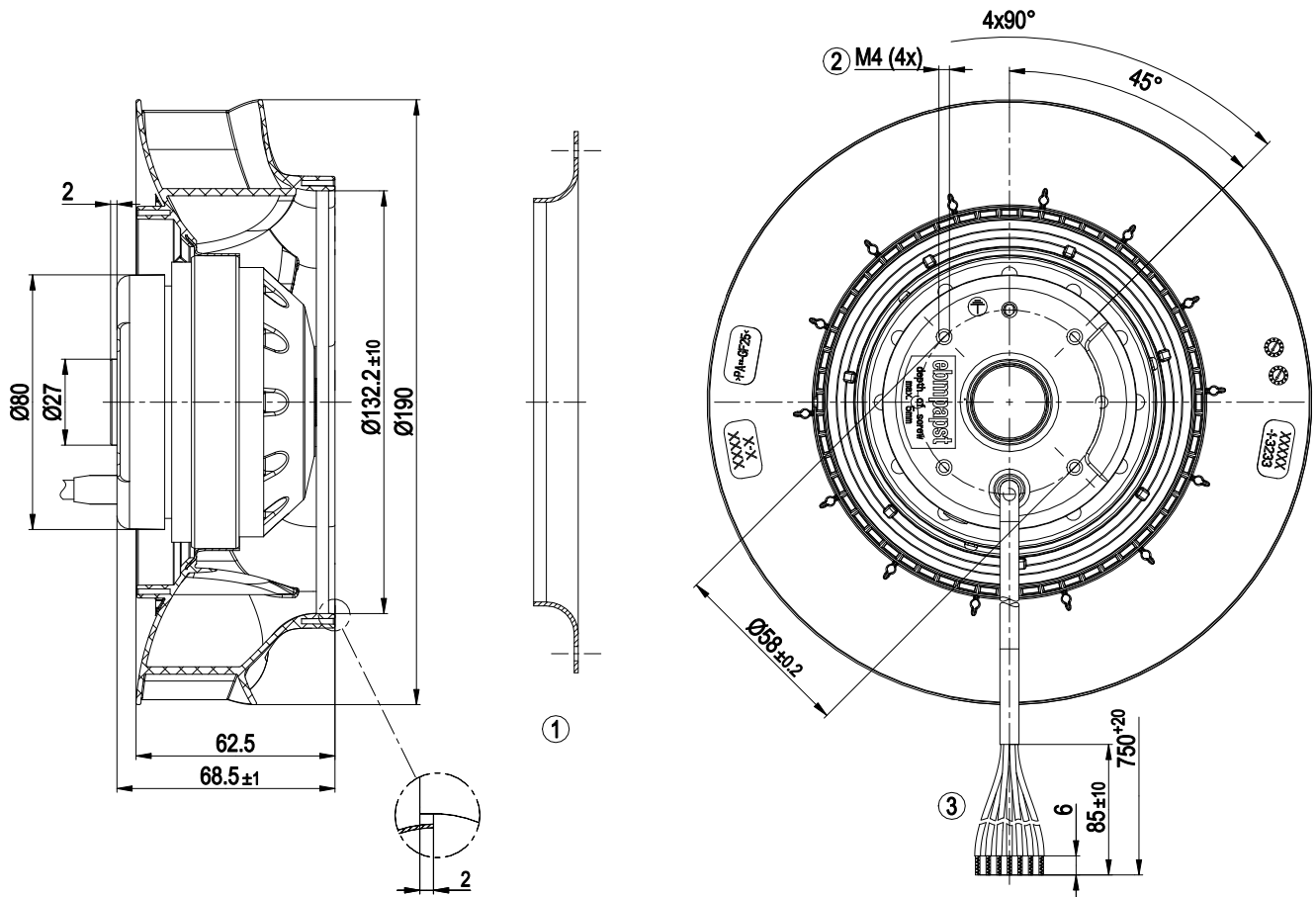
<b>Mass</b>	2.1 kg
<b>Size</b>	190 mm
<b>Surface of rotor</b>	Coated in black
<b>Material of impeller</b>	Plastic PA, round sheet-metal plate coated in black
<b>Number of blades</b>	7
<b>Direction of rotation</b>	Clockwise, seen on rotor
<b>Type of protection</b>	IP 44; Depending on installation and position
<b>Insulation class</b>	"F"
<b>Humidity (F)/environmental protection class (H)</b>	F5
<b>Max. permissible ambient motor temp. (transp./ storage)</b>	+ 80 °C
<b>Min. permissible ambient motor temp. (transp./storage)</b>	- 40 °C
<b>Mounting position</b>	Rotor on bottom
<b>Condensate discharge holes</b>	Rotor-side
<b>Operation mode</b>	S1
<b>Motor bearing</b>	Ball bearing
<b>Touch current acc. IEC 60990 (measuring network Fig. 4, TN system)</b>	< 0.75 mA
<b>Motor protection</b>	Thermal overload protector (TOP) brought out, basic insulation
<b>Cable exit</b>	Axial
<b>Protection class</b>	I (if protective earth is connected by customer)
<b>Product conforming to standard</b>	EN 45545-2, R22/R23, HL3: 2013; IEC 61373: 2010



# AC centrifugal fan - RadiCal

backward curved, single inlet  
for railway applications

## Product drawing



1	Accessory part: Inlet nozzle 09576-2-4013 not included in scope of delivery
2	Thread reach max. 5 mm
3	Connection line halogen-free, BETrans® GWK flex R, 9G 0.5 mm <sup>2</sup> , 9x crimped lead tips

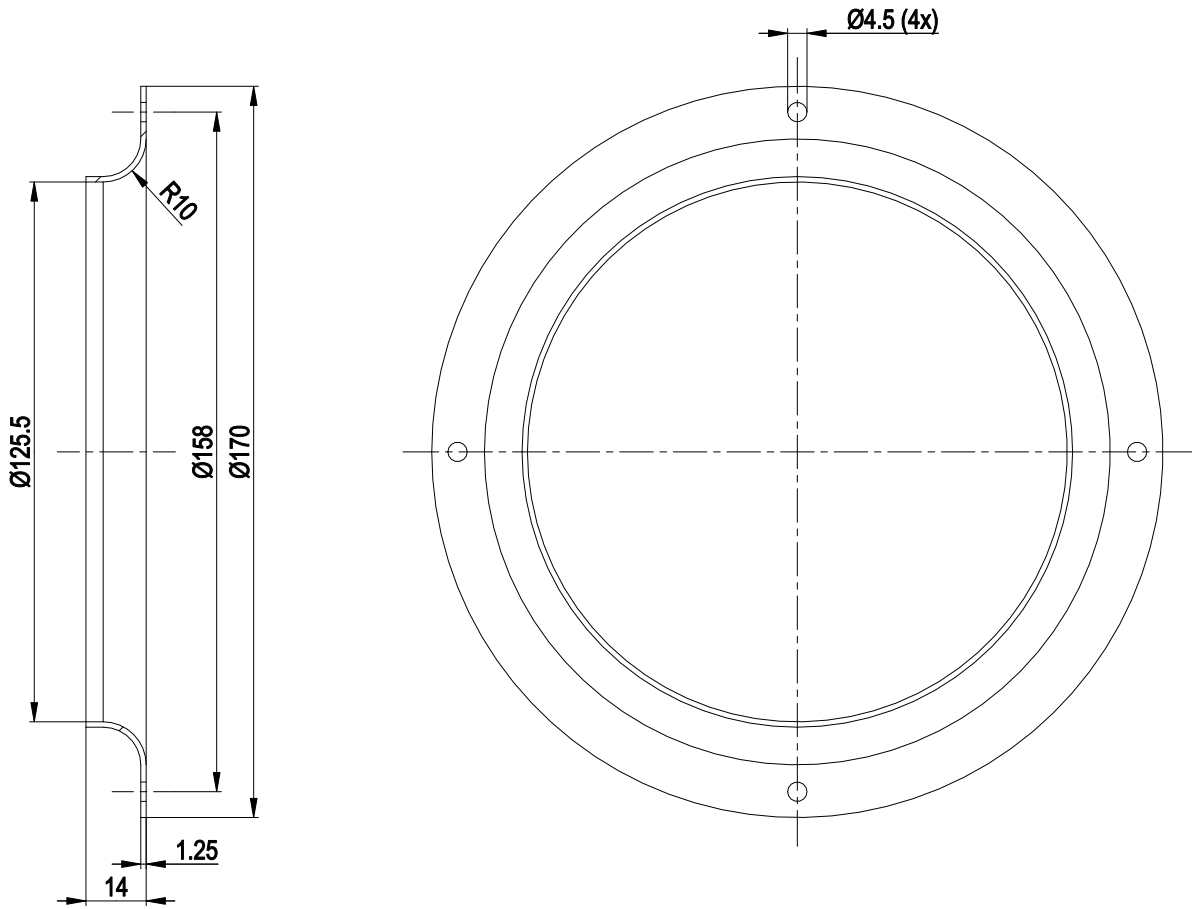


# AC centrifugal fan - RadiCal

backward curved, single inlet

for railway applications

## Accessory part



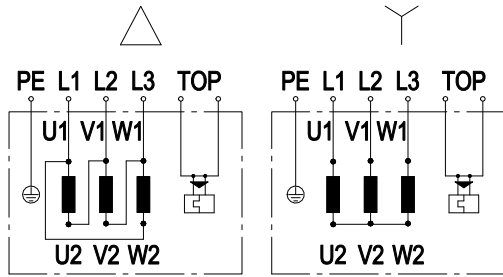
1 Accessory part: Inlet nozzle 09576-2-4013 not included in scope of delivery



# AC centrifugal fan - RadiCal

backward curved, single inlet  
for railway applications

## Connection screen



Note: Change in direction of rotation by reversing two phases

Δ	Delta connection	Y	Star connection	L1	black
L2	blue	L3	brown	U1	black
V1	blue	W1	brown	U2	green
V2	white	W2	yellow	TOP	2xgrey
PE	green/yellow				

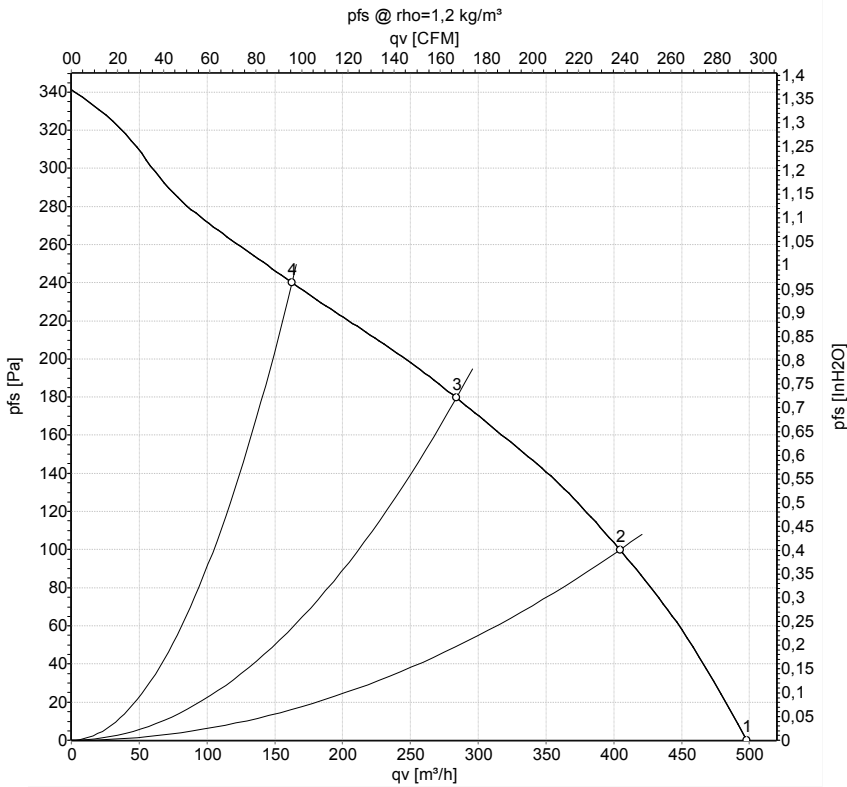


# AC centrifugal fan - RadiCal

backward curved, single inlet

for railway applications

## Charts: Air flow 50 Hz



Measurement: LU-160891-1

Air performance measured as per ISO 5801 Installation category A. For detailed information on the measuring set-up, please contact ebm-papst. Suction-side noise levels: LwA measured as per ISO 13347 / LpA measured with 1m distance to fan axis. The values given are valid under the measuring conditions mentioned above and may vary according to the actual installation situation. With any deviation from the standard set-up, the specific values have to be checked and reviewed with the unit installed.

## Measured values

	Conn.	U	f	n	P <sub>e</sub>	I	q <sub>v</sub>	P <sub>fs</sub>	q <sub>v</sub>	P <sub>fs</sub>
		V	Hz	min <sup>-1</sup>	W	A	m <sup>3</sup> /h	Pa	cfm	in. wg
1	Y	400	50	2470	43	0.09	500	0	295	0.00
2	Y	400	50	2405	46	0.09	405	100	240	0.40
3	Y	400	50	2340	50	0.10	285	180	165	0.72
4	Y	400	50	2420	45	0.09	165	240	95	0.96

Conn. = Connection · U = Supply voltage · f = Frequency · n = Speed (rpm) · P<sub>e</sub> = Power input · I = Current draw · q<sub>v</sub> = Air flow · p<sub>e</sub> = Pressure increase

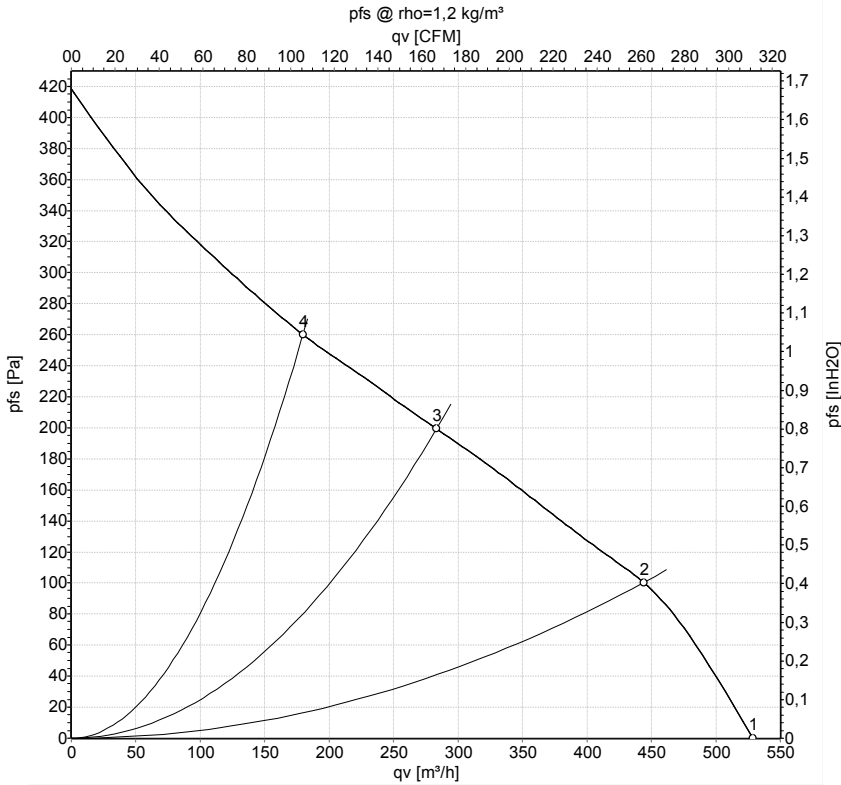


# AC centrifugal fan - RadiCal

backward curved, single inlet

for railway applications

## Charts: Air flow 60 Hz



Measurement: LU-160952-1

Air performance measured as per ISO 5801 Installation category A. For detailed information on the measuring set-up, please contact ebm-papst. Suction-side noise levels: L<sub>wA</sub> measured as per ISO 13347 / L<sub>pA</sub> measured with 1m distance to fan axis. The values given are valid under the measuring conditions mentioned above and may vary according to the actual installation situation. With any deviation from the standard set-up, the specific values have to be checked and reviewed with the unit installed.

## Measured values

	Conn.	U	f	n	P <sub>e</sub>	I	q <sub>v</sub>	P <sub>fs</sub>	q <sub>v</sub>	P <sub>fs</sub>
		V	Hz	min <sup>-1</sup>	W	A	m <sup>3</sup> /h	Pa	cfm	in. wg
1	Y	400	60	2615	53	0.09	530	0	310	0.00
2	Y	400	60	2530	56	0.09	445	100	260	0.40
3	Y	400	60	2420	60	0.10	285	200	165	0.80
4	Y	400	60	2525	55	0.09	180	260	105	1.04

Conn. = Connection · U = Supply voltage · f = Frequency · n = Speed (rpm) · P<sub>e</sub> = Power input · I = Current draw · q<sub>v</sub> = Air flow · p<sub>fs</sub> = Pressure increase

