

R1G250-AQ37-52

EC centrifugal fan

backward-curved, single-intake



R1G250-AQ37-52 ebmpapst Datasheet

sales@fansco.com

www.fansco.com

Nominal data

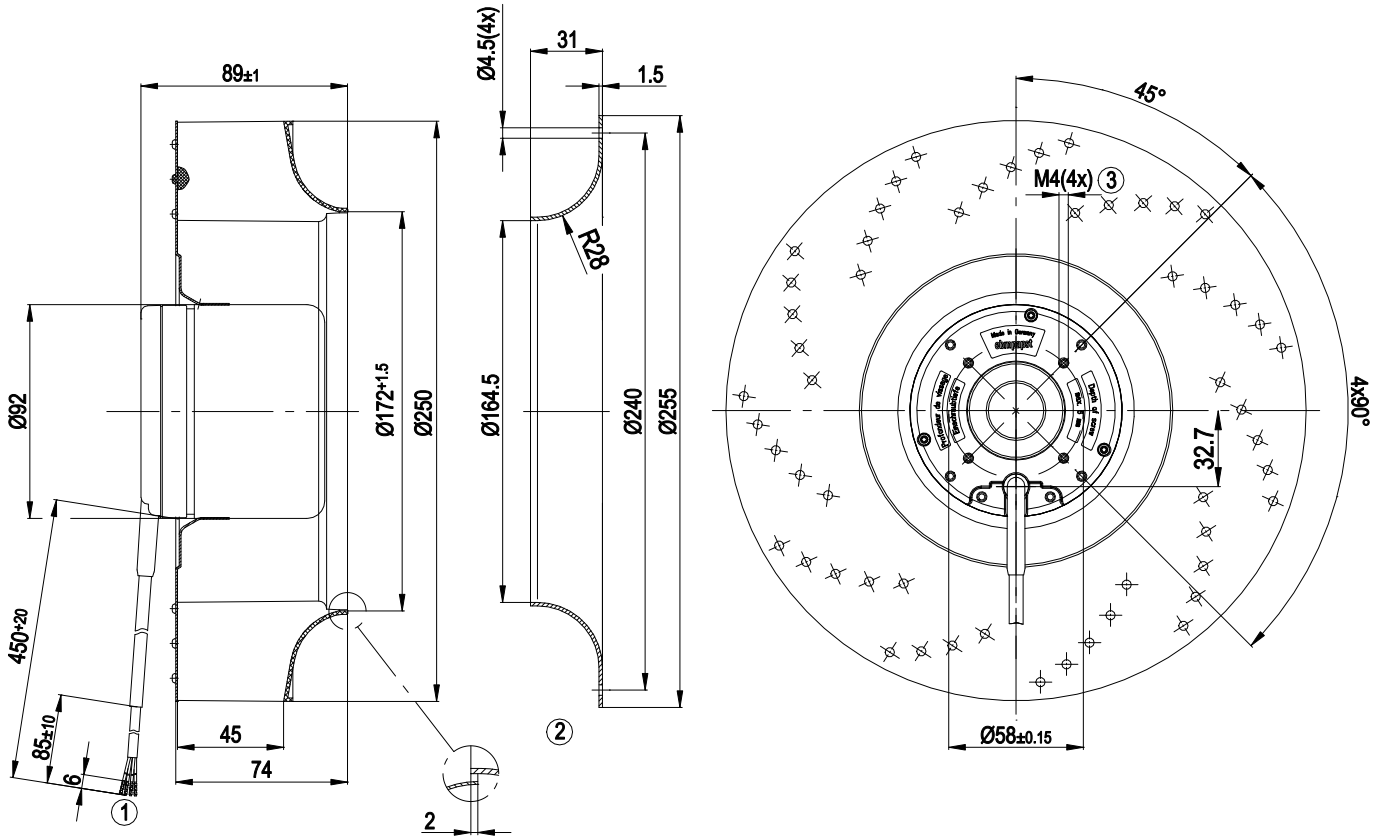
Type	R1G250-AQ37-52	
Motor	M1G074-CF	
Nominal voltage	VDC	48
Nominal voltage range	VDC	36 .. 57
Method of obtaining data		fa
Speed (rpm)	min ⁻¹	2600
Power consumption	W	105
Current draw	A	2.55
Min. ambient temperature	°C	-25
Max. ambient temperature	°C	60

ml = Max. load · me = Max. efficiency · fa = Free air · cs = Customer specification · ce = Customer equipment
Subject to change

Technical description

Weight	2 kg
Size	250 mm
Motor size	74
Rotor surface	Painted black
Impeller material	PA66 plastic, glass-fiber reinforced
Number of blades	11
Direction of rotation	Clockwise, viewed toward rotor
Degree of protection	IP42
Insulation class	"B"
Moisture (F) / Environmental (H) protection class	H0 - dry environment
Max. permitted ambient temp. for motor (transport/storage)	+80 °C
Min. permitted ambient temp. for motor (transport/storage)	-40 °C
Installation position	Any
Condensation drainage holes	None
Mode	S1
Motor bearing	Ball bearing
Technical features	<ul style="list-style-type: none"> - Tach output - Motor current limitation - Soft start - Control input 0-10 VDC / PWM - Reverse polarity protection
With cable	Variable
Protection class assignment	The built-in component has several local protection class assignments. The final protection class is determined by the intended installation.
Conformity with standards	EN 62368-1
Comment on CE	Codesign Directive 2009/125/EC + Fan Directive (EC) No. 327/2011 does not apply, as power consumption <125W.
Approval	EAC; UL 1004-1; CSA C22.2 No. 77; CCC

Product drawing

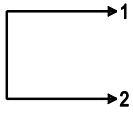


1	Cable AWG 20, 4x crimped splices
2	Accessory part: inlet ring 96359-2-4013 not included in scope of delivery; other inlet rings on request
3	Max. clearance for screw 6 mm

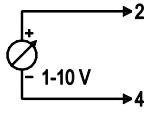
Connection diagram

Customer circuit

Full speed

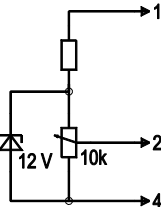


Adjustable speed

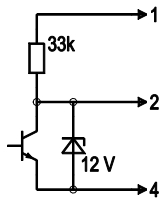


10 V → n = max
1 V → n = min
< 1 V → n = 0
Safe start at Unom -30% from 4 V Ucontr.

Speed adjustable via potentiometer

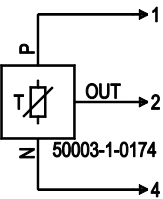


Speed adjustable via PWM 1-10 kHz



100% PWM → n = max
10% PWM → n = min
< 10% PWM → n = 0
Safe start at Unom -30% from 40% PWM

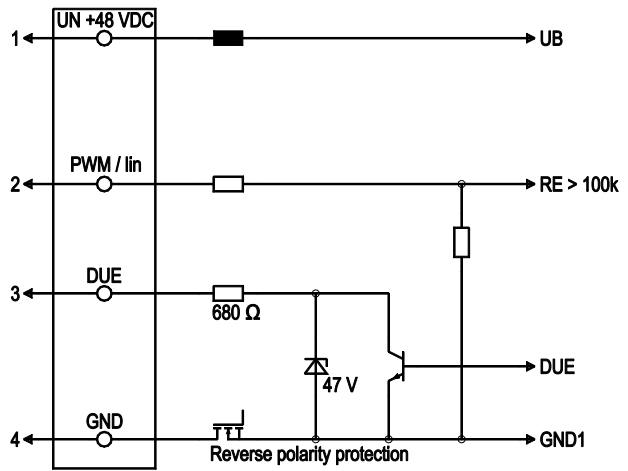
Set value requirement via ebrm-papst temperature controller



T < 10 °C → n = 0
T > 45 °C → n = max

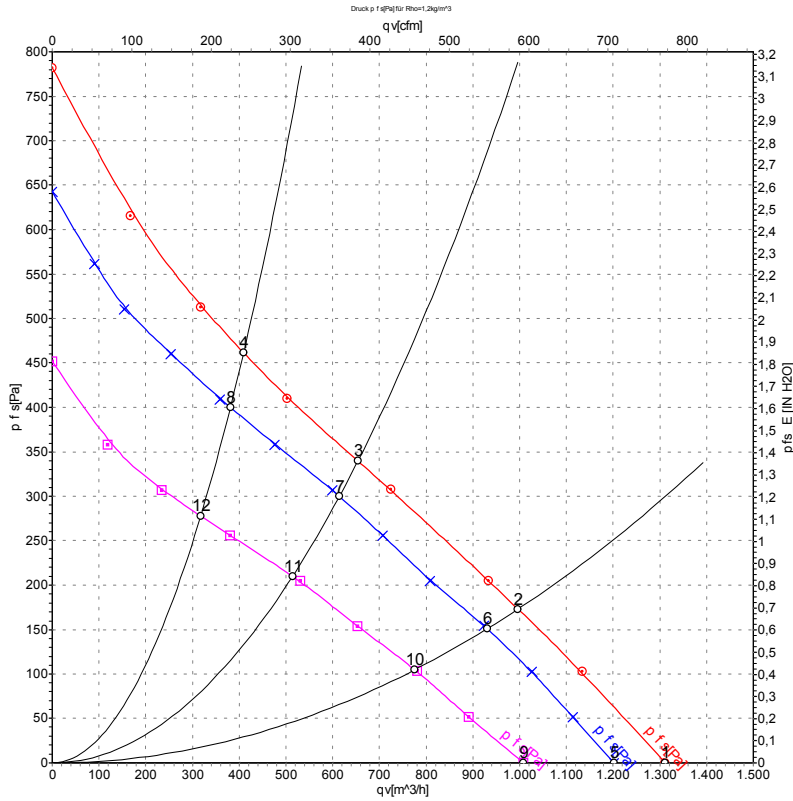
Connection

Fan / Motor



No.	Conn.	Designation	Color	Function/assignment
1	1	Un +48 VDC	red	Power supply 48 VDC, maximum ripple 3.5%
1	2	PWM / lin	yellow	PWM / lin. Control input 0-10 V
1	3	Tach	white	Tach output, 3 pulses per revolution, Isink max = 10 mA
1	4	GND	blue	Reference ground

Curves: Air performance



Measurement: LU-47074-1
Date: 2001-01-17

Measurement: LU-47073-1
Date: 2001-01-17
Nozzle: 96359-2-4013

Measurement: LU-47075-1
Date: 2001-01-17

Air performance measured according to ISO 5801 installation category A. For detailed information on the measurement setup, contact ebmpapst. Intake sound level: Sound power level according to ISO 13347 / sound pressure level measured at 1 m distance from fan axis. The values given are valid under the specified measuring conditions and may vary due to conditions of installation. For deviations from the standard configuration, the parameters have to be checked on the installed unit.

Measured values

	U	n	P _{ed}	I	q _v	p _{fs}	q _v	p _{fs}
	V	min ⁻¹	W	A	m ³ /h	Pa	cfm	in. wg
1	56	2850	134	2.78	1310	0	770	0.00
2	56	2625	139	2.93	995	173	585	0.69
3	56	2550	141	2.98	655	340	385	1.36
4	56	2650	138	2.91	410	461	240	1.85
5	48	2600	105	2.55	1200	0	705	0.00
6	48	2450	114	2.74	930	150	545	0.60
7	48	2380	116	2.81	615	300	360	1.20
8	48	2460	113	2.71	380	400	225	1.61
9	36	2180	60	1.94	1010	0	595	0.00
10	36	2040	67	2.16	775	106	455	0.43
11	36	2005	70	2.24	515	210	305	0.84
12	36	2060	66	2.13	320	278	185	1.12

U = Voltage · n = Speed (rpm) · P_{ed} = Power consumption · I = Current draw · q_v = Air flow · p_{fs} = Pressure increase