

R1G133-AA17-26 ebmpapst Datasheet

Sales@fansco.com

www.fansco.com

Phone: +49 7938 81-0

Fax: +49 7938 81-110

Nominal data

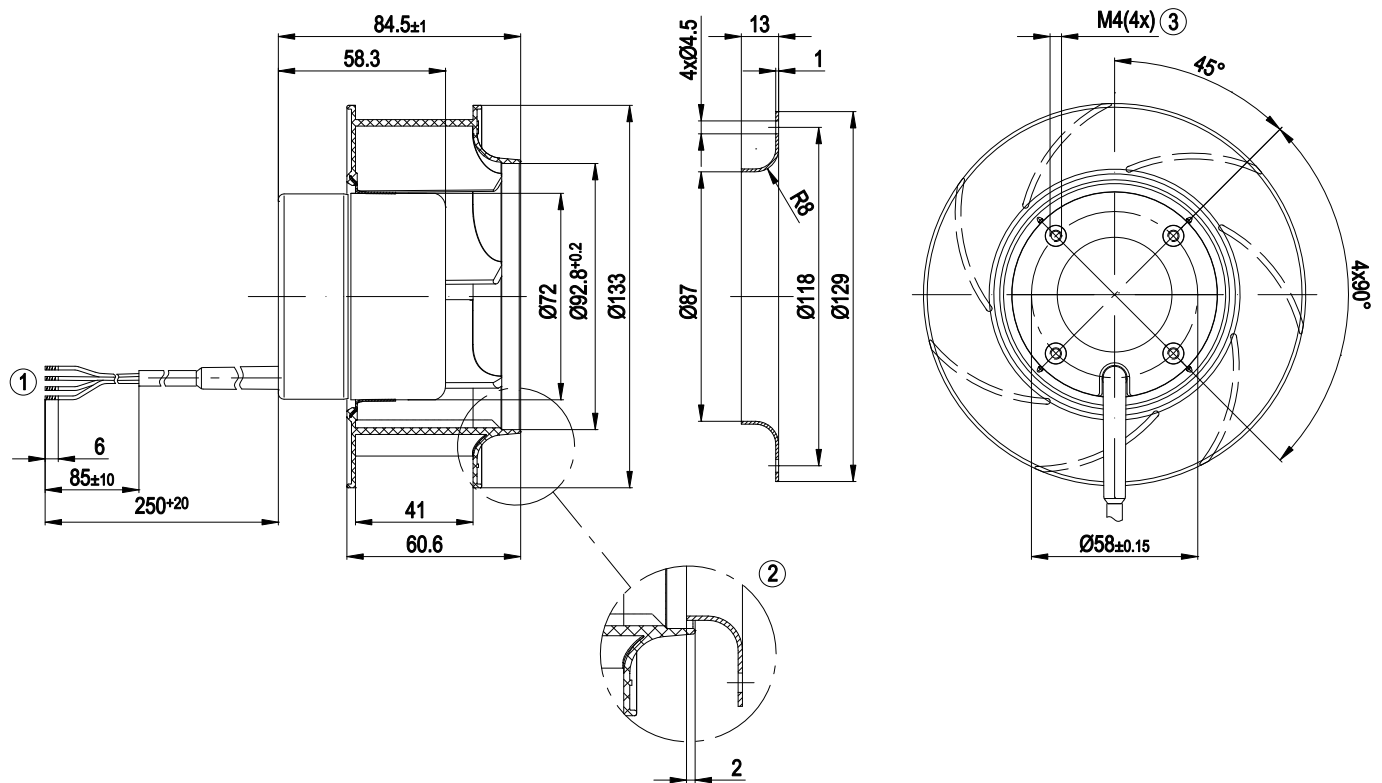
Type	R1G133-AA17-26	
Motor	M1G055-BD	
Nominal voltage	[VDC]	24
Nominal voltage range	[VDC]	16 .. 28
Type of data definition		rfa
Speed	[min ⁻¹]	3850
Power input	[W]	30
Current draw	[A]	1.4
Min. ambient temperature	[°C]	- 25
Max. ambient temperature	[°C]	+60

ml = max. load · me = max. efficiency · rfa = running at free air · cs = customer specs · cu = customer unit
Subject to alterations

Technical features

Leakage current	<= 0,25 mA
Size	133 mm
Operation mode	S1
Direction of rotation	Clockwise, seen on rotor
Mounting position	Any
EMC interference emission	Acc. to EN 61000-6-3
EMC interference immunity	Acc. to EN 61000-6-2
Insulation class	"B"
Cable exit	Variable
Condensate discharge holes	None
Bearing motor	Ball bearing
Mass	0.7 kg
Material of impeller	Plastic PA66, fibreglass-reinforced, round sheet-metal plate coated in black
Motor protection	Reverse polarity and locked-rotor protection
Surface of rotor	Coated in black
Number of blades	7
Type of protection	IP 44 - depending on position
Technical features	<ul style="list-style-type: none"> - Control input 0-10 VDC / PWM - Tach output - Motor current limit - Soft start
Max. permissible ambient motor temp. (transp./ storage)	+80 °C
Min. permissible ambient motor temp. (transp./storage)	-40 °C

Product drawing

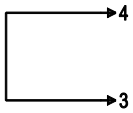


1	Connection line AWG20; 4 x brass lead tips crimped
2	Accessory part: Inlet nozzle 09566-2-4013, not included in the standard scope of delivery
3	Depth of screw max. 6 mm

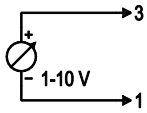
Connection screen

Customer circuit

Full speed

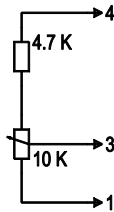


Speed setting

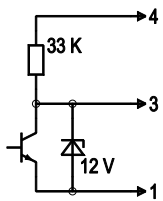


10 V → n = max
1 V → n = min
<1 V → n = 0
Safe start-up at Unom -30 %
from 4 V Ucontr.

Speed setting with fixed resistance

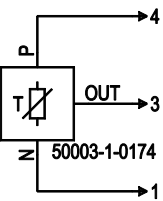


Speed setting via PWM 1-10 kHz



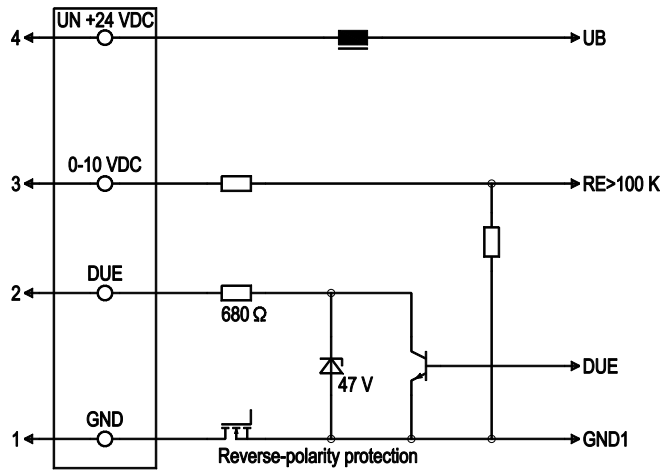
100 % PWM → n = max
10 % PWM → n = min
<10 % PWM → n = 0
Safe start-up at Unom -30 %
from 40 % PWM

Setting of values via temperature controller



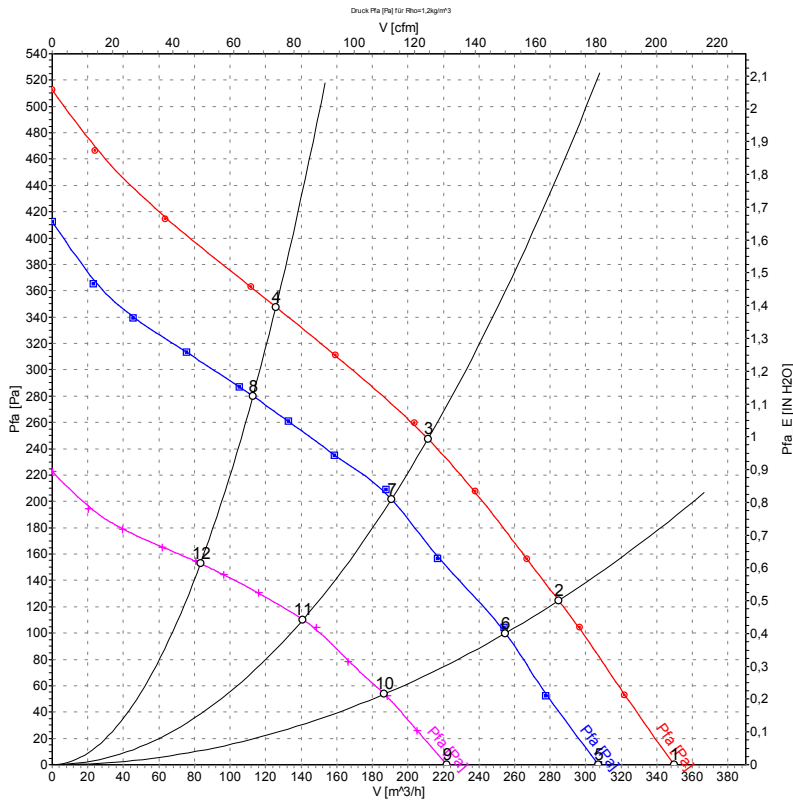
Connection

Fan / motor



Line	No.	Signal	Colour	Function / assignment
1	1	GND	blue	Reference mass
1	2	DUE	white	Speed monitoring output, 2 pulses per rotation, Isink max = 10 mA
1	3	0-10 VDC	yellow	Control input Re > 100 K
1	4	Un +24 VDC	red	Power supply 24 VDC, residual ripple 3.5 %

Charts: Air flow



Measurement: LU-57330
 Measurement: LU-57328
 Measurement: LU-57329

Measured values

	U	n	P ₁	I	\hat{V}	p _{fa}
	[V]	[min ⁻¹]	[W]	[A]	[m ³ /h]	[Pa]
1	28	4280	41	1.64	350	0
2	28	4195	43	1.72	285	125
3	28	4175	44	1.74	210	248
4	28	4340	40	1.58	125	348
5	24	3850	30	1.40	305	0
6	24	3750	32	1.48	255	100
7	24	3755	32	1.47	190	200
8	24	3880	29	1.36	115	280
9	16	2830	13	1.01	220	0
10	16	2785	14	1.05	185	54
11	16	2790	14	1.04	140	110
12	16	2855	13	0.99	85	153