

M4E068-EC01-51 ebmpapst Datasheet
 sales@fansco.com
 www.fansco.com

Limited partnership · Headquarters Muldingen
 County court Stuttgart · HRA 590344

General partner Elektrobau Muldingen GmbH · Headquarters Muldingen
 County court Stuttgart · HRB 590142

Nominal data

Type	M4E068-EC01-51		
Motor	M4E068-EC		
Phase		1~	1~
Nominal voltage	VAC	230	230
Frequency	Hz	50	60
Type of data definition		me	me
Valid for approval / standard		CE	CE
Speed	min ⁻¹	1200	1500
Power input	W	120	95
Power output	W	60	55
Current draw	A	0.52	0.46
Rated torque	Ncm	48	35
Medium start-up torque	Ncm	33	22
Motor capacitor	µF	4	3
Capacitor voltage	VDB	450	450
Capacitor standard			P0 (CE)
Min. ambient temperature	°C	-25	-25
Max. ambient temperature	°C	40	40
Starting current	A	0.64	0.55

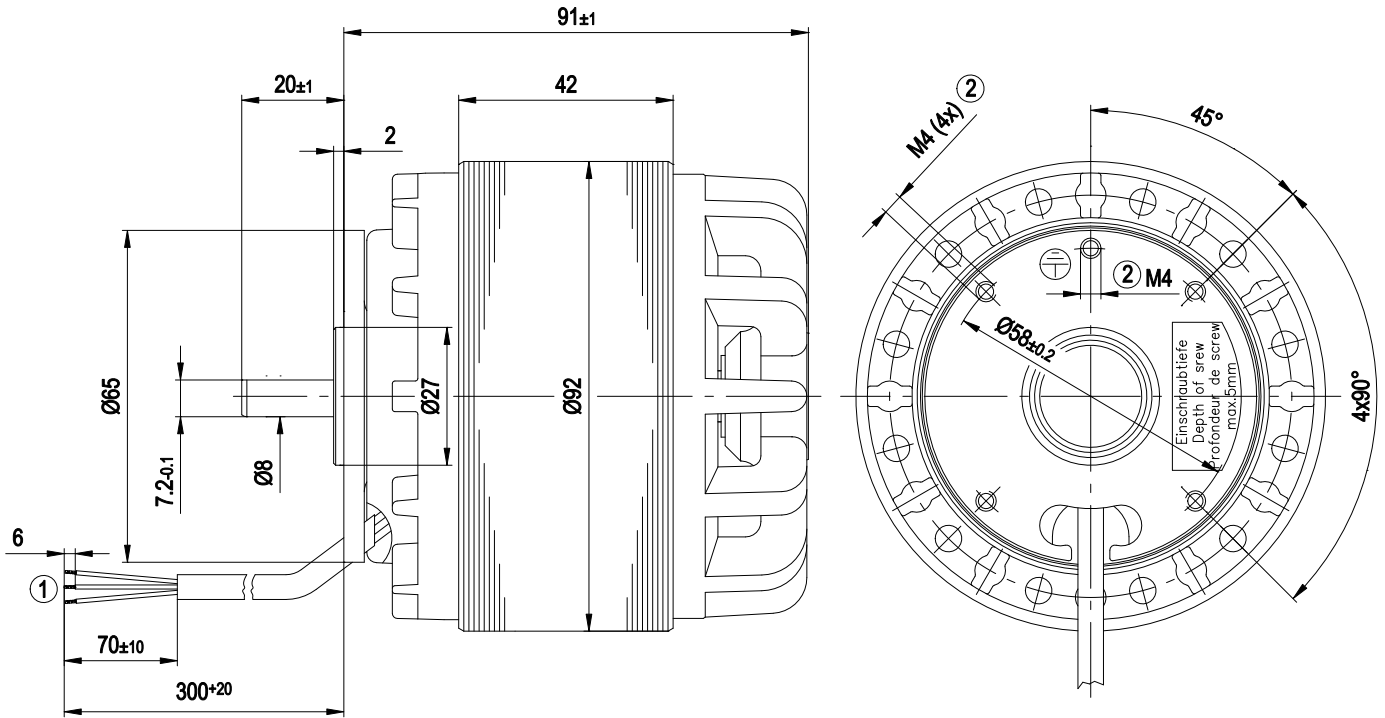
ml = max. load · me = max. efficiency · fa = running at free air · cs = customer specs · cu = customer unit
 Subject to alterations



Technical features

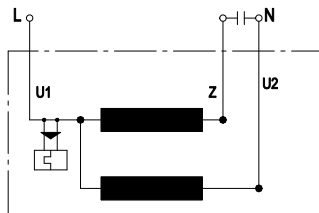
Mass	2.1 kg
Size	68 mm
Surface of rotor	Rotor open, coated in black
Direction of rotation	Counter-clockwise, seen on rotor
Type of protection	IP 10
Insulation class	"B"
Humidity class	F0
Max. permissible ambient motor temp. (transp./ storage)	+ 80 °C
Min. permissible ambient motor temp. (transp./storage)	- 40 °C
Mounting position	Any
Condensate discharge holes	None, open rotor
Operation mode	S1
Motor bearing	Ball bearing
Touch current acc. IEC 60990 (measuring network Fig. 4, TN system)	< 0.75 mA
Motor protection	Thermal overload protector (TOP) wired internally
Protection class	I (if protective earth is connected by customer)
Product conforming to standard	EN 60335-1; CE

Product drawing



1	Connection line PVC 3X 0.5 mm ² ; 3x brass lead tips crimped
2	Depth of screw max. 5 mm

Connection screen



U1	Blue	Z	brown	U2	black
----	------	---	-------	----	-------



Charts: Speed

