

M4D094-HA22-11 ebmpapst Datasheet
 sales@fansco.com
 www.fansco.com

Limited partnership · Headquarters Muldingen
 County court Stuttgart · HRA 590344

General partner Elektrobau Muldingen GmbH · Headquarters Muldingen
 County court Stuttgart · HRB 590142

Nominal data

Type	M4D094-HA22-11	
Motor	M4D094-HA	
Phase		3~
Nominal voltage	VAC	400
Connection		Δ
Frequency	Hz	50
Type of data definition		ml
Valid for approval / standard		CE
Speed	min ⁻¹	1415
Power input	W	515
Power output	W	330
Current draw	A	1.41
Rated torque	Ncm	225
Medium start-up torque	Ncm	900
Min. ambient temperature	°C	-40
Max. ambient temperature	°C	-
Starting current	A	5.0

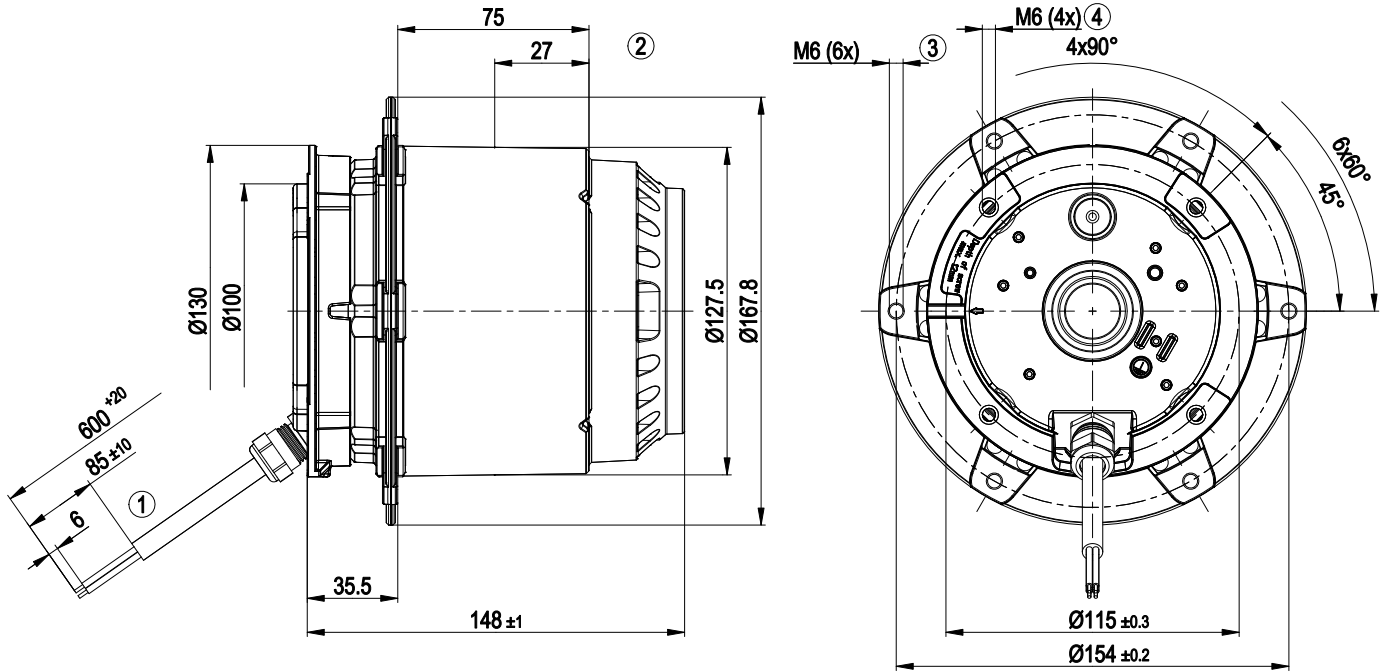
ml = max. load · me = max. efficiency · fa = running at free air · cs = customer specs · cu = customer unit
 Subject to alterations



Technical features

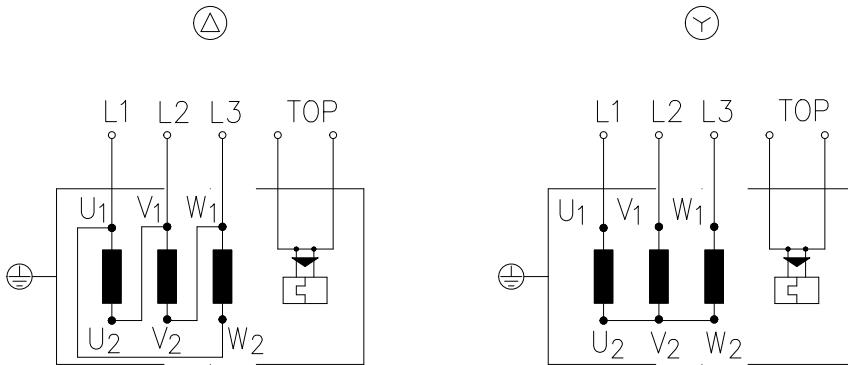
Mass	6.9 kg
Size	94 mm
Surface of rotor	Coated in black
Direction of rotation	Clockwise, seen on rotor
Type of protection	IP 54
Insulation class	"F"
Humidity class	F4-1
Max. permissible ambient motor temp. (transp./ storage)	+80 °C
Min. permissible ambient motor temp. (transp./storage)	-40 °C
Mounting position	Any
Condensate discharge holes	None
Operation mode	S1
Motor bearing	Ball bearing
Touch current acc. IEC 60990 (measuring network Fig. 4, TN system)	<= 3.5 mA
Motor protection	Thermal overload protector (TOP) brought out
Cable exit	Variable
Protection class	I (if protective earth is connected by customer)
Product conforming to standard	EN 60034-1 (2004); CE
Approval	CCC

Product drawing



1	Connection line silicone 6G 0.5 mm ² , 6x crimped core-end sleeves
2	Cylindrical clamping range
3	Depth of screw min. 7 mm
4	Depth of screw max. 12 mm

Connection screen



Changing the direction of rotation by reversing the two phases

Δ	Delta connection	Y	Star connection	L1	= U1 = black
L2	= V1 = blue	L3	= W1 = brown	W2	yellow
U2	green	V2	white	TOP	2 x grey
PE	green / yellow				

Charts: Speed

