

M3G055-CF25-37 ebmpapst Datasheet

sales@fansco.com

www.fansco.com

Limited partnership · Headquarters Muldingen
 County court Stuttgart · HRA 590344

General partner Elektrobau Muldingen GmbH · Headquarters Muldingen
 County court Stuttgart · HRB 590142

Nominal data

Type	M3G055-CF25-37	
Motor	M3G055-CF	
Phase		1~
Nominal voltage	VAC	115
Frequency	Hz	50/60
Type of data definition		ml
Speed	min ⁻¹	3030
Power input	W	84
Power output	W	63
Rated torque	Ncm	20
Min. ambient temperature	°C	-25
Max. ambient temperature	°C	45

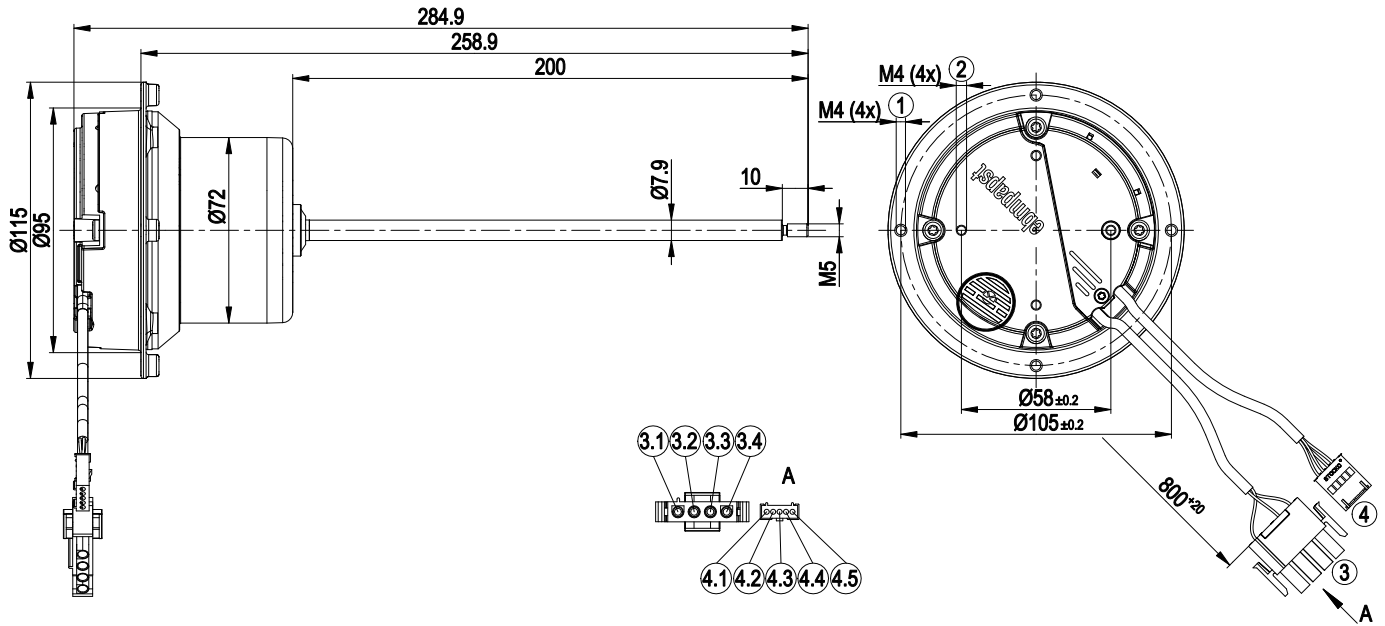
ml = max. load · me = max. efficiency · fa = running at free air · cs = customer specs · cu = customer unit
 Subject to alterations



Technical features

Mass	1.3 kg
Size	55 mm
Material of electronics housing	Die-cast aluminium
Direction of rotation	Counter-clockwise, seen on rotor
Type of protection	IP 44
Insulation class	"B"
Humidity class	F3-1
Max. permissible ambient motor temp. (transp./ storage)	+ 80 °C
Min. permissible ambient motor temp. (transp./storage)	- 40 °C
Mounting position	Any
Condensate discharge holes	Rotor-side
Operation mode	S1
Motor bearing	Ball bearing
Touch current acc. IEC 60990 (measuring network Fig. 4, TN system)	<= 3.5 mA
Electrical leads	With plug
Motor protection	Thermal overload protector (TOP) wired internally
Cable exit	Variable
Protection class	I (if protective earth is connected by customer)
Product conforming to standard	EN 60335-1
Approval	UL 2111

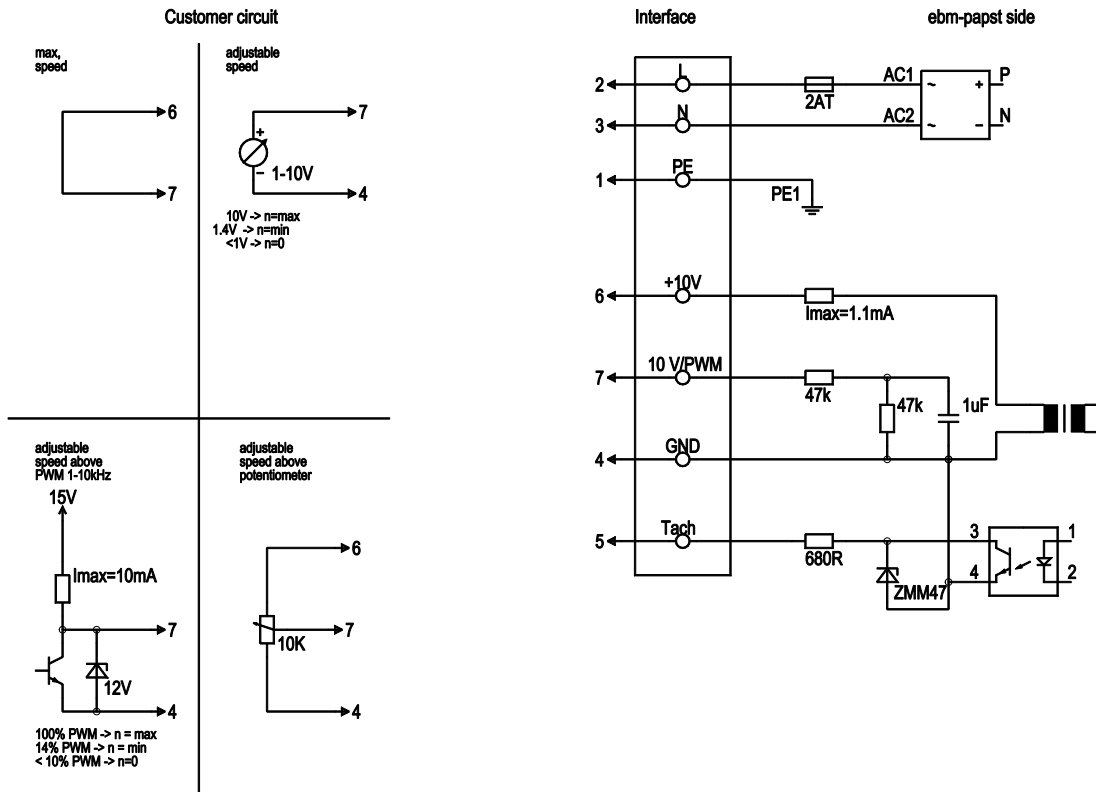
Product drawing



1	Depth of screw max. 5 mm
2	Depth of screw max. 5 mm
3	Connection line PVC 3G AWG20, AMP connector shell 350779-4 with 3x plug pin 926885-1
3.1	PE (green/yellow)
3.2	Not assigned
3.3	N (blue)
3.4	L (black)
4	Connection line PVC 4X AWG22, 1x connector shell Stocko MKH 5135-1-0-500
4.1	Not assigned
4.2	Tach (white)
4.3	GND (blue)
4.4	0-10V / PWM (yellow)
4.5	+10V (red)



Connection screen



Line	No.	Signal	Colour	Function / assignment
	1	PE	green/yellow	Protective earth
	2	L	brown	Power supply 115 VAC, 50-60 Hz, see type plate for voltage range
	3	N	blue	Neutral conductor
	4	GND	blue	GND - Connection for control interface
	5	Tach	white	Tach output: open collector, 1 pulse per revolution, electrically isolated
	6	10V/ max. 1,1mA	red	Voltage output 10 V/ 1.1 mA, electrically isolated
	7	0-10V PWM	yellow	Control input 0 - 10 V or PWM, electrically isolated



Charts: Speed

