

K3G310-BG08-J3 ebmpapst Datasheet

sales@fansco.com

www.fansco.com

Limited partnership · Headquarters Mulfingen
County court Stuttgart · HRA 590344General partner Elektrobau Mulfingen GmbH · Headquarters Mulfingen
County court Stuttgart · HRB 590142

Nominal data

Type	K3G310-BG08-J3	
Motor	M3G084-GF	
Phase		3~
Nominal voltage	VAC	400
Nominal voltage range	VAC	380 .. 480
Frequency	Hz	50/60
Type of data definition		ml
Speed (rpm)	min ⁻¹	2860
Power input	W	1300
Current draw	A	2.0
Min. ambient temperature	°C	-25
Max. ambient temperature	°C	55

ml = Max. load · me = Max. efficiency · fa = Running at free air · cs = Customer specs · cu = Customer unit
Subject to alterations

Data according to ErP directive

		Actual	Request 2015			
01 Overall efficiency η_{es}	%	66.4	52.7	09 Power input P_{ed}	kW	1.3
02 Measurement category		A		09 Air flow q_v	m ³ /h	3210
03 Efficiency category		Static		09 Pressure increase p_{fs}	Pa	898
04 Efficiency grade N		75.7	62	10 Speed (rpm) n	min ⁻¹	2860
05 Variable speed drive		Yes		11 Specific ratio [*]		1.01

Data definition with optimum efficiency.

The ErP data is determined using a motor-impeller combination in a standardised measurement configuration.

^{*} Specific ratio = $1 + p_{fs} / 100\,000\text{ Pa}$

LU-161874



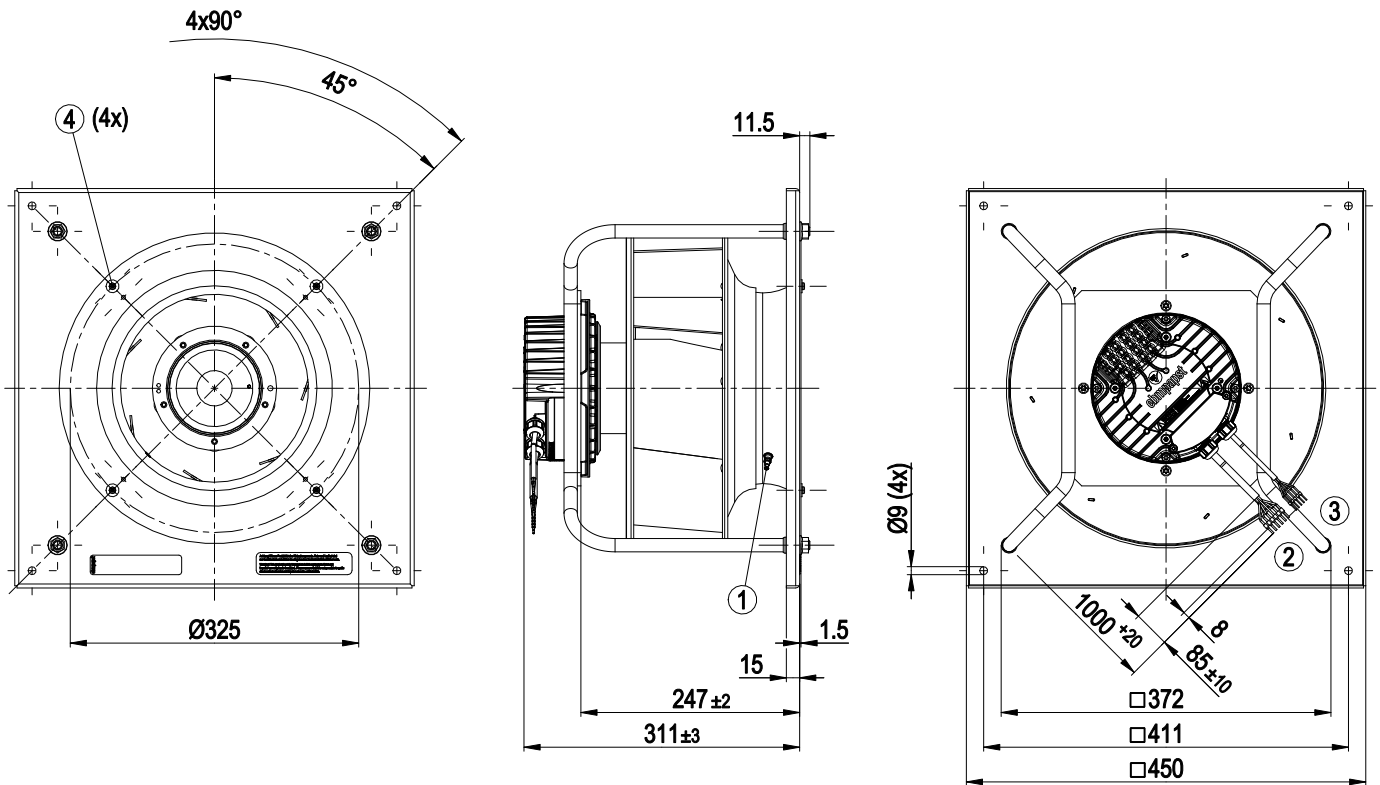
Technical features

Mass	14.3 kg
Size	310 mm
Surface of rotor	Coated in black
Material of electronics housing	Die-cast aluminium
Material of impeller	Aluminium sheet
Material of mounting plate	Sheet steel, galvanised
Material of support bracket	Steel, coated in black
Material of inlet nozzle	Sheet steel, galvanised
Number of blades	7
Direction of rotation	Clockwise, seen on rotor
Type of protection	IP 55
Insulation class	"F"
Humidity (F)/environmental protection class (H)	H1
Max. permissible ambient motor temp. (transp./ storage)	+80 °C
Min. permissible ambient motor temp. (transp./storage)	-40 °C
Mounting position	Shaft horizontal or rotor on bottom; rotor on top on request
Condensate discharge holes	Rotor-side
Operation mode	S1
Motor bearing	Ball bearing
Technical features	<ul style="list-style-type: none"> - Output 10 VDC, max. 10 mA - Operation and alarm display - External 24 V input (programming) - Alarm relay - Integrated PID controller - Motor current limit - PFC, passive - RS485 MODBUS RTU - Soft start - Maximum EEPROM write cycles 100,000 - Control input 0-10 VDC / PWM - Control interface with SELV potential safely disconnected from the mains - Over-temperature protected electronics / motor - Line undervoltage / phase failure detection
EMC interference immunity	Acc. to EN 61000-6-2 (industrial environment)
EMC interference emission	Acc. to EN 61000-6-3 (household environment), except EN 61000-3-2 for professionally used devices with a total rated power greater than 1 kW
Touch current acc. IEC 60990 (measuring network Fig. 4, TN system)	<= 3.5 mA
Motor protection	Thermal overload protector (TOP) wired internally
Cable exit	Variable
Protection class	I (if protective earth is connected by customer)
Product conforming to standard	EN 61800-5-1; CE
Approval	C22.2 Nr.77 + CAN/CSA-E60730-1; EAC; UL 1004-7 + 60730

EC centrifugal module

backward curved, single inlet
with support bracket

Product drawing

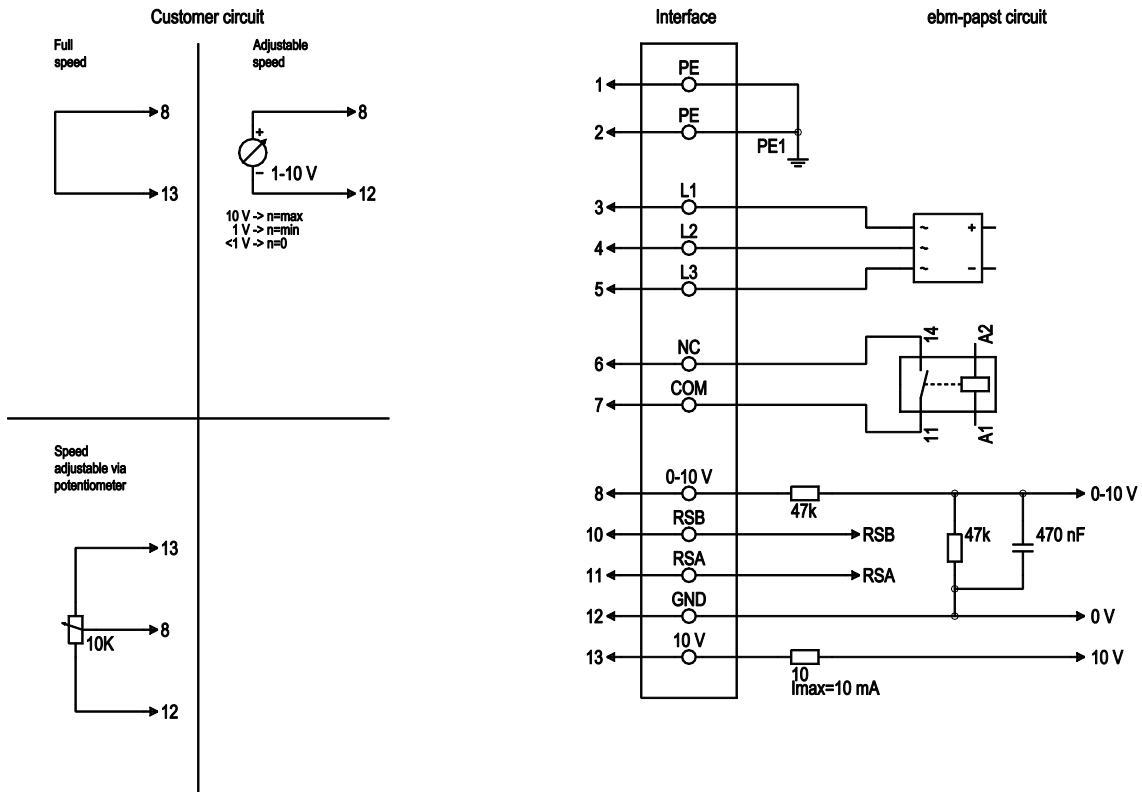


1	Inlet nozzle 31575-2-4013 with pressure tap (k-factor: 116)
2	Connection line PVC AWG18, 6x crimped core-end sleeves
3	Connection line PVC AWG22, 5x crimped core-end sleeves
4	Mounting for inlet nozzle and FlowGrid

EC centrifugal module

backward curved, single inlet
with support bracket

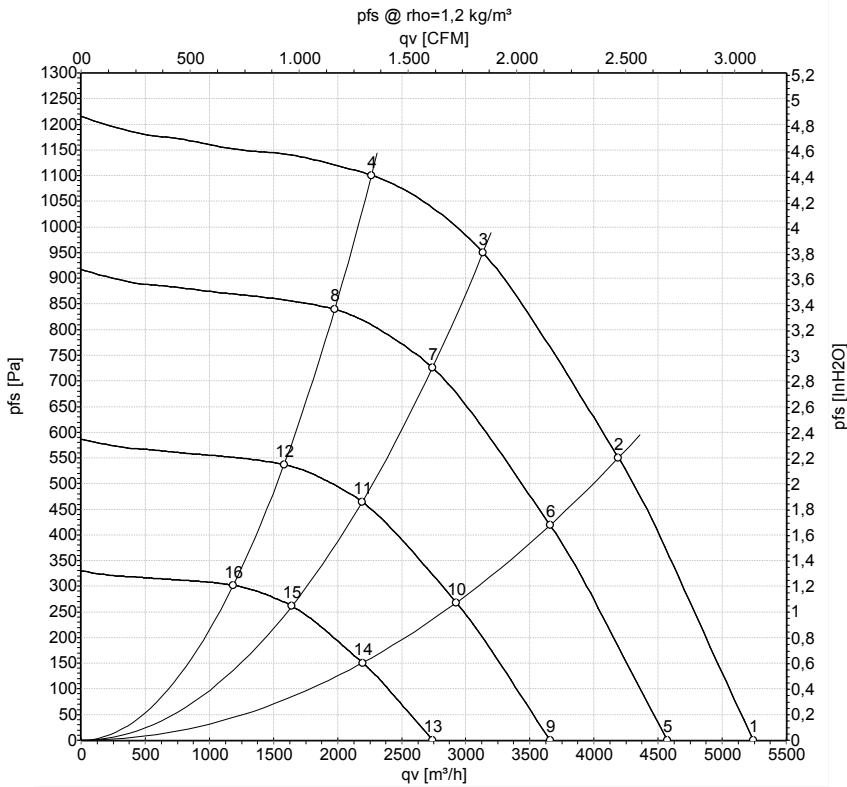
Connection screen



No.	Conn.	Designation	Colour	Function / assignment
1	1, 2	PE	green/yellow	Protective earth
1	3	L1	black	Power supply
1	4	L2	black	Power supply
1	5	L3	black	Power supply
1	6	NC	white 1	Status relay, floating status contact, break for failure, contact rating 250 VAC / 2 A (AC1) / min. 10 mA; reinforced insulation on mains side and basic insulation on control interface side
1	7	COM	white 2	Status relay, floating status contact, break for failure, contact rating 250 VAC / 2 A (AC1) / min. 10 mA; reinforced insulation on mains side and basic insulation on control interface side
2	8	0-10V	yellow	Analogue input (set value), 0-10 V, Ri=100 kΩ; parametrisable curve, SELV
2	10	RSB	brown	RS-485 interface for MODBUS, RSB; SELV
2	11	RSA	white	RS-485 interface for MODBUS, RSA; SELV
2	12	GND	blue	Signal ground for control interface, SELV
2	13	+10V	red	Fixed voltage output 10 VDC, +10 V ±3%, max. 10 mA, short-circuit-proof, power supply for external devices (e.g. potentiometer); SELV Fixed voltage input 24 VDC for parameter setting via MODBUS without mains power supply



Charts: Air flow 50 Hz



Measurement: LU-161874-1

Air performance measured as per ISO 5801 Installation category A. For detailed information on the measuring set-up, please contact ebmpapst. Suction-side noise levels: LwA measured as per ISO 13347 / LpA measured with 1m distance to fan axis. The values given are valid under the measuring conditions mentioned above and may vary according to the actual installation situation. With any deviation from the standard set-up, the specific values have to be checked and reviewed with the unit installed.

Measured values

	U	f	n	P _{ed}	I	q _v	P _{fs}	q _v	P _{fs}
	V	Hz	min ⁻¹	W	A	m ³ /h	Pa	cfm	inH2O
1	400	50	2860	898	1.42	5245	0	3085	0.00
2	400	50	2860	1144	1.80	4190	550	2465	2.21
3	400	50	2860	1300	2.00	3135	950	1845	3.81
4	400	50	2860	1230	1.93	2265	1100	1335	4.42
5	400	50	2500	595	0.94	4570	0	2690	0.00
6	400	50	2500	761	1.20	3660	419	2155	1.68
7	400	50	2500	869	1.37	2740	728	1615	2.92
8	400	50	2500	819	1.29	1980	839	1165	3.37
9	400	50	2000	304	0.48	3655	0	2150	0.00
10	400	50	2000	390	0.61	2925	268	1720	1.08
11	400	50	2000	445	0.70	2190	466	1290	1.87
12	400	50	2000	419	0.66	1580	537	930	2.16
13	400	50	1500	128	0.20	2745	0	1615	0.00
14	400	50	1500	164	0.26	2195	151	1290	0.61
15	400	50	1500	188	0.29	1645	262	970	1.05
16	400	50	1500	177	0.28	1185	302	700	1.21

U = Supply voltage · f = Frequency · n = Speed (rpm) · P_{ed} = Power input · I = Current draw · q_v = Air flow · P_{fs} = Pressure increase

