

EC centrifugal module - RadiPac

backward curved, single inlet

with support bracket

K3G280-PS10-J8 ebmpapst Datasheet

sales@fansco.com

www.fansco.com

Limited partnership · Headquarters Mulfingen
County court Stuttgart · HRA 590344

General partner Elektrobau Mulfingen GmbH · Headquarters Mulfingen
County court Stuttgart · HRB 590142

Nominal data

Type	K3G280-PS10-J8	
Motor	M3G084-FA	
Phase		3~
Nominal voltage	VAC	400
Nominal voltage range	VAC	380 .. 480
Frequency	Hz	50/60
Type of data definition		ml
Speed (rpm)	min ⁻¹	3400
Power input	W	1050
Current draw	A	1.6
Min. ambient temperature	°C	-25
Max. ambient temperature	°C	45

ml = Max. load · me = Max. efficiency · fa = Running at free air · cs = Customer specs · cu = Customer unit
Subject to alterations

Data according to ErP directive

		Actual	Request 2015			
01 Overall efficiency η_{es}	%	67.1	51.6	09 Power input P_{ed}	kW	1.02
02 Measurement category		A		09 Air flow q_v	m ³ /h	2810
03 Efficiency category		Static		09 Pressure increase p_{fs}	Pa	808
04 Efficiency grade N		77.5	62	10 Speed (rpm) n	min ⁻¹	3390
05 Variable speed drive		Yes		11 Specific ratio*		1.01

Data definition with optimum efficiency.
The ErP data is determined using a motor-impeller combination in a standardised measurement configuration.

* Specific ratio = $1 + p_{fs} / 100\,000\text{ Pa}$

LU-174002



backward curved, single inlet
with support bracket

Technical features

Flowgrid material	PP plastic
Mass	11.2 kg
Size	280 mm
Surface of rotor	Coated in black
Material of electronics housing	Die-cast aluminium, coated in black
Material of impeller	PP plastic
Material of mounting plate	Sheet steel, galvanised and coated in black
Material of support bracket	Steel, galvanised and coated in black
Material of inlet nozzle	Sheet steel, galvanised and coated in black
Number of blades	6
Direction of rotation	Clockwise, seen on rotor
Type of protection	IP 55
Insulation class	"F"
Humidity (F)/environmental protection class (H)	H2+
Note ambient temperature	Occasional start-up between -40°C and -25°C is permissible. For continuous operation at ambient temperatures below -25°C (e.g. refrigeration applications) we recommend our fan version with special low-temperature bearings.
Max. permissible ambient motor temp. (transp./ storage)	+ 80 °C
Min. permissible ambient motor temp. (transp./storage)	- 40 °C
Mounting position	Shaft horizontal or rotor on bottom; rotor on top on request
Condensate discharge holes	Rotor-side
Operation mode	S1
Motor bearing	Ball bearing
Technical features	<ul style="list-style-type: none"> - Output 10 VDC, max. 10 mA - Operation and alarm display - External 24 V input (programming) - Alarm relay - Integrated PID controller - Motor current limit - PFC, passive - RS485 MODBUS RTU - Soft start -Maximum EEPROM write cycles 100,000 - Control input 0-10 VDC / PWM - Control interface with SELV potential safely disconnected from the mains - Over-temperature protected electronics / motor - Line undervoltage / phase failure detection
EMC interference immunity	Acc. to EN 61000-6-2 (industrial environment)
EMC interference emission	Acc. to EN 61000-6-3 (household environment), except EN 61000-3-2 for professionally used devices with a total rated power greater than 1 kW
Touch current acc. IEC 60990 (measuring network Fig. 4, TN system)	<= 3.5 mA
Motor protection	Thermal overload protector (TOP) wired internally
Cable exit	Variable
Protection class	I (if protective earth is connected by customer)



K3G280-PS10-J8

EC centrifugal module - RadiPac

backward curved, single inlet
with support bracket

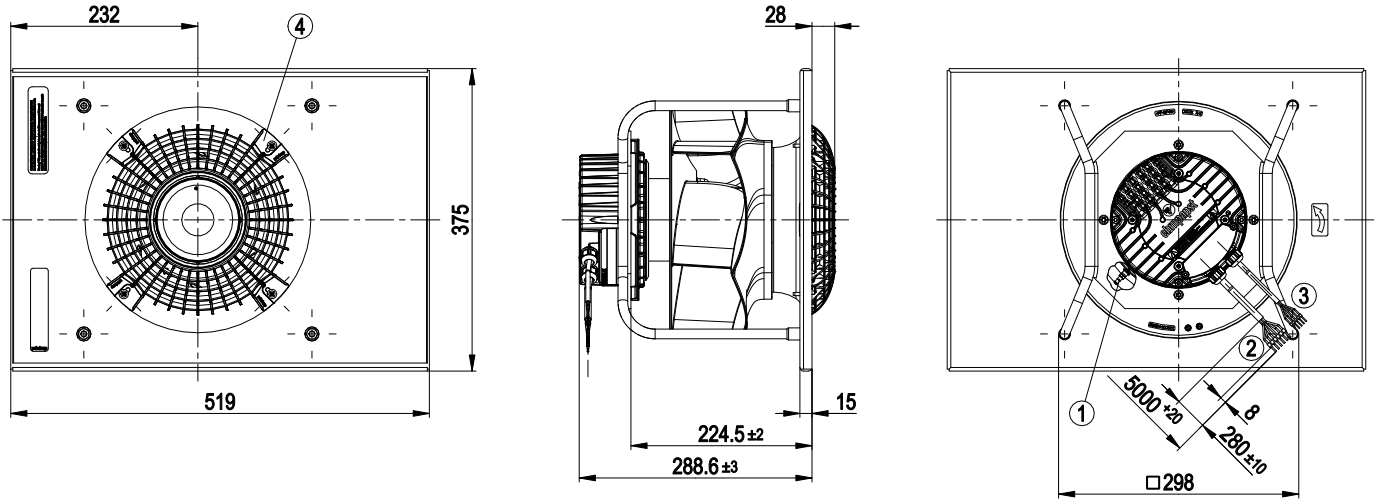
Product conforming to standard	EN 61800-5-1; CE
Approval	C22.2 Nr.77 + CAN/CSA-E60730-1; UL 1004-7 + 60730



EC centrifugal module - RadiPac

backward curved, single inlet
with support bracket

Product drawing



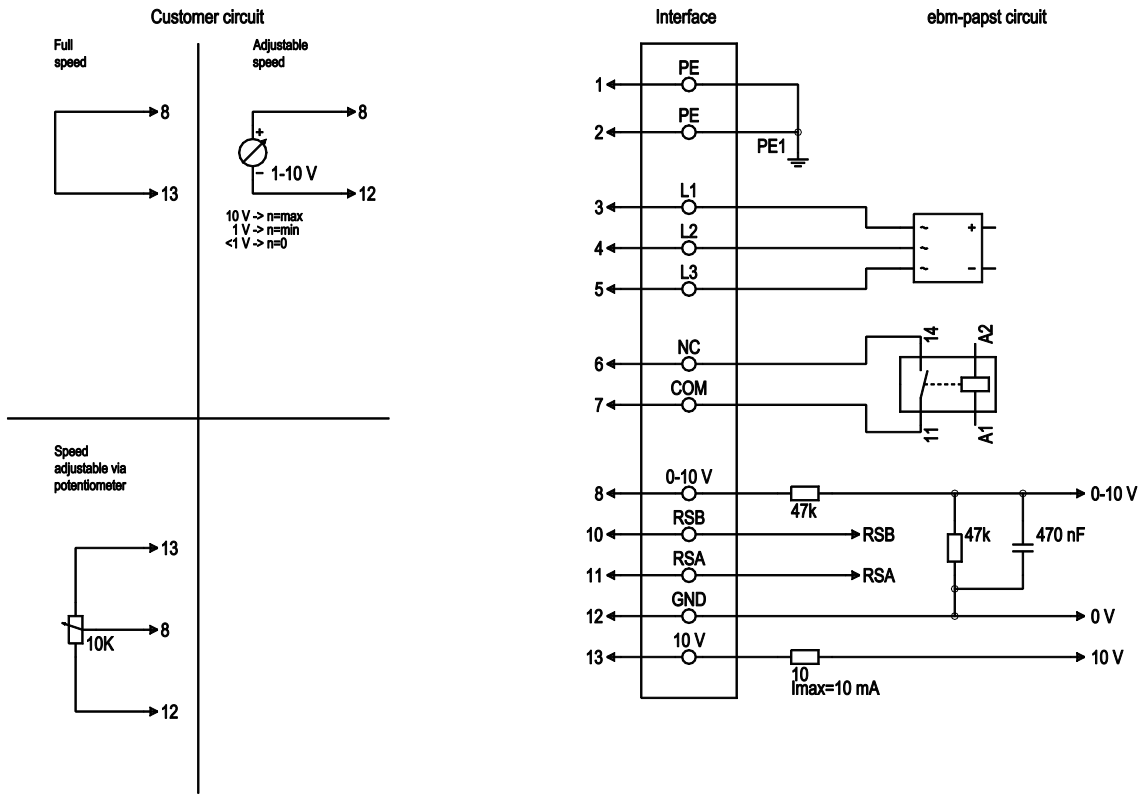
1	Inlet nozzle 28004-2-4013 with pressure tap (k-factor: 77)
2	Connection line PVC AWG18, 6x crimped core-end sleeves
3	Connection line PVC AWG22, 5x crimped core-end sleeves
4	FlowGrid



EC centrifugal module - RadiPac

backward curved, single inlet
with support bracket

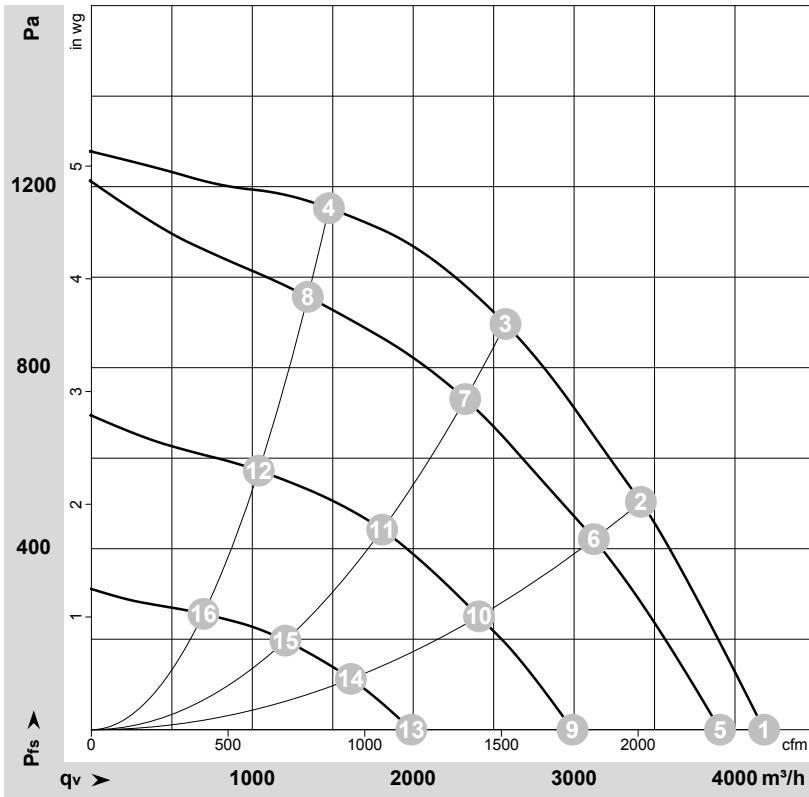
Connection screen



No.	Conn.	Designation	Colour	Function / assignment
1	1, 2	PE	green/yellow	Protective earth
1	3	L1	black	Power supply
1	4	L2	black	Power supply
1	5	L3	black	Power supply
1	6	NC	white 1	Status relay, floating status contact, break for failure, contact rating 250 VAC / 2 A (AC1) / min. 10 mA; reinforced insulation on mains side and basic insulation on control interface side
1	7	COM	white 2	Status relay, floating status contact, break for failure, contact rating 250 VAC / 2 A (AC1) / min. 10 mA; reinforced insulation on mains side and basic insulation on control interface side
2	8	0-10V	yellow	Analogue input (set value), 0-10 V, Ri=100 kΩ; parametrisable curve, SELV
2	10	RSB	brown	RS-485 interface for MODBUS, RSB; SELV
2	11	RSA	white	RS-485 interface for MODBUS, RSA; SELV
2	12	GND	blue	Signal ground for control interface, SELV
2	13	+10V	red	Fixed voltage output 10 VDC, +10 V ±3%, max. 10 mA, short-circuit-proof, power supply for external devices (e.g. potentiometer); SELV Fixed voltage input 24 VDC for parameter setting via MODBUS without mains power supply



Charts: Air flow 50 Hz



$\rho = 1.15 \text{ kg/m}^3 \pm 2 \%$

Measurement: LU-174002-1

Air performance measured as per ISO 5801 Installation category A. For detailed information on the measuring set-up, please contact ebmpapst. Suction-side noise levels: LwA measured as per ISO 13347 / LpA measured with 1m distance to fan axis. The values given are valid under the measuring conditions mentioned above and may vary according to the actual installation situation. With any deviation from the standard set-up, the specific values have to be checked and reviewed with the unit installed.

Measured values

	U	f	n	P _{ed}	I	LpA _{in}	LwA _{in}	q _v	P _{fs}	q _v	P _{fs}
	V	Hz	min ⁻¹	W	A	dB(A)	dB(A)	m ³ /h	Pa	cfm	inH ₂ O
1	400	50	3400	743	1.17	81	88	4180	0	2460	0.00
2	400	50	3400	963	1.49	75	83	3415	500	2010	2.01
3	400	50	3400	1050	1.60	72	80	2575	900	1515	3.61
4	400	50	3400	926	1.43	76	85	1475	1150	870	4.62
5	400	50	3185	624	0.99	79	86	3905	0	2300	0.00
6	400	50	3110	717	1.12	73	80	3125	423	1840	1.70
7	400	50	3060	779	1.21	69	77	2325	732	1370	2.94
8	400	50	3110	710	1.11	74	81	1345	957	790	3.84
9	400	50	2445	295	0.54	72	79	2990	0	1760	0.00
10	400	50	2400	351	0.61	65	73	2410	251	1420	1.01
11	400	50	2380	384	0.65	61	68	1805	446	1065	1.79
12	400	50	2410	345	0.60	68	75	1040	572	615	2.30
13	400	50	1635	107	0.29	62	70	1990	0	1170	0.00
14	400	50	1615	125	0.31	56	63	1615	113	950	0.45
15	400	50	1605	134	0.33	52	59	1205	198	710	0.79
16	400	50	1615	123	0.31	55	63	695	256	410	1.03

U = Supply voltage · f = Frequency · n = Speed (rpm) · P_{ed} = Power input · I = Current draw · LpA_{in} = Sound pressure level inlet side · LwA_{in} = Sound power level inlet side · q_v = Air flow
P_{fs} = Pressure increase

