

K3G097-AF25-01

# EC centrifugal fan

forward curved, dual inlet  
with housing (flange), Automotive



K3G097-AF25-01 ebmpapst Datasheet  
sales@fansco.com  
www.fansco.com

Limited partnership · Headquarters Muldingen  
County court Stuttgart · HRA 590344

General partner Elektrobau Muldingen GmbH · Headquarters Muldingen  
County court Stuttgart · HRB 590142



## Nominal data

Type	K3G097-AF25-01	
Motor	M3G084-BF	
Nominal voltage	VDC	26
Type of data definition		fa
State		prelim.
Speed	min <sup>-1</sup>	3930
Power input	W	430
Current draw	A	16.4
Min. back pressure	Pa	0
Min. ambient temperature	°C	-40
Max. ambient temperature	°C	85

ml = Max. load · me = Max. efficiency · fa = Running at free air · cs = Customer specs · cu = Customer unit  
Subject to alterations

## Data according to ErP directive

Installation category	A
Efficiency category	Static
Variable speed drive	Yes
Specific ratio*	1.01

\* Specific ratio =  $1 + p_{fs} / 100\,000\text{ Pa}$

		Actual	Request 2013	Request 2015
Overall efficiency $\eta_{es}$	%	47.8	27.4	34.4
Efficiency grade N		57.4	37	44
Power input $P_e$	kW	0.3		
Air flow $q_v$	m <sup>3</sup> /h	605		
Pressure increase $p_{fs}$	Pa	773		
Speed n	min <sup>-1</sup>	5415		

Data definition with optimum efficiency. LU-159053  
The ErP data is determined using a motor-impeller combination in a standardised measurement configuration.



# EC centrifugal fan

forward curved, dual inlet  
with housing (flange), Automotive

## Technical features

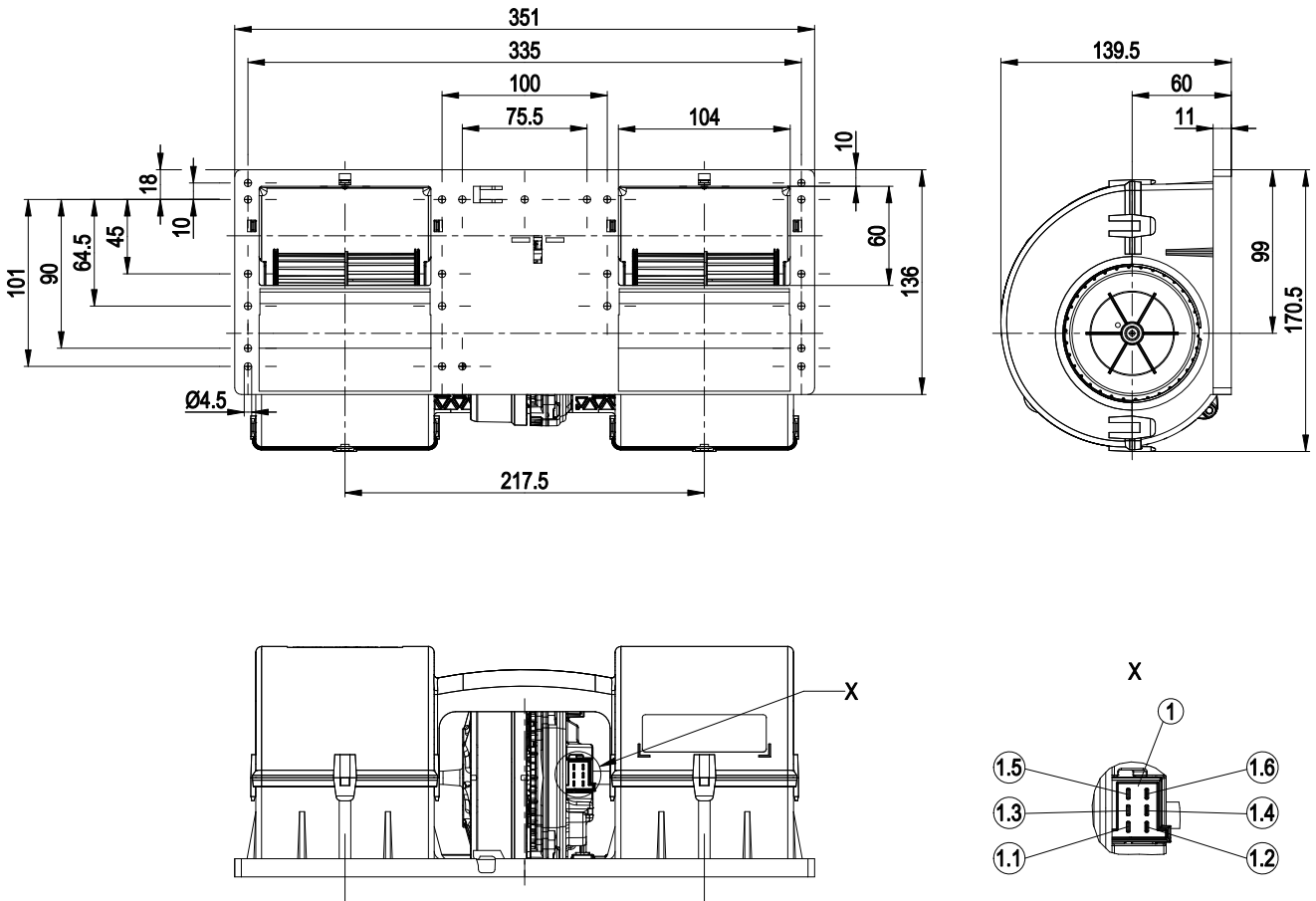
<b>Mass</b>	2 kg
<b>Size</b>	97 mm
<b>Material of impeller</b>	PA plastic
<b>Housing material</b>	PP plastic
<b>Number of blades</b>	34
<b>Balance quality according to DIN ISO 1940-1</b>	G 2.5
<b>Direction of rotation</b>	Clockwise, seen on rotor
<b>Type of protection</b>	IP 24 KM
<b>Insulation class</b>	"B"
<b>Humidity class</b>	F3-2
<b>Max. permissible ambient motor temp. (transp./ storage)</b>	+85 °C
<b>Min. permissible ambient motor temp. (transp./storage)</b>	-40 °C
<b>Mounting position</b>	Any
<b>Condensate discharge holes</b>	None, open rotor
<b>Operation mode</b>	S1
<b>Motor bearing</b>	Ball bearing; (sealed)
<b>Life expectancies</b>	40,000 h (typical)
<b>Technical features</b>	<ul style="list-style-type: none"> <li>- Lowering input</li> <li>- Fault output (high-side switch max. 30 mA)</li> <li>- INVLIN (control input, inverse linear)</li> <li>- Output limit</li> <li>- Load dump (58 V)</li> <li>- Motor current limit</li> <li>- Soft start</li> <li>- Control input 0-10 VDC / PWM</li> <li>- Overvoltage detection</li> <li>- Excess temperature protection for electronics</li> <li>- Undervoltage detection</li> </ul>
<b>Electrical leads</b>	With plug; Standby current less than 500 µA
<b>Motor protection</b>	Reverse polarity and locked-rotor protection
<b>Remark</b>	E1 approval in preparation



# EC centrifugal fan

forward curved, dual inlet  
with housing (flange), Automotive

## Product drawing



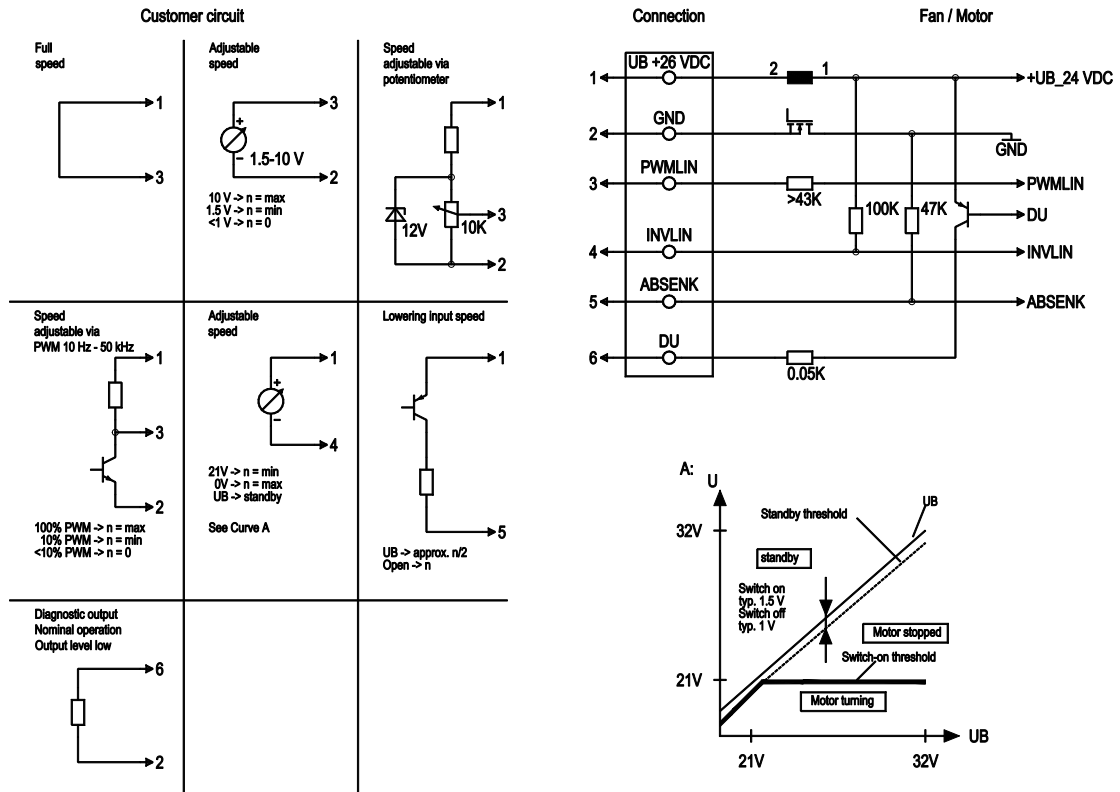
1	Strip 6-pole, mating connector Tyco 929504-2 (not included in scope of delivery)
1.1	+ UB (black)
1.2	GND (brown)
1.3	PWM/LIN (yellow)
1.4	INVLIN (orange)
1.5	ABSENK (blue)
1.6	Diagnostic output (white)



# EC centrifugal fan

forward curved, dual inlet  
with housing (flange), Automotive

## Connection screen



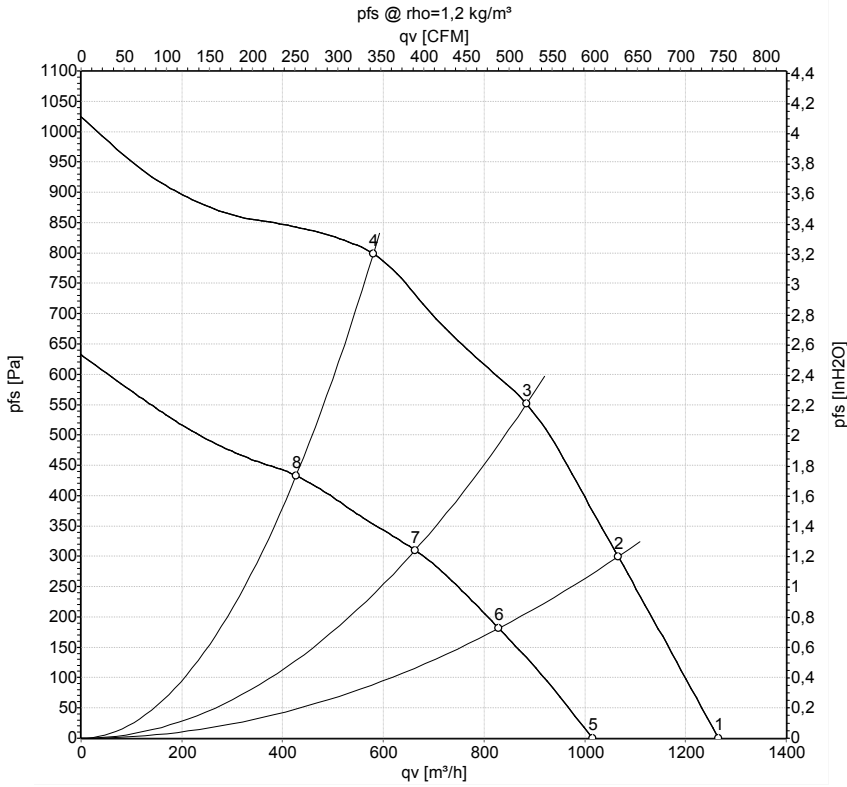
No.	Conn.	Designation	Function / assignment
	1	UB +26 VDC	Power supply 26 VDC
	2	GND	Power supply GND, reference ground
	3	PWMLIN	Analogue voltage control input 0 -10 V or PWM
	4	INVLIN	Control input, inverse linear
	5	ABSENK	Lowering input
	6	DU	Diagnostic output



# EC centrifugal fan

forward curved, dual inlet  
with housing (flange), Automotive

## Charts: Air flow



Measurement: LU-161339  
Measurement: LU-159284

Air performance measured as per ISO 5801 Installation category A. For detailed information on the measuring set-up, please contact ebm-papst. Suction-side noise levels: LwA measured as per ISO 13347 / LpA measured with 1m distance to fan axis. The values given are valid under the measuring conditions mentioned above and may vary according to the actual installation situation. With any deviation from the standard set-up, the specific values have to be checked and reviewed with the unit installed.

## Measured values

	U	n	P <sub>ed</sub>	I	LpA <sub>in</sub>	LwA <sub>in</sub>	qv	p <sub>fs</sub>
	V	min <sup>-1</sup>	W	A	dB(A)	dB(A)	m <sup>3</sup> /h	Pa
1	26-32	3930	430	16.4*	72	83	1265	0
2	26-32	4220	376	14.5*	70	81	1065	300
3	26-32	4665	348	13.4*	70	80	885	550
4	26-32	5330	308	11.8*	71	81	580	800
5	16	3075	205	12.81			1015	0
6	16	3340	172	10.77			830	181
7	16	3575	149	9.33			665	310
8	16	3960	121	7.53			425	434

U = Supply voltage · n = Speed · P<sub>ed</sub> = Power input · I = Current draw · \* = Current measured at rated voltage · LpA<sub>in</sub> = Sound pressure level inlet side · LwA<sub>in</sub> = Sound power level inlet side  
qv = Air flow · p<sub>fs</sub> = Pressure increase

