

EC centrifugal fan

forward curved, single inlet
with housing (without flange)

G3G133-EN13-08 ebmpapst Datasheet
sales@fansco.com
www.fansco.com

Limited partnership · Headquarters Muldingen
County court Stuttgart · HRA 590344

General partner Elektrobau Muldingen GmbH · Headquarters Muldingen
County court Stuttgart · HRB 590142

Nominal data

Type	G3G133-EN13-08	
Motor	M3G045-AI	
Nominal voltage	VDC	24
Nominal voltage range	VDC	21,6 .. 26,4
Type of data definition		fa
Speed (rpm)	min ⁻¹	1720
Power input	W	35
Current draw	A	1.45
Min. back pressure	Pa	0
Min. ambient temperature	°C	-25
Max. ambient temperature	°C	60

ml = Max. load · me = Max. efficiency · fa = Running at free air · cs = Customer specs · cu = Customer unit
Subject to alterations



EC centrifugal fan

forward curved, single inlet
with housing (without flange)

Technical features

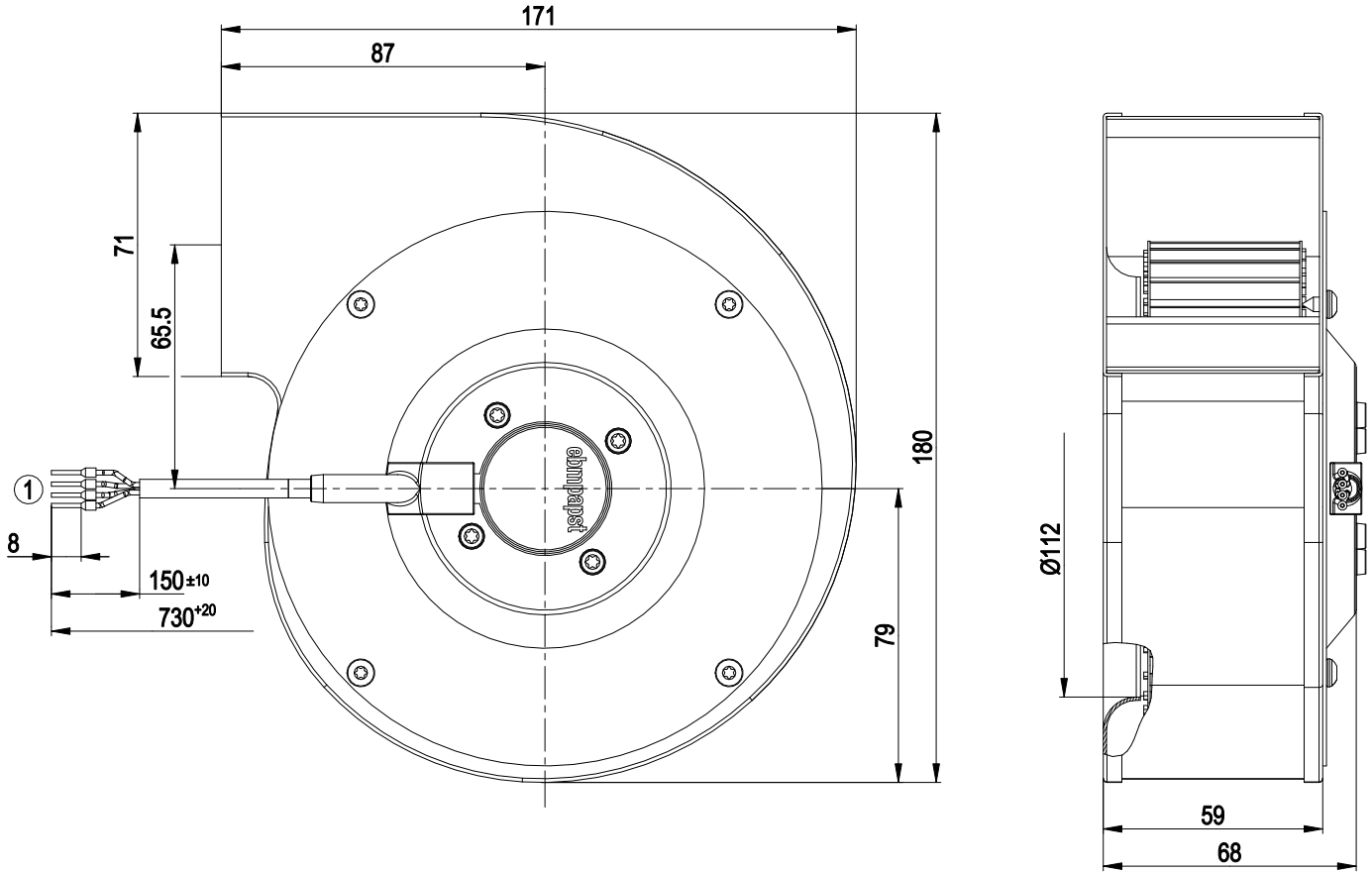
Mass	1.1 kg
Size	133 mm
Surface of rotor	Thick layer passivated
Material of impeller	Sheet steel, galvanised
Housing material	Sheet steel, galvanised
Direction of rotation	Clockwise, seen on rotor
Type of protection	IP 20
Insulation class	"B"
Humidity (F)/environmental protection class (H)	H0 - dry environment
Max. permissible ambient motor temp. (transp./ storage)	+ 80 °C
Min. permissible ambient motor temp. (transp./storage)	- 40 °C
Mounting position	Any
Condensate discharge holes	None, open rotor
Operation mode	S1
Motor bearing	Ball bearing
Technical features	<ul style="list-style-type: none"> - Tach output - Output limit - Soft start - Control input 0-10 VDC / PWM - Overvoltage detection - Over-temperature protected motor - Line undervoltage detection
Motor protection	Thermal overload protector (TOP) wired internally
Cable exit	Variable
Protection class	III
Product conforming to standard	EN 60335-1
Approval	VDE



EC centrifugal fan

forward curved, single inlet
with housing (without flange)

Product drawing



1 Connection line PVC AWG22, 4x crimped core-end sleeves



EC centrifugal fan

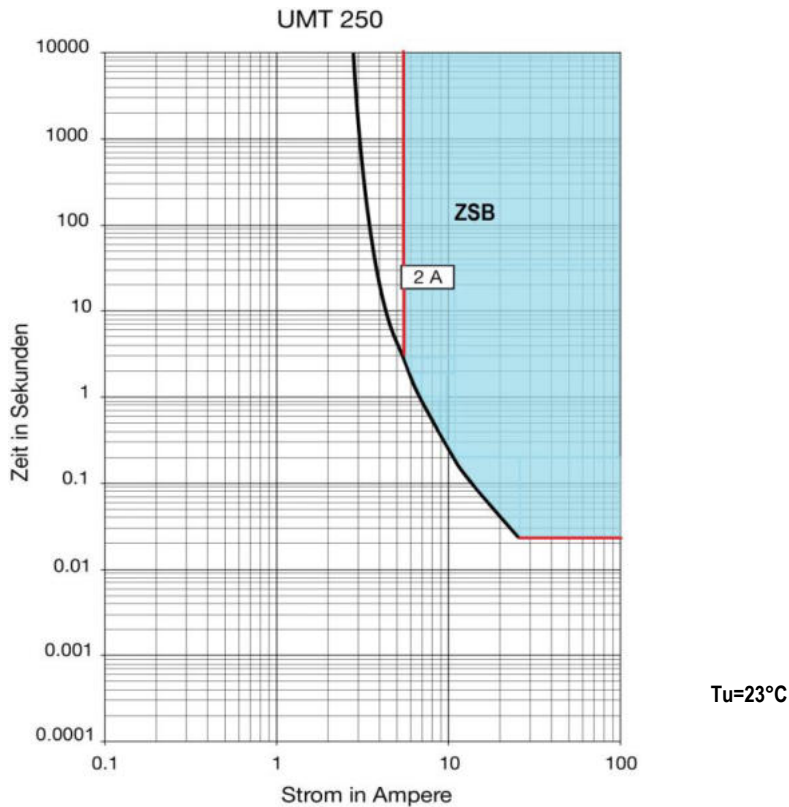
forward curved, single inlet
with housing (without flange)

Anforderungen an das Netzteil

Versorgung durch ein SELV Netzteil nach EN 60335-1

Nennspannung:	24VDC
Spannungsbereich:	24VDC +/-10%
Mindeststrom im Fehlerfall:	5,5A für min. 4s oder innerhalb des geforderten Zeit/ Strombereiches (ZSB) im unteren Schaubild (an der Anschlussleitung gemessen)

Es handelt sich bei allen Angaben um typische Werte.



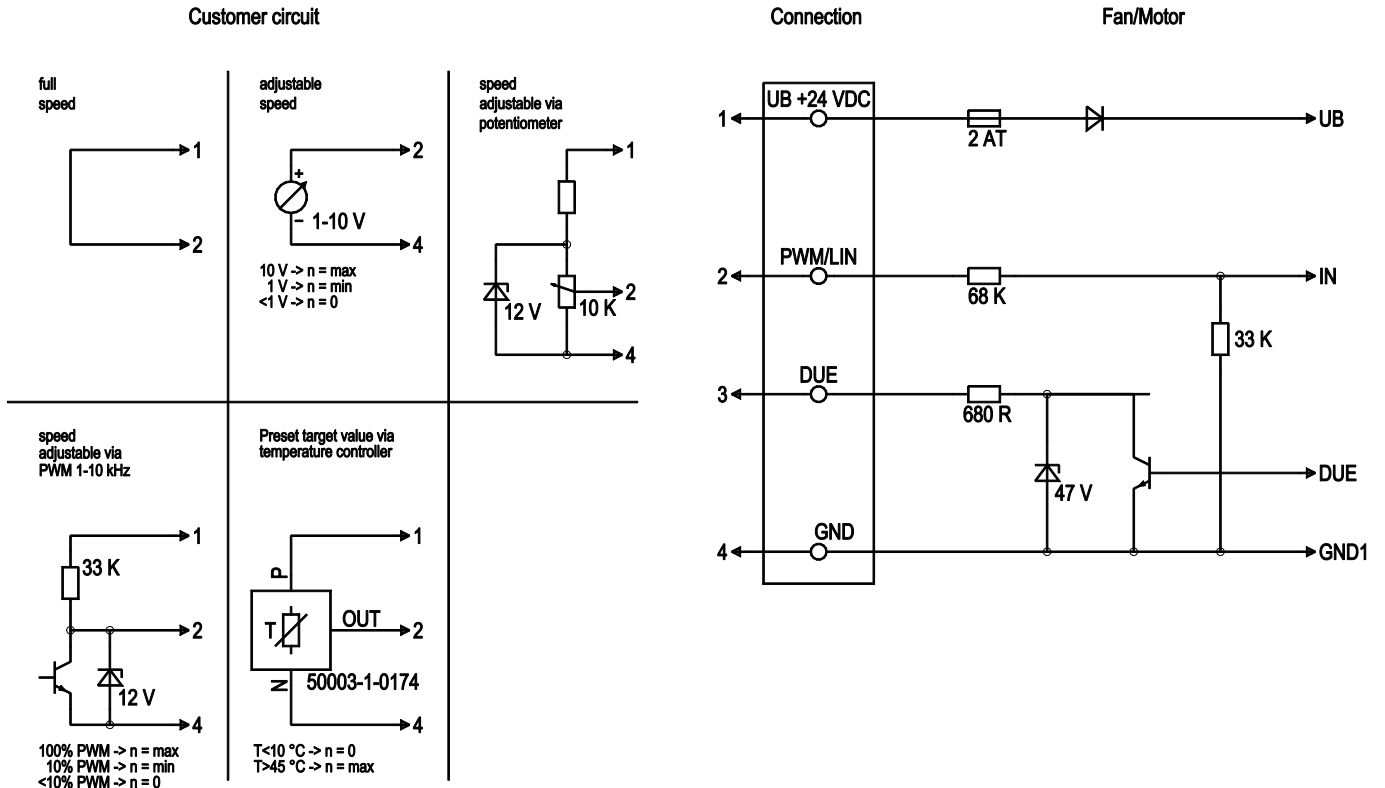
Quelle: Datenblatt Schurter UMT 250

Sicherheit ist in Verbindung mit dem verwendeten Netzteil im Endgerät zu prüfen!

EC centrifugal fan

forward curved, single inlet
with housing (without flange)

Connection screen



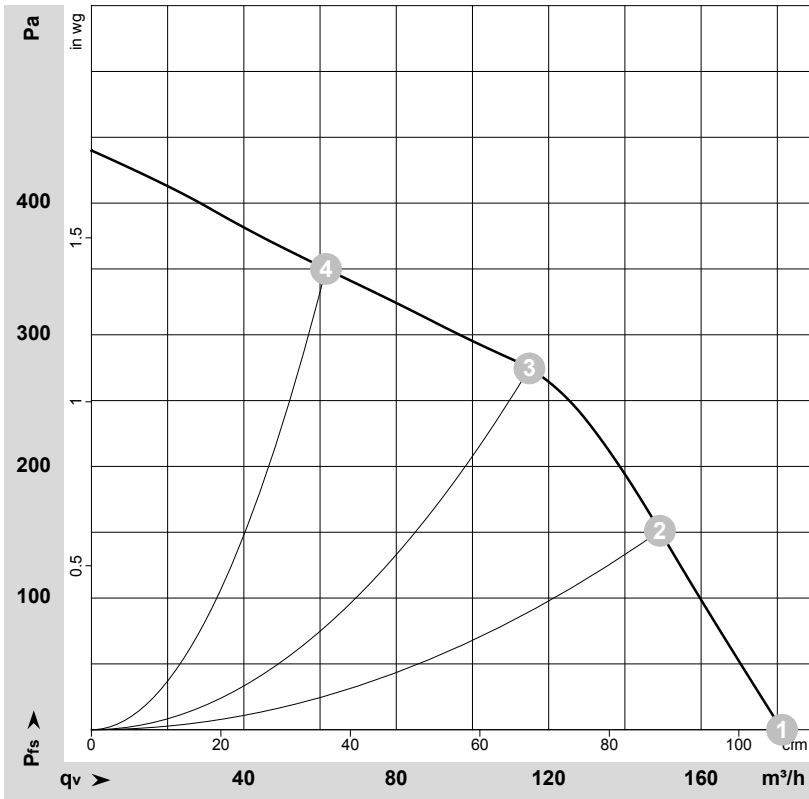
No.	Conn.	Designation	Colour	Function / assignment
1		UN +24 VDC	red	Power supply +24 VDC
2		PWM/LIN	yellow	Control input
3		DUE	white	Speed monitoring output, 1 pulse per revolution, Isink max = 10 mA
4		GND	blue	Reference earth



EC centrifugal fan

forward curved, single inlet
with housing (without flange)

Charts: Air flow



$\rho = 1.15 \text{ kg/m}^3 \pm 2 \%$

Measurement: LU-175410-1

Air performance measured as per ISO 5801 Installation category A. For detailed information on the measuring set-up, please contact ebmpapst. Suction-side noise levels: LwA measured as per ISO 13347 / LpA measured with 1m distance to fan axis. The values given are valid under the measuring conditions mentioned above and may vary according to the actual installation situation. With any deviation from the standard set-up, the specific values have to be checked and reviewed with the unit installed.

Measured values

	U	n	P _{ed}	I	LpA _{in}	LwA _{in}	q _v	p _{fs}	q _v	p _{fs}
	V	min ⁻¹	W	A	dB(A)	dB(A)	m ³ /h	Pa	cfm	inH2O
1	24	1720	35	1.45	58	65	180	0	105	0.00
2	24	2070	35	1.45	59	66	150	150	90	0.60
3	24	2490	33	1.37	61	68	115	275	70	1.10
4	24	2800	26	1.07	62	70	60	350	35	1.41

U = Supply voltage · n = Speed (rpm) · P_{ed} = Power input · I = Current draw · LpA_{in} = Sound pressure level inlet side · LwA_{in} = Sound power level inlet side · q_v = Air flow · p_{fs} = Pressure increase

