

AC centrifugal fan

forward curved, single inlet

with housing (flange)

G2E108-AA33-86 ebmpapst Datasheet

sales@fansco.com

www.fansco.com

Limited partnership · Headquarters Muldingen
County court Stuttgart · HRA 590344General partner Elektrobau Muldingen GmbH · Headquarters Muldingen
County court Stuttgart · HRB 590142

Nominal data

Type	G2E108-AA33-86	
Motor	M2E042-CA	
Phase		1~
Nominal voltage	VAC	230
Frequency	Hz	50
Type of data definition		fa
Valid for approval / standard		CE
Speed (rpm)	min ⁻¹	1200
Power input	W	25
Current draw	A	0.13
Motor capacitor	µF	1.5
Capacitor voltage	VDB	400
Capacitor standard		S2 (CE)
Min. back pressure	Pa	0
Min. ambient temperature	°C	-25
Max. ambient temperature	°C	75
Starting current	A	0.14

ml = Max. load · me = Max. efficiency · fa = Running at free air · cs = Customer specs · cu = Customer unit
Subject to alterations



G2E108-AA33-86

AC centrifugal fan

forward curved, single inlet

with housing (flange)

Technical features

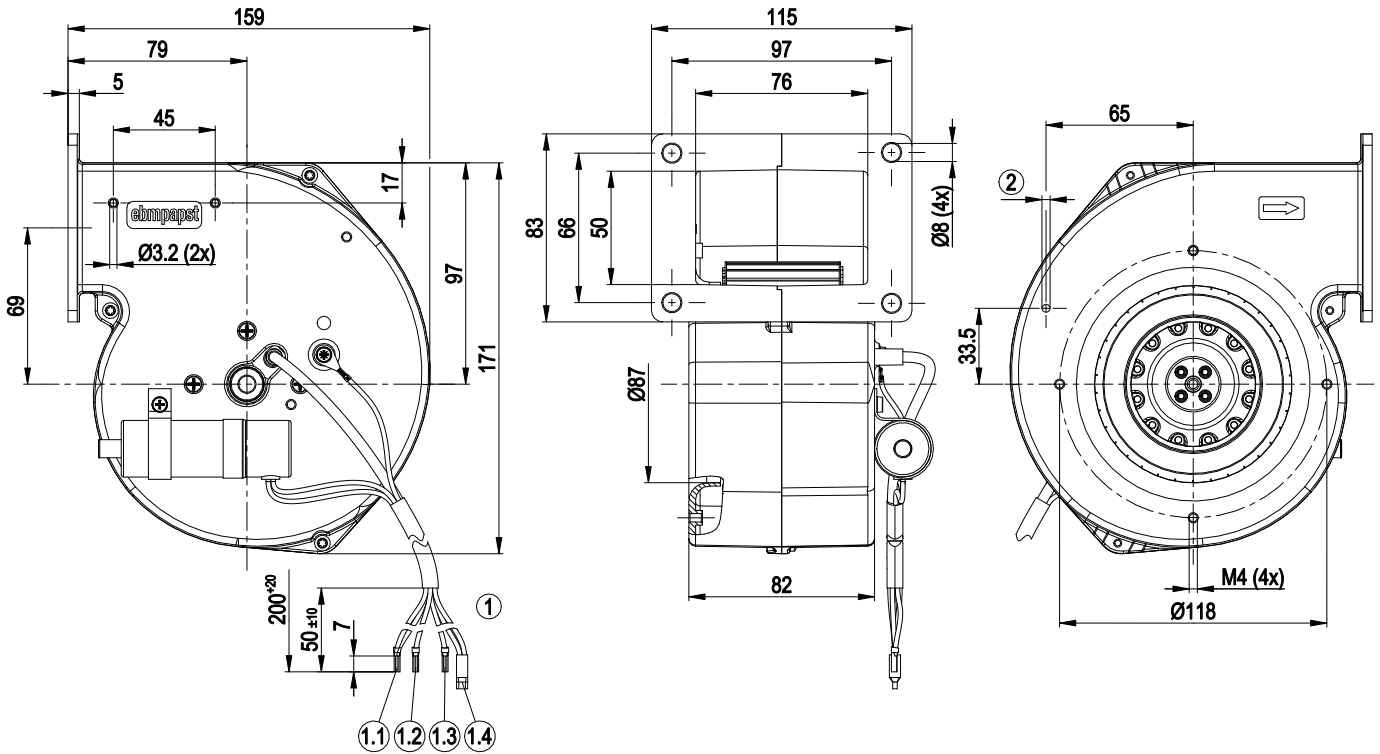
Mass	1.2 kg
Size	108 mm
Material of impeller	Sheet steel, galvanised
Housing material	Die-cast aluminium
Direction of rotation	Clockwise, seen on rotor
Type of protection	IP 44; Depending on installation and position
Insulation class	"B"
Max. permissible ambient motor temp. (transp./ storage)	+ 80 °C
Min. permissible ambient motor temp. (transp./storage)	- 40 °C
Mounting position	Any
Operation mode	S1
Motor bearing	Ball bearing
Touch current acc. IEC 60990 (measuring network Fig. 4, TN system)	< 0.75 mA
Motor protection	Thermal overload protector (TOP) wired internally
Protection class	Built-in component with basic insulation, protection rating results from installation according to intended use
Motor capacitor according to EN 60252-1 in safety protection class	S2
Product conforming to standard	EN 60335-1; CE



AC centrifugal fan

forward curved, single inlet
with housing (flange)

Product drawing



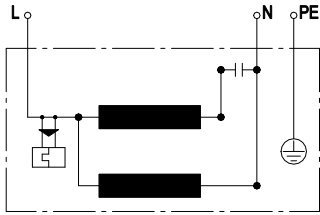
1	Connection line PVC 3x 0.25 mm ² , 1x AWG18 (green/yellow), 3x crimped core-end sleeves
1.1	N (black + capacitor)
1.2	PE (green/yellow)
1.3	L (blue)
1.4	Z (brown + capacitor)
2	Pilot hole prepared for self-tapping screw M4

G2E108-AA33-86

AC centrifugal fan

forward curved, single inlet
with housing (flange)

Connection screen



L	blue	N	black	PE	green/yellow
---	------	---	-------	----	--------------

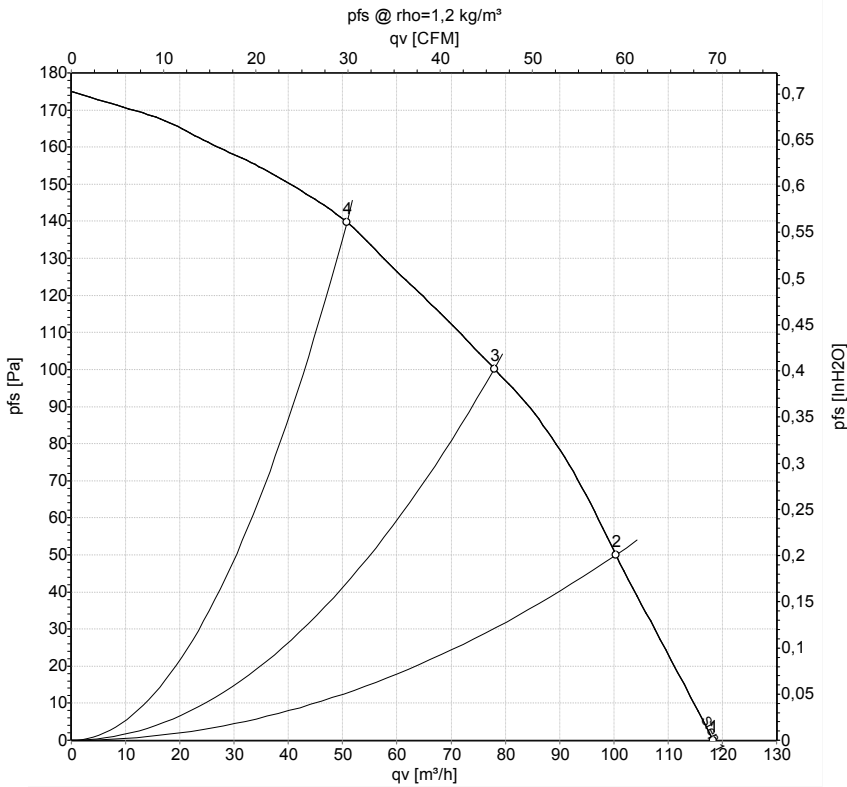


AC centrifugal fan

forward curved, single inlet

with housing (flange)

Charts: Air flow 50 Hz



Measurement: LU-160059-1

Air performance measured as per ISO 5801 Installation category A. For detailed information on the measuring set-up, please contact ebmpapst. Suction-side noise levels: LwA measured as per ISO 13347 / LpA measured with 1m distance to fan axis. The values given are valid under the measuring conditions mentioned above and may vary according to the actual installation situation. With any deviation from the standard set-up, the specific values have to be checked and reviewed with the unit installed.

Measured values

	Stage	U	f	n	P _e	I	LpA _{in}	LwA _{in}	q _v	P _{fs}	q _v	P _{fs}
		V	Hz	min ⁻¹	W	A	dB(A)	dB(A)	m ³ /h	Pa	cfm	inH2O
1	1	230	50	1200	25	0.13	45	52	120	0	70	0.00
2	1	230	50	1545	22	0.13	46	54	100	50	60	0.20
3	1	230	50	1865	21	0.12	47	56	80	100	45	0.40
4	1	230	50	2180	21	0.12	49	58	50	140	30	0.56

U = Supply voltage · f = Frequency · n = Speed (rpm) · P_e = Power input · I = Current draw · LpA_{in} = Sound pressure level inlet side · LwA_{in} = Sound power level inlet side · q_v = Air flow
 P_{fs} = Pressure increase

