

A2D300-AP08-15 ebmpapst Datasheet

sales@fansco.com

www.fansco.com

Limited partnership · Headquarters Muldingen

Amtsgericht (court of registration) Stuttgart · HRA 590344

General partner Elektrobau Muldingen GmbH · Headquarters Muldingen

Amtsgericht (court of registration) Stuttgart · HRB 590142

Nominal data

Type	A2D300-AP08-15							
Motor	M2D074-DF							
Phase		3~	3~	3~	3~	3~	3~	3~
Nominal voltage	VAC	230	230	230	400	400	400	460
Wiring		Δ	Δ	Δ	Y	Y	Y	Y
Frequency	Hz	50	60	60	50	60	60	60
Method of obtaining data		fa	fa	fa	fa	fa	fa	fa
Valid for approval/standard		-	-	UL	-	-	UL	-
Speed (rpm)	min ⁻¹	2500	2650	2650	2500	2650	2650	2850
Power consumption	W	225	325	325	225	325	325	350
Current draw	A	0.64	0.88		0.37	0.51		0.5
Max. back pressure	Pa	100	100	100	100	100	100	100
Max. back pressure	inH ₂ O	0.4	0.4	0.4	0.4	0.4	0.4	0.4
Min. ambient temperature	°C	-25	-25	-25	-25	-25	-25	-25
Max. ambient temperature	°C	85	55	55	85	55	55	55

ml = Max. load · me = Max. efficiency · fa = Free air · cs = Customer specification · ce = Customer equipment

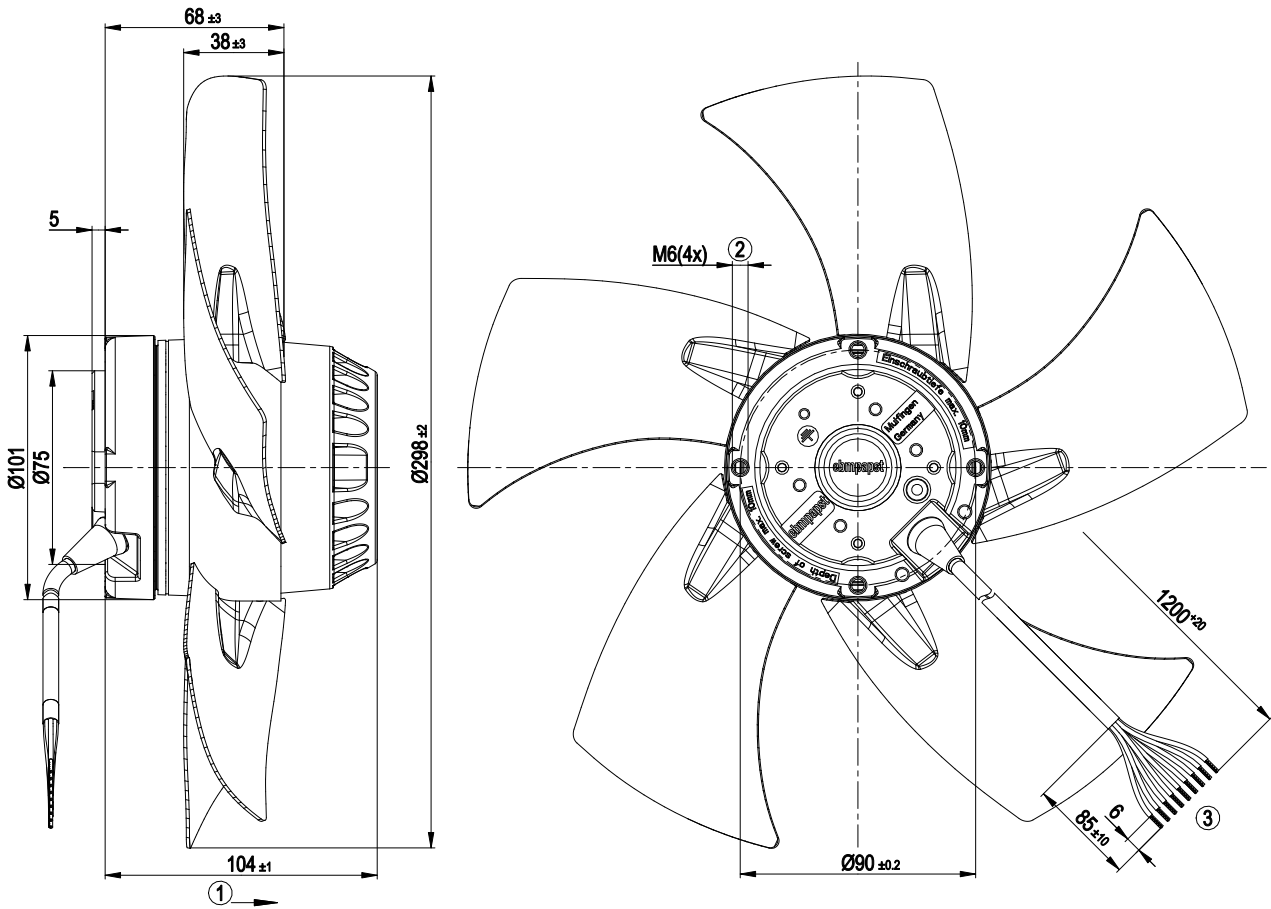
Subject to change



Technical description

Weight	3.2 kg
Fan size	300 mm
Rotor surface	Painted black
Blade material	Sheet steel, painted black
Number of blades	5
Airflow direction	"A"
Direction of rotation	Clockwise, viewed toward rotor
Degree of protection	IP44; installation- and position-dependent as per EN 60034-5
Insulation class	"F"
Moisture (F) / Environmental (H) protection class	F2-2
Max. permitted ambient temp. for motor (transport/storage)	+ 80 °C
Min. permitted ambient temp. for motor (transport/storage)	- 40 °C
Installation position	Shaft horizontal or rotor on bottom; rotor on top on request
Condensation drainage holes	On rotor side
Mode	S1
Motor bearing	Ball bearing
Touch current according to IEC 60990 (measuring circuit Fig. 4, TN system)	< 0.75 mA
Motor protection	Thermal overload protector (TOP) with basic insulation
With cable	Variable
Protection class	I (with customer connection of protective earth)
Conformity with standards	EN 60335-1
Approval	UL 1004-1; CSA C22.2 No. 100

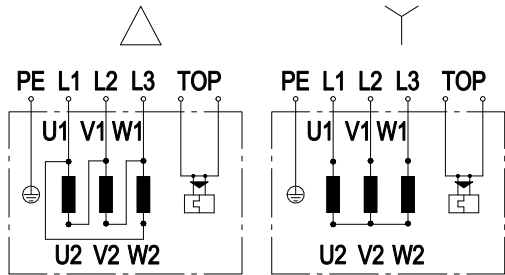
Product drawing



1	Direction of air flow "A"
2	Max. clearance for screw 10mm
3	Cable PFA 9G 0.5mm²; 9x crimped splices



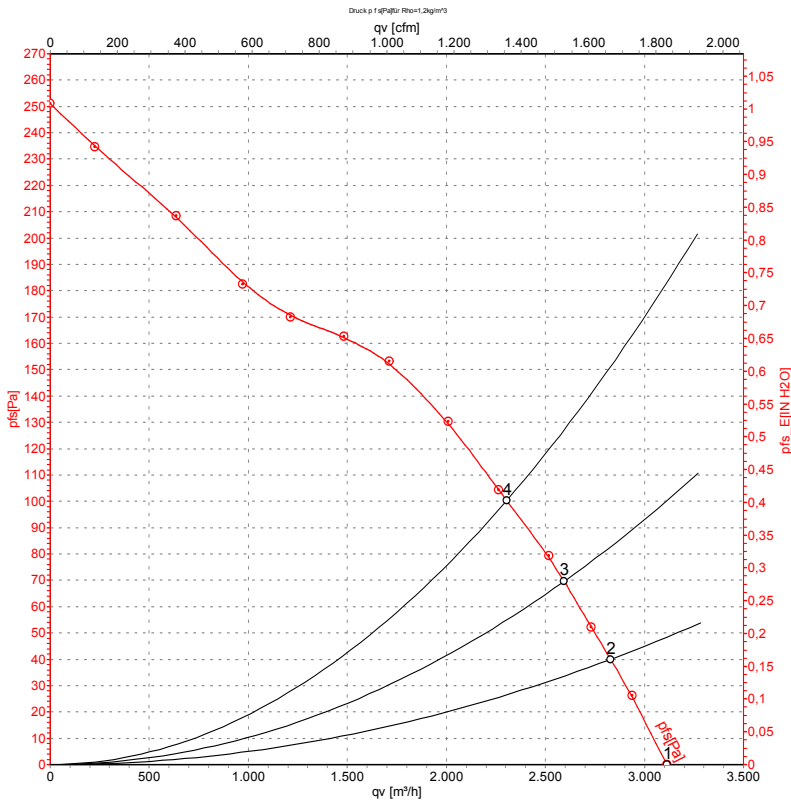
Connection diagram



Note: Change of rotation direction by reversing two phases

Δ	Delta connection	Y	Star connection	L1	black
L2	blue	L3	brown	U1	black
V1	blue	W1	brown	U2	green
V2	white	W2	yellow	TOP	2x gray
PE	green/yellow				

Curves: Air performance 50 Hz



Measurement: LU-42146-1

Air performance measured according to ISO 5801 installation category A. For detailed information on the measurement setup, contact ebmpapst. Intake sound level: Sound power level according to ISO 13347 / sound pressure level measured at 1 m distance from fan axis. The values given are valid under the specified measuring conditions and may vary due to conditions of installation. For deviations from the standard configuration, the parameters have to be checked on the installed unit.

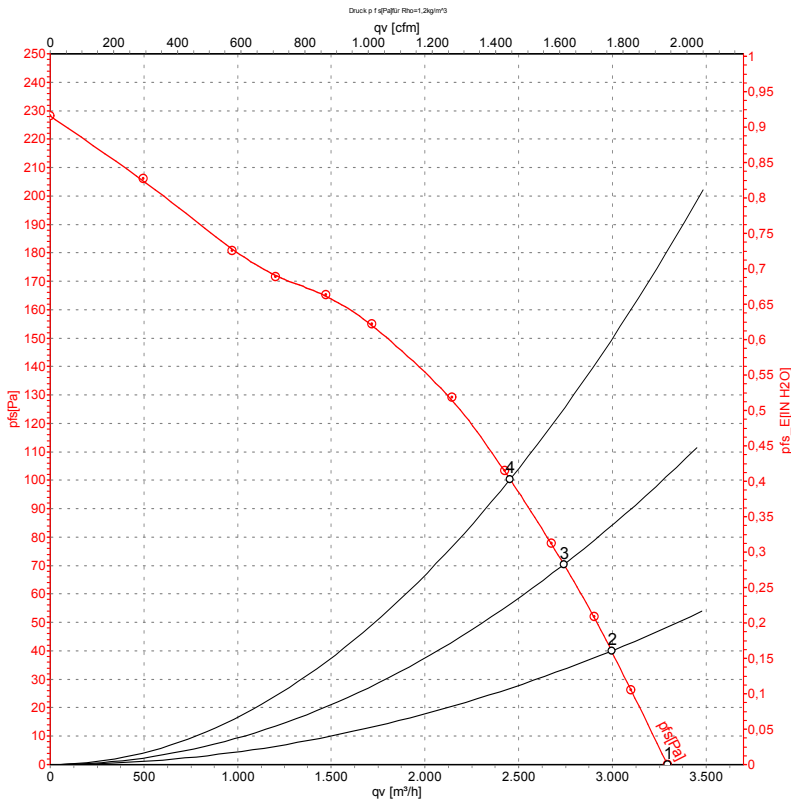
Measured values

	U	f	n	P _e	I	q _v	p _{fs}	q _v	p _{fs}
	V	Hz	min ⁻¹	W	A	m ³ /h	Pa	CFM	inH ₂ O
1	400	50	2500	225	0.37	3115	0	1830	0.00
2	400	50	2485	237	0.40	2830	40	1665	0.16
3	400	50	2460	246	0.41	2595	70	1525	0.28
4	400	50	2430	257	0.42	2305	100	1355	0.40

U = Power supply · f = Frequency · n = Speed (rpm) · P_e = Power consumption · I = Current draw · q_v = Air flow · p_{fs} = Pressure increase



Curves: Air performance 60 Hz



Measurement: LU-42169-1

Air performance measured according to ISO 5801 installation category A. For detailed information on the measurement setup, contact ebm-papst. Intake sound level: Sound power level according to ISO 13347 / sound pressure level measured at 1 m distance from fan axis. The values given are valid under the specified measuring conditions and may vary due to conditions of installation. For deviations from the standard configuration, the parameters have to be checked on the installed unit.

Measured values

	U	f	n	P _e	I	qv	p _{fs}	qv	p _{fs}
	V	Hz	min ⁻¹	W	A	m ³ /h	Pa	CFM	inH2O
1	400	60	2650	325	0.51	3295	0	1940	0.00
2	400	60	2595	334	0.54	2995	40	1765	0.16
3	400	60	2545	344	0.55	2740	70	1615	0.28
4	400	60	2500	353	0.57	2455	100	1445	0.40

U = Power supply · f = Frequency · n = Speed (rpm) · P_e = Power consumption · I = Current draw · qv = Air flow · p_{fs} = Pressure increase

